



# HART SIMMENTALS

## POWER BULL SALE

*Thursday, February 4, 2021 • 12:00 Noon at the farm 2 miles south of Frederick, SD*





## 46th Annual Hart Simmentals Power Bull Sale!

**WELCOME** to the great state of South Dakota – a place we hang our hat and kick off our boots at the end of a crazy, busy day and are now raising the 4th generation of Hart lineage and couldn't be more proud to welcome our newest herd sire – Greyson Luca Hart! He joined the team 6 weeks early on May 9th, 2020, and had to be away from us for a little while in Sioux Falls, (a place we are doing our darndest to forget) but happily made his way into the May birthday club by joining Kerry and Jaxon. Watch out when May comes as Kerry is going to be spouting off that it is the only month in the year that matters! Travis, Jamie and I will be disputing that statement!!!

2020 brought forth the most profound word that will never be forgotten – "TEAM"!!! Teams are found in every facet of every family, every business, and every industry in this great nation and it will be TEAM WORK that will move this country in the right direction. If we strive for positive thoughts and actions, we will be able to keep a way of life that is second to none and has been the only life we have ever lived. We enjoy every one of God's

creations in our beautiful country and our greatest gifts are our children, grandchildren and our cattle – all of our pride and joy!!!

Our excitement cannot be contained and we are bursting out of the seams with such pride at these babies that grace the ground here. Our offering is the best ever assembled in our over 46 years! Our dynasty showcases all of our back breaking efforts that utilizes the latest technologies that help provide you a product with the highest accuracies in THE, CHR, calf crop genomics, and being the very first seedstock producers in an 8 state perimeter to have a female herd with every animal being tested with genomic enhanced EPDs and the very first all video auction with no animals being put through an arena – scary but very necessary and has been the best advancement and we continue to adapt our program in the direction of our technological times!

We love to hear your success stories where your achievements were prosperous using our genetics. We are so very honored to have our genetics impacting thousands of herds over

the past 46 years. With restrictions and safety measures being placed, it is pretty tough to be in the business that we are in without the social interactions. We urge you all to take advantage in the one place that is the safest known – the all online auction, but do welcome all visitors here and we certainly provide you with the proper face attire when you come to inspect and analyze our entire herd at your disposal!!

In closing, our family cannot thank you all enough for your prayers, cards, gift cards, flowers, care packages, phone calls and visits. Even if you couldn't get to see Kerry, I read every card, every snapchat, every text message, told him who all came to support us, even though he couldn't technically hear me - I assure you - he did. It all brought such light back to us. Especially when we got to bring him home just a few days before the sale. Even though we couldn't be out with you all, we watched with pure green envy as we watched from the living room window as you all drove into the farm yard and were so overwhelmed and overjoyed to see so many of our friends, neighbors

and patrons that came to support the boys and Kerry and !!!! We will be here for our 2021 sale. If not to just pop in for a short stay. Thank you all for your love and support!

**SEE YOU ON THE 4TH!**

Sincerely,

**The Hart Family: Kerry & Mara  
Justin, Jes, Braelyn, Zoie, Jaxon  
Travis, Shelby and Greyson  
Jamie & Brandon**



JACOB  
HOLZER,  
Ranch  
Foreman



# 46th Annual Bull Sale

**Thursday, February 4, 2021 at 12:00 Noon**

Sale will be held at the farm 2 miles south of Frederick, SD  
**VIDEO SALE ONLY - bulls will be penned for viewing  
 at the farm prior to and on sale day!**

**ONE OF THE COUNTRY'S LARGEST SELECTIONS OF PUREBRED BULLS!  
 96% OF OFFERING IS HOMOZYGOUS POLLED!**

**Selling 87 PB SM Herd Bull Prospects**

*Complete performance data & 50K testing  
 on all bulls offered in the 2021 sale.*

**+ 5 Elite Open Heifers – New for 2021!**

## Sale Day Phones:

**Kerry 605-252-2065 • Val 612-805-7405**

**Justin 605-216-6469 • Travis 605-252-0894**

### SCHEDULE:

**Wednesday, February 3rd.** ..... Viewing of Sale Cattle at the Farm  
 Farm address: 10904 387th Avenue, Frederick, SD 57441

**Thursday, February 4th**

8:00 a.m. .... Viewing of Cattle

11:00 a.m. .... Complimentary Lunch

12:00 Noon. .... **46th Annual Hart Simmentals Power Bull Sale**

**AIR TRANSPORTATION:** Delta Airlines serves Aberdeen from all directions.

Please contact Hart Simmentals prior to sale day for assistance with transportation.

**AREA MOTELS:** Aberdeen, S.D. has several excellent motels

Ramkota Inn, Sale Headquarters ..... 605-229-4040

Hampton Inn, Aberdeen SD ..... 605-262-2600

Holiday Inn Express & Suites ..... 605-725-4000

Harvest Inn, Ellendale, ND (12 miles north of ranch) ..... 701-349-2467

### LIVESTOCK PRESS REPRESENTATIVES &

### MARKETING REPRESENTATIVES:

Val Eberspacher, EE Sales ..... 612-805-7405

Kent Jaecke ..... 405-408-2440

Chris Beutler, Lee Agri-Media ..... 402-380-8244

Daniel Weidenback, ASA Representative ..... 605-870-0576

Russ Danielson, ASA Representative ..... 701-391-7830

### AUCTIONEER:

Col. Jared Shipman ..... 806-983-7226

**FREE DELIVERY ANYWHERE ON ALL BULLS  
 PURCHASED OVER \$5,000!**

*Delivery starting February 20th. Or, we can keep the bulls until April 30 and the buyer  
 will be responsible for pick up. \$50 off per head if you haul your bull sale day.*

This sale will be  
 broadcast live  
 on the internet!

**DVAuction**  
 Broadcasting Real-Time Auctions

**For more information on online  
 bidding, Justin Dikoff 605-290-0635**

★ **HART SIMMENTALS** ★

Kerry, Mara, Justin, Jes, Travis, Shelby & Jamie  
 4hooves@nvc.net • Kerry 605-252-2065

**JUSTIN 605-216-6469 • TRAVIS 605-252-0894**

## General Information

**Health:** We at Hart Simmental have a complete herd health program which is managed by Dr. Tim Kruse and the Wetonka Vet Clinic. All bulls will be accompanied by health papers for shipment anywhere in the United States. They have been vaccinated for Rednose, P13, BVD, 7-way clostridial, Blackleg, BRSV, Haemophilus, and have had their booster shot at weaning. They have also been dewormed with Safeguard and poured with Ivomec. Dams of all bulls have been tested John's free.

**Genetic Defects:** All bulls selling are Arthrogryposis Multiplex (AM) Free, Neuropathic Hydrocephalus (NH) Free, and Contractural Arachnodyctyly (CA) Free.

**Delivery:** FREE DELIVERY anywhere on bulls purchased over \$5,000. We will start delivery February 20 or we can keep the bulls until April 30. Any bull left here until April 30 must be picked up by the purchaser by that date. No exceptions. \$50 off per head if you haul your bull sale day.

**Performance Information:** All performance information will be posted on sale day for your inspection. Yearling Weights and Weight Per Day of Age will be available on all bulls selling sale day, and will be posted on the internet sale site as soon as complete.

**Volume Discount:** There will be a volume discount given if you purchase 3 bulls, the discount will be 3%. 4 bulls will have a 4% discount and 5 or more bulls will be a 5% discount.

**Livestock Insurance:** Insurance will be available sale day through Martin-Trudeau Insurance who offers loss of use and mortality. In no case will seller be responsible for more than the purchase price of the bull and details will be available through the agents on sale day. *If you intend on leaving your bulls at the ranch we highly recommend you insure your bull or bulls to better protect your investment.*

**EPDs:** Please note the EPDs may change from the time the sale catalog is printed until registration paper is transferred. Simmental EPDs are BOLT 12-22-20 numbers.

*All bulls have been tested for Genomic Enhanced EPDs.*

**Announcements:** Announcements made sale day and from the auction block during the sale take precedence over printed material in the catalog or other printed material associated with this sale.

### Sale Terms & Conditions:

- 1) All cattle will sell under the terms and conditions adopted by the American Simmental Association.
- 2) We guarantee our cattle to be breeders but reserve the right to test any animal that may be returned to us as a non-breeder for one hundred eighty (180) days before making an adjustment. Cattle will be returned at the buyer's expense, and if declared a sound breeder by a competent veterinarian the cattle will be returned to the buyer's ranch at the buyer's expense. In case an adjustment is required, we will provide you with a satisfactory replacement (if available) or issue you a credit equal to the bull's purchase price minus the salvage value of \$1,000.
- 3) Any death or injury after the animal is sold is at the buyer's risk.
- 4) Anyone attending this sale attends at their own risk. The Hart's or any of the sale force will not be held responsible for any personal injury while attending this sale.

Sale Managed by:

*Eberspacher*  
 ENTERPRISES INC.

Val & Lori Eberspacher  
 Office 507-532-6694  
 Cell 612-805-7405  
 sales@ebersale.com

**Follow our Facebook page for sale updates!**



## Sons of Hart State Of War 056C

**Black Homozygous Polled Purebred** ASA#2975543 Tattoo: 056C Birth: 2-21-15

**Welsh's Warsaw 312Z x Hart Miss 102A**

EPDs																
CE	BW	WW	YW	ADG	MCE	MM	MWW	STAY	DOC	CWT	YG	MARB	BF	REA	API	TI
18	-1.3	87	133	.29	10	32	75	20	10.8	43.8	-.36	-.01	-.093	.85	147	85

In just three calf crops, State Of War 056C (a Warsaw son) has turned himself into the #1 leading calving ease herd sire as lead off bull for Semex. He was very heavily used in hundreds of programs throughout the United States and in Canada in 2020. He was purchased in our 2016 bull sale selling to McMillen Ranching LTD and Semex making his track record one of the hottest on trends. His sons are well known for their distinctive bulletproof presence, high yielding body shapes that can really lay on the extra muscle and his daughters are ultra-fancy and elegant with a tremendous maternal look and personifies what quality is all about.



## Hart Whiplash 096H

**Black DbL. Polled Purebred** ASA#3727367 Tattoo: 096H Birth: 2-9-20

Act. BW: 78 Adj. WW: 859 WW Ratio: 110

EPDs																
CE	BW	WW	YW	ADG	MCE	MM	MWW	STAY	DOC	CWT	YG	MARB	BF	REA	API	TI
13	1.2	92	135	.27	8	37	83	19	11.9	43.6	-.39	-.03	-.091	.96	135	84
Rank																
20		10	15	25	20	1	1	20		10				30	35	20

Hart State Of War 056C Welsh's Warsaw 312Z

Hart Miss 102A

Hart Miss 155A WLB Roughneck 366R 377W

Hart Miss Club King W585



Hart Powerhouse 074G, Maternal Brother



Hart Double Shot 096E, Maternal Brother



### • Dam Ratios: BW 6@100, WW 6@112 & YW 4@106

Impeccable is just one word that instantly jumps into your head when evaluating this dynamic STATE OF WAR eye popping son. State Of War propelled himself to the top and has become the #1 CE herd sire in the Semex line-up and was very heavily used in 2020. The demand for semen for 2021 is looking extremely impressive! He displays a tremendous calving ease to yearling weight spread that factors into some amazing individuals hitting the ground running. His Roughneck/Club King dam has herself an impressive leader board with sons HART POWERHOUSE 074G and HART DOUBLE SHOT 096E as top selling herd bulls in our previous sales. Whiplash has incredible depth from tip to tail and has a super smooth muscle pattern to his streamline shoulders that transitions into a belly dropping, deep barreled rib section and is complimented by his huge hind quarter and extra-large testicular development. He stands on 4 very large hooves which helps support his massive build and tremendous power. He will unquestionably be a sale feature that won't be hard to find come sale day – just look for the crowd of bystanders!





LOT  
2

## Hart War Admiral 069H

**Black Homozygous Polled Purebred**

ASA#3727348 Tattoo: 069H Birth: 2-7-20  
Act. BW: 78 Adj. WW: 782 WW Ratio: 100

*Homozygous Polled*

EPDs															
CE	BW	WW	YW	ADG	MCE	MM	MWW	STAY	DOC	CWT	YG	MARB	BF	REA	API
15	.4	93	147	.33	8	24	71	17	12.4	46.1	-.45	.04	-.108	1.02	142
Rank															
10	25	5	3	4	20		15	35	35	5			20	20	10

Hart State Of War 056C Welsh's Warsaw 312Z

Hart Miss 102A

Hart Miss 137D

GLS Integrate Z3

Hart Miss X179

### • HEIFER BULL CANDIDATE

This State Of War herd bull prospect is a unique combination with his top calving ease profiling and a huge growth matrix of Integrate who definitely needs no introduction to the Simmental industry and was a formidable staple used for many years in our program and many others and has sired a huge number of top selling herd bulls in our past sales. Though he was not able to provide personal services to his many lady friends here, he graced these hallowed pastures until his passing! War Admiral sits so uniformly on all 4 large hooves and extends deeply with added length which supports his actual weaning weight of 862 lbs. His attractive eye appeal grabs your attention and focuses on a mighty big center, extensive hind quarter and substantial extra-large set of testicles. He combines all of the right pieces and parts to be a super standout herd sire in any progressive seedstock supplier or commercial operation and will compliment any marketing avenue.



Hart Miss 102A, Grandam



Hart Fury 373F



Hart Burlington 087E



Hart Iron Warrior 057C

THREE SONS OF GLS INTEGRATE Z3



LOT  
3**Hart War Party 088H****Black Homozygous Polled Purebred**ASA#3727594 Tattoo: 088H Birth: 2-9-20  
Act. BW: 78 Adj. WW: 801 WW Ratio: 102*Homozygous Polled*

EPDs																
CE	BW	WW	YW	ADG	MCE	MM	MWW	STAY	DOC	CWT	YG	MARB	BF	REA	API	TI
13	1.1	82	130	.30	7	33	74	20	10.7	41.2	-.42	.11	-.099	.94	143	82
Rank																
25		30	20	15	30	4	10	10		15				35	20	25



Welsh's Warsaw 312Z  
Hart State Of War 056C  
Hart Miss 102A  
CDI Made Right 353B  
Hart Miss 398D  
Hart Miss 102A

**• Dam Ratios: WW 3@103**

We can't stress enough about State Of War's proven calving ease prowess and the high caliber degree that he stamps into his offspring and bringing to the plate. They are tremendously equipped with significant standards as State Of War continues to gain momentum and immense popularity as he moves to the #1 in CE traits which is no surprise to the breeding world that have already sampled his genetics. War Party's class, style, natural presence and overall dimension is what definably gives him a slight gain against others in his group. You can't help but notice how they all have the extra bells and whistles making them a hot commodity and surely should be on your short list!

LOT  
4**Hart Show Time 033H****Black Homozygous Polled Purebred**ASA#3727196 Tattoo: 033H Birth: 1-31-20  
Act. BW: 67 Adj. WW: 820 WW Ratio: 105*Homozygous Polled*

EPDs																
CE	BW	WW	YW	ADG	MCE	MM	MWW	STAY	DOC	CWT	YG	MARB	BF	REA	API	TI
16	-1.9	85	122	.23	9	29	71	17	9.8	31.8	-.34	.09	-.087	.69	144	86
Rank																
4	4	20	30		10	15	15								20	15



Welsh's Warsaw 312Z  
Hart State Of War 056C  
Hart Miss 102A  
W/C Executive Order 8543B  
Hart Miss 014D  
Hart Lady Contender T227

**• Dam Ratios: WW 3@100****• Heifer Bull Candidate**

SHOW TIME is a stunning standout calving ease bull that is in the top 3% for CE and the top 4% for Birth Weight that combines top notch growth numbers that surely grabs your attention. As you witness his sharp flare and flashy composure in person, he undeniably catches your attention and makes it pretty hard to see past him to the other lots! He is blessed with abundant power and easily has maintained his sleek, smooth super long skeleton, and predominate extra muscle mass from the first day he hit the ground. Calving season can be a long grueling-sometimes ardent 4 month process for some producers, let us help make your season as stress free as possible by putting this amazing heifer bull prospect into production and get a little more sleep at nights!

Hart Miss 102A, Grandam







## Hart 045H

Black Homozygous Polled Purebred

ASA#3727579 Tattoo: 045H Birth: 2-1-20

Act. BW: 69 Adj. WW: 777 WW Ratio: N/A

Homozygous Polled

EPDs																
CE	BW	WW	YW	ADG	MCE	MM	MWW	STAY	DOC	CWT	YG	MARB	BF	REA	API	TI
13	-3	72	112	.25	7	33	70	18	9.7	37.6	-.40	.09	-.099	.85	135	77
Rank																
30	15				35	3	15	30		20					35	

Hart State Of War 056C    Welsh's Warsaw 312Z  
 Hart Miss 102A  
 Hart Miss X377        BF L112 Trailblazer  
                              Hart Miss Perfector T244

• Dam Ratios: BW 9@100

• HEIFER BULL CANDIDATE

This Trailblazer/State Of War son is going to be another heifer bull recommendation that will set the standards for structural integrity, body shape, very clean smooth muscled shoulders and impeccable balance from side to side and front to back. He presents unlimited mating flexibilities for any program in the Americas – no Sheer Force or Dream On in his pedigree.



## Hart Head Of State 059H

Black Homozygous Polled Purebred

ASA#3727532 Tattoo: 059H Birth: 2-3-20

Act. BW: 74 Adj. WW: 804 WW Ratio: 103

Homozygous Polled

EPDs																
CE	BW	WW	YW	ADG	MCE	MM	MWW	STAY	DOC	CWT	YG	MARB	BF	REA	API	TI
13	.7	90	137	.29	8	30	75	22	11.3	38.4	-.45	-.08	-.096	1.02	140	83
Rank																
20	30	10	10	15	15	10	5	2		20				20	25	25

Welsh's Warsaw 312Z  
 Hart State Of War 056C  
 Hart Miss 102A  
 BBS True Justice B10  
 Hart Miss 320E  
 Hart Miss 551Z

• Dam Ratios: WW 2@108

• HEIFER BULL CANDIDATE

This is a heifer model deluxe and we just can't find a hole in this ultra-impressive, stacked EPD profile – from the unique blending of State Of War and True Justice – both #1's in their own right at Semex and Genex slots for calving ease. Head Of State brings extensive dense body dimension to the table and balances his stoutness, radical skeletal quality and capacity plus he by far levels the playing field in all categories to make the exclusive heifer package that has some of the flashiest qualities to command and propel him to top of the totem pole!



LOT  
7

Hart 076H

Black Homozygous Polled Purebred

ASA#3727461 Tattoo: 076H Birth: 2-8-20  
Act. BW: 74 Adj. WW: 751 VVW Ratio: N/A

Homozygous Polled

EPDs															
CE	BW	WW	YW	ADG	MCE	MM	MWW	STAY	DOC	CWT	YG	MARB	BF	REA	API
14	.5	83	119	.22	8	31	73	22	12.0	30.7	-.42	.00	-.104	.78	142
Rank															
15	25	25			15	10	10	2					20		35



Welsh's Warsaw 312Z  
Hart State Of War 056C  
Hart M iss 102A  
BBS True Justice B10  
Hart Miss 234E  
Hart Cracker Barrel Lass

#### • HEIFER BULL CANDIDATE

We have taken all of the guess work out for you on these State Of War heifer herd sire prospects and you are left with only one decision as to which one of these highly credentialed stud bulls will you build your dynasty around! 076H offers that exceptional silhouette and presence with his form plus uniform function needed to make an impact giving you more added value to your bottom line.

LOT  
8

Hart 080H

Black Homozygous Polled Purebred

ASA#3727511 Tattoo: 080H Birth: 2-9-20  
Act. BW: 65 Adj. WW: 854 VVW Ratio: 109

Homozygous Polled

EPDs															
CE	BW	WW	YW	ADG	MCE	MM	MWW	STAY	DOC	CWT	YG	MARB	BF	REA	API
14	-.6	85	129	.27	9	33	76	21	11.9	48.6	-.42	-.01	-.098	1.05	144
Rank															
15	15	20	20	25	10	3	4	4		4				20	25

Hart State Of War 056C Welsh's Warsaw 312Z  
Hart Miss 102A  
Hart Miss 297E WCS El Dorado 5209C  
Hart Miss 362Y

- Dam Ratios: WW 2@103
- HEIFER BULL CANDIDATE

In our experimentation of matings for State Of War which started in 2019 with his first bulls to grace our catalog, we have found he matches up with any and all challenges we placed before him and reaffirmed our conclusion that he was going to be something pretty special. Hart 080H is the only pairing of State Of War and El Dorado which makes him a one-of-a-kind deluxe heifer bull contender that has a look that is a nod to his mother who threw her hat into the ring with this whopper heifer bull. 080H is blessed with his fair share of abundant power but still maintains a cultured streamline physique from nose to tail.

War and El Dorado which makes him a one-of-a-kind deluxe heifer bull contender that has a look that is a nod to his mother who threw her hat into the ring with this whopper heifer bull. 080H is blessed with his fair share of abundant power but still maintains a cultured streamline physique from nose to tail.



SVF Z47 Patch

LOT  
9

Hart 087H

Black Homozygous Polled Purebred

ASA#3727505 Tattoo: 087H Birth: 2-9-20  
Act. BW: 80 Adj. WW: 820 VVW Ratio: 105

Homozygous Polled

EPDs															
CE	BW	WW	YW	ADG	MCE	MM	MWW	STAY	DOC	CWT	YG	MARB	BF	REA	API
11	2.9	93	144	.32	6	29	75	19	9.2	44.2	-.38	-.01	-.094	.91	131
Rank															
		10	5	10		15	5	20		10					25

Hart State Of War 056C Welsh's Warsaw 312Z  
Hart Miss 102A  
Hart Miss 284E SVF Z47 Patch  
Hart Miss New Design S50

#### • Dam Ratios: WW 2@105

SVF Z47 PATCH was a powerhouse staple in our herd battery that sired extremely fleshy sons and daughters with some extra zing in their baldy patterns that captivated even the most skeptical eye and met with much approval rantings! Not only does 087H represent that high EPD profile but that huge growth spread and massive frame size noted from Patch which equals up to that built for the long haul factor.





## Hart Penalty Box 114H

**Black Dbl. Polled Purebred**

ASA#3727671 Tattoo: 114H Birth: 2-12-20  
Act. BW: 85 Adj. WW: 858 WW Ratio: 111

Welsh's Warsaw 312Z  
Hart State Of War 056C  
Hart Miss 102A  
WLB Roughneck 366R 377W  
Hart Miss 696Y  
Hart Ms. Royalflush U52Z

• **Dam Ratios: BW 8@100,  
WW 8@108 & YW 6@105**

One thing is for certain; you won't find yourself in the penalty box for using any one of these State Of War sons! Hart Most Wanted 083G is a maternal brother to Penalty Box and is another one of those individuals that is making a lasting impression in the minds of the breeders that have seen him from early on. Our Roughneck dams keep rising to the top just like cream and you know the product of cream is "CHEDDAR"!!! Penalty Box's expectations are right on the money as he boasts tons of style points and is a total eye turner with his extensive muscle dimension and definition and actual weaning weight of 945. He has incredible body shape in every direction and checks every single box on the sheet and will surely be a sale highlight.



Harts Most Wanted 083G,  
Maternal Brother



EPDs															
CE	BW	WW	YW	ADG	MCE	MM	MWW	STAY	DOC	CWT	YG	MARB	BF	REA	API
10	2.6	95	140	.28	6	34	81	19	8.2	44.3	-.38	-.09	-.086	.98	128
Rank															
		3	10	20		3	1	15		10				30	25



## Hart 109H

**Black Homozygous Polled Purebred**

ASA#3727340 Tattoo: 109H Birth: 2-10-20  
Act. BW: 69 Adj. WW: 813 WW Ratio: 104

*Homozygous Polled*

Hart State Of War 056C Welsh's Warsaw 312Z  
Hart Miss 102A  
Hart Miss 132E HL Rebel 435C  
Hart Miss 077Z

• **Dam Ratios: WW 2@107**  
• **HEIFER BULL CANDIDATE**

As State Of War continues to amass his deserving accolades which has proven that his calving ease statistics are no joke and certainly the real deal – it's moved him to #1 in the industry in that coveted category. We present another different mating with HL Rebel 435C under his dam's side but still staying predominately as a calving ease phenom as 109H brings consistency you can measure against his mates which will not make your selection from them an easy decision. But rest assured, you will have a fantastic finished product in the end that will lead to fruitful assets.

EPDs															
CE	BW	WW	YW	ADG	MCE	MM	MWW	STAY	DOC	CWT	YG	MARB	BF	REA	API
13	-.9	81	118	.23	8	33	73	19	11.9	37.3	-.34	.12	-.076	.83	143
Rank															
		20	10	35		20	3	10	20	25					20



## Hart 103H

**Black Homozygous Polled Purebred**

ASA#3727256 Tattoo: 103H Birth: 2-10-20  
Act. BW: 71 Adj. WW: 784 WW Ratio: N/A

*Homozygous Polled*

EPDs															
CE	BW	WW	YW	ADG	MCE	MM	MWW	STAY	DOC	CWT	YG	MARB	BF	REA	API
15	-.2	85	127	.26	8	24	67	19	7.9	35.3	-.44	-.13	-.099	.93	134
Rank															
		10	20	20	35	20	25	15		30					35

Hart State Of War 056C Welsh's Warsaw 312Z  
Hart Miss 102A  
Hart Miss 060C JF Made In America 210Z  
Hart Lady In Time W057

• **HEIFER BULL CANDIDATE**

An end of February State Of War son that portrays many of the same meritable characteristics that has attracted so many breeders out to the ranch for evaluations. 103H has inherited his sire's superior structure – that belly dragging deep middle that converges into that massive hind quarter. Another heifer bull prospect that will work on about most anything you can throw at him.





LOT  
13**Hart 118H****Black Homozygous Polled Purebred**ASA#3727308 Tattoo: 118H Birth: 2-13-20  
Act. BW: 71 Adj. WW: 788 WW Ratio: 101**Homozygous Polled**

EPDs															
CE	BW	WW	YW	ADG	MCE	MM	MWW	STAY	DOC	CWT	YG	MARB	BF	REA	API
16	.1	84	132	.30	9	30	72	17	13.0	49.8	-.33	.16	-.089	.87	147
Rank															
4	20	25	15	15	10	10	10		25	3					15



Welsh's Warsaw 312Z  
Hart State Of War 056C  
Hart Miss 102A  
JBS Single Shot 601C  
Hart Miss 109E  
Hart Miss 182Y

**• HEIFER BULL CANDIDATE**

Sit up and take notice of this State Of War and Single Shot! Hot shot, big time calving ease prospect. This is a pretty young Single Shot female that has a picture perfect udder and exhibits very strong maternal greatness as she presented a standout Eclipse son in her first year of production and sold at our sale last year to Steve Stoddard. 118H is ideal in his length, carriage depth, hind quarter production that sets up squarely on 4 very large hooves and is the typically greatness that is State Of War's calling card and exceeds our expectations with his every calf crop.

LOT  
14**Hart 121H****Black Dbl. Polled Purebred**ASA#3727411 Tattoo: 121H Birth: 2-14-20  
Act. BW: 85 Adj. WW: 765 WW Ratio: 100

EPDs															
CE	BW	WW	YW	ADG	MCE	MM	MWW	STAY	DOC	CWT	YG	MARB	BF	REA	API
11	2.4	89	134	.28	7	27	71	20	10.2	38.3	-.40	.05	-.098	.85	136
Rank															
		10	15	20	35	25	15	15		20					30



Welsh's Warsaw 312Z  
Hart State Of War 056C  
Hart Miss 102A  
SVF Z47 Patch  
Hart Miss 192D  
Hart Miss 399Z

**• Dam Ratios: BW 3@104**

Here is the second Patch young female that is surely putting up some impressive potential with her own State Of War son that equally sets up on a well-shaped foundation comprised of massive bone structure, large deep barreled middle section with plenty of goods to make the type of functional cattle needed in every facet of the cattle industry.



LOT  
15

**Hart 133H**

**Black Homozygous Polled Purebred**

ASA#3727310 Tattoo: 133H Birth: 2-16-20  
Act. BW: 83 Adj. WW: 806 WW Ratio: 103

*Homozygous Polled*

EPDs																
CE	BW	WW	YW	ADG	MCE	MM	MWW	STAY	DOC	CWT	YG	MARB	BF	REA	API	TI
12	1.7	90	134	.27	6	26	71	17	11.1	40.3	-.43	-.06	-.095	.98	127	81
Rank																
35		10	15	25		30	10			15				30		30

Welsh's Warsaw 312Z  
Hart State Of War 056C  
Hart Miss 102A  
ES Ridgerider YW3  
Hart Mis 110D  
Hart Miss X753

By combining pieces and parts from two top calving ease dynamite duos, we have generated a bull that offers the trademark look of State Of War with the presence of Ridgerider – who equaled any herd sires in the calving ease division. This complete outcross confirms and blesses us with another prime example of the many different avenues you may travel and have that same cloned thickness, progression of depth throughout, smooth clean lines and sleek shoulders that carries that patented State Of War look.



LOT  
16

**Hart 140H**

**Black Homozygous Polled Purebred**

ASA#3727593 Tattoo: 140H Birth: 2-17-20  
Act. BW: 80 Adj. WW: 845 WW Ratio: 108

*Homozygous Polled*

EPDs																
CE	BW	WW	YW	ADG	MCE	MM	MWW	STAY	DOC	CWT	YG	MARB	BF	REA	API	TI
14	1.3	92	142	.32	8	31	77	19	11.6	41.1	-.41	.11	-.098	.91	146	88
Rank																
15		10	5	10	20	10	3	15		15					15	10

Welsh's Warsaw 312Z  
Hart State Of War 056C  
Hart Miss 102A  
BBS True Justice B10  
Hart Miss 396E  
Hart Miss 207Z

• **Dam Ratios: BW 2@102 & WW 2@106**

When you study this dense group of State Of War son, you will quickly notice that by ranking the number 1 bull to the number 20 bull the degree of difference in them is not very much in terms of the mass, frame and textbook hip and hind leg structure. The difference is how they are paired in the cow selection. Our females must perform to very stringent criteria or simply put, you fail to meet our expectation then you fail our program and are eliminated and when you have 700 beauties with our breed yearlings, you learn very quickly what will work and what doesn't. 140H's True Justice background should explain easily tells you that this is a bull that is backed by some excellent power yet should have some moderate birth weights. He exemplifies all of the fundamentals to be a major league contender.





LOT  
17

Hart 142H

Black Homozygous Polled Purebred

ASA#3727423 Tattoo: 142H Birth: 2-17-20  
Act. BW: 76 Adj. WW: 771 WW Ratio: N/A

Homozygous Polled

EPDs																	
CE	BW	WW	YW	ADG	MCE	MM	MWW	STAY	DOC	CWT	YG	MARB	BF	REA	API	TI	
13	.6	79	119	.24	7	27	67	20	10.4	34.1	-.32	.00	-.080	.69	135	77	
Rank																	
20	30				25	25	25	10		35						35	



Welsh's Warsaw 312Z  
Hart State Of War 056C  
Hart Miss 102A  
SVF Z47 Patch  
Hart Miss 200D  
Hart Miss X682

• **HEIFER BULL CANDIDATE**  
Patch and State Of War made another grand slam in this heifer bull candidate that still brings to the surface an individual that stacks up very nicely to his contemporary grouping with his long smooth muscle pattern and competent build. As you try to find a hole in this spectacular specimen in person, his added length, depth, and massive hind muscle definition (not sure if I spelled that right) hind quarter only enhances 142H a true show stopper!



RS&amp;T American Girl 1Y, Dam

LOT  
18

Hart 259H

Black Homozygous Polled Purebred

ASA#(3727175) Tattoo: 259H Birth: 3-13-20  
Act. BW: 78 ET Twin Adj. WW: 793 WW Ratio: N/A

Homozygous Polled

LOT  
19

Hart 277H

Black Homozygous Polled Purebred

ASA#(3727173) Tattoo: 277H Birth: 3-15-20  
Act. BW: 74 ET Twin Adj. WW: 816 WW Ratio: N/A

Homozygous Polled

EPDs																	
CE	BW	WW	YW	ADG	MCE	MM	MWW	STAY	DOC	CWT	YG	MARB	BF	REA	API	TI	
14	.1	78	116	.24	8	28	66	19	11.9	32.9	-.40	-.02	-.098	.78	133	77	
Rank																	
15	20				20	20	30	20		35						35	

## Pedigree for Lots 18-19:

Hart State Of War 056C Welsh's Warsaw 312Z  
Hart Miss 102A  
RS&T American Girl 1Y FBFS Vantage Point 021S  
JDJ Rich And Rare 12S

- **Dam Natural Ratios: WW 2@111**
- **BOTH HEIFER BULL CANDIDATES**

This duo of full sibs offers boundless and endless opportunities to acquire some of the industry's elite calving ease genetics. These boys are such a tip of the hat compliment to their top tier lineage that is found throughout our entire program. They are extremely sound built and carry themselves squarely on 4 very large hooves leading into some tremendous shape from end to end and an excellent progression of depth, that comes from both sire and dam which in turn increases high efficiency and easy fleshing quality that is the key to aid any and all purebred and commercial programs.



Hart Miss 102A, Grandam



Hart Bourbon 100F, Maternal Brother



## Sons of HPF Right To Love 365D "CHOLO"

**Black Polled Purebred** ASA#3124163 Tattoo: 365D Birth: 1-1-16

**HTP/SVF Duracell T52 x RP/MP Right To Love 015U**

EPDs																
CE	BW	WW	YW	ADG	MCE	MM	MWW	STAY	DOC	CWT	YG	MARB	BF	REA	API	TI
16	.2	81	113	.20	9	20	60	12	6.1	27.6	-.49	.28	-.094	1.05	138	85

This is the 3rd full embryo brother to HPF QUANTUM LEAP Z952 and THSF LOVER BOY B33 out of the amazing RP/MP RIGHT TO LOVE 015U dam that we purchased at the 2019 "The One" sale at the NWSS. He came off a high in the show circuit being named the Senior Champion at the NAILE. He has that perfect amount of white on his neatly patterned face and his first babies really brought the flash! His EPDs and growth numbers are a great indicator that there are big things on the horizon for Cholo and he brings you an opportunity to acquire the next genetics in the famous family.



## Hart Hog Wild 285H

**Black Baldy Dbl. Polled Purebred** ASA#3727295 Tattoo: 285H  
Birth: 3-16-20 Act. BW: 78 Adj. WW: 782 WW Ratio: 100

EPDs																
CE	BW	WW	YW	ADG	MCE	MM	MWW	STAY	DOC	CWT	YG	MARB	BF	REA	API	TI
14	1.0	78	117	.25	8	24	63	12	9.6	30.1	-.47	.08	-.109	.89	124	79
Rank	15	35			15						30		20			

HPF Right To Love 365D HTP/SVF Duracell T52  
RP/MP Right To Love 015U  
Hart Miss 098C GLS Integrate Z3  
Hart Miss Limit Up S195



Hart Line Man  
350G, Maternal  
Brother



Hart Fury 343F,  
Maternal Brother



Hart Prime 017E,  
Maternal Brother

Hart Miss 098C, Dam



### • Dam Ratios: BW 5@105, WW 5@112 & YW 4@107

There is no need to refresh anyone's memories when mentioning Integrate and how he moved our whole program into the next realm and how much we regarded him. His legacy lives on in many of our dams and in the bulls that we have sold in many numerous sales that have gone onto over 500 other programs making great impacts. There wouldn't be enough room in the catalog to mention every one of his feats, but a lady that matches his extreme talent and exceptional in her own right is Hart Miss 098C and she has fought her way to the top on our books with some of our other very prolific dams. Hart Prime 017E was her first trophy and following him came Hart Fury 343F, Hart Line Man 350G and last but not least Hart Hog Wild 285C. As you can judge from her photo, her udder is perfectly placed with just the right size of teat, there is no stopping her prowess! Hog Wild is just a clone of Integrate himself but with so much panache and that flashy chrome on his perfect head which ties his whole look together seamlessly from end to end. He is as wide as a truck and as deep as an ocean with massive testicular development with 4 very large hooves, he undeniably has it all!



LOT  
21

Hart 084H

Black Baldy Dbl. Polled Purebred

ASA#3727656 Tattoo: 084H Birth: 2-9-20  
Act. BW: 67 Adj. WW: 813 WW Ratio: 104

EPDs															
CE	BW	WW	YW	ADG	MCE	MM	MWW	STAY	DOC	CWT	YG	MARB	BF	REA	API
14	-8	73	105	.20	8	27	63	13	6.0	36.7	-.46	.20	-.107	.94	134
Rank	15	10				15	25			25	35	30	20	35	30



HTP/SVF Duracell T52  
HPF Right To Love 365D  
RP/MP Right To Love 015U  
JHSN Black Edge 126U  
Hart Miss 619Z  
Hart Ms. New Design T270

• **Dam Ratios: WW 7@101**

• **HEIFER BULL CANDIDATE**

084H is an extremely flashy baldy RIGHT TO LOVE 365D "Cholo" son that has that really chiseled body style attributing back to his famous grandam RP/MP RIGHT TO LOVE 015U. She is the dam to the renowned full flush brothers HPF QUANTUM LEAP Z952 and THSF LOVER BOY B33 that have certainly made a monumental impact on the industry with numerous championships and continues to fulfill the demand for just the right amount of glitzy chrome flashy females and sons. 084H has just the right amount of everything neatly tied up on a super attractive balanced frame with 4 large hooves carrying his huge top and massive hind quarter setting him up for any avenue his path should take.

LOT  
22

Hart Firewater 090H

Red Baldy Dbl. Polled Purebred

ASA#3727237 Tattoo: 090H Birth: 2-9-20  
Act. BW: 78 Adj. WW: 815 WW Ratio: 104

EPDs															
CE	BW	WW	YW	ADG	MCE	MM	MWW	STAY	DOC	CWT	YG	MARB	BF	REA	API
11	1.1	84	114	.19	6	27	69	15	9.1	29.1	-.45	.17	-.100	.86	130
Rank		25				20	20					35			25

HPF Right To Love 365D HTP/SVF Duracell T52  
RP/MP Right To Love 015U  
Hart Miss 048D Welsh's Warsaw 312Z  
Hart Miss 275A

• **Dam Ratios: WW 3@108**

Firewater has a very poised unique physical attraction, a real confidence air to him and striking baldy pattern in this Cholo red son. His sons have collectively gone above and beyond in terms of style, substance, super structure and Firewater has all the pieces and parts to satisfy even the most critical evaluation.

LOT  
23

Hart 113H

Blaze Face Black Dbl. Polled Purebred

ASA#3727558 Tattoo: 113H Birth: 2-11-20  
Act. BW: 76 Adj. WW: 779 WW Ratio: N/A

EPDs															
CE	BW	WW	YW	ADG	MCE	MM	MWW	STAY	DOC	CWT	YG	MARB	BF	REA	API
11	2.2	81	122	.25	7	22	63	16	9.0	38.0	-.43	.16	-.116	.80	132
Rank		30	30			25				20			10		35

• **Dam Ratios: BW 11@104 & WW 11@104**

We certainly feel like luck was on our side when things lined up for us to purchase Cholo at 2019 "The One" sale at the NWSS and what a set of bulls he brought to the plate. What a legacy that is continuing for the sons of the great Right To Love 015U dam. 113H has an intriguing blaze face look and attractiveness as well as great muscle shape that lends him that patented stature that runs in this great dynasty.

HPF Right To Love 365D HTP/SVF Duracell T52  
RP/MP Right To Love 015U  
Hart Ms. Royalflush U355 KWF Royal Flush M8  
Hart Frontman Lass R327





Hart 195A, Maternal Brother



Hart 064B, Maternal Brother

**LOT**  
**24**
**Hart 170H****Black Baldy Dbl. Polled Purebred**ASA#3727552 Tattoo: 170H Birth: 2-28-20  
Act. BW: 78 Adj. WW: 836 WW Ratio: 107

EPDs															
CE	BW	WW	YW	ADG	MCE	MM	MWW	STAY	DOC	CWT	YG	MARB	BF	REA	API
11	2.5	82	107	.16	6	28	69	17	7.6	23.9	-.43	.19	-.096	.78	132
Rank															
	30					20	20					35			35

HPF Right To Love 365D HTP/SVF Duracell T52  
 RP/MP Right To Love 015U  
 Hart Miss X348 SAS T101 Sweet Meat  
 Hart Lady Magnum P152

**• Dam Ratios: BW 8@104 & WW 8@109**

When Right To Love got to make his move to South Dakota, he made a little prayer to the man upstairs and asked to be placed in a location where he thought he would be the right kind of fit for most progressive stringent programs. Which shows he could really make his mark and he couldn't have gone to a better place! Hart Miss 348X is a Sweet Meat dam that hits her mark again and again and this dynamite mating put out a blaze faced bull that has such cool markings but that isn't all he has in his bag of tricks - he has a loose made body shape to allow those extra pounds to pack on, huge depth of rib, extra large top line, and what a extensive hind quarter.

**LOT**  
**25**
**Hart 125H****Black Dbl. Polled Purebred**ASA#3727627 Tattoo: 125H Birth: 2-14-20  
Act. BW: 80 Adj. WW: 799 WW Ratio: 102

EPDs															
CE	BW	WW	YW	ADG	MCE	MM	MWW	STAY	DOC	CWT	YG	MARB	BF	REA	API
10	2.2	76	112	.23	6	24	62	16	7.9	30.2	-.54	.14	-.112	1.07	128
Rank															
											5		10	15	

**• Dam Ratios: BW 6@100 & WW 6@101**

Let's start by saying the Cholo sons did not disappoint and are defiantly built for the long haul! They will help you maximize your investment with low inputs and exceeding extensive outcome. They are rugged, easy fleshing individuals that meld together perfect balance with super correct angles and unquestionable structural integrity. Time to put these timeless genetics to work for you.

HPF Right To Love 365D HTP/SVF Duracell T52  
 RP/MP Right To Love 015U  
 Hart Miss 500Y JHSN Black Edge 126U  
 Hart Ms. Newdesign U620

**LOT**  
**26**
**Hart 126H****Black Dbl. Polled Purebred**ASA#3727471 Tattoo: 126H Birth: 2-15-20  
Act. BW: 78 Adj. WW: 788 WW Ratio: 101

EPDs															
CE	BW	WW	YW	ADG	MCE	MM	MWW	STAY	DOC	CWT	YG	MARB	BF	REA	API
12	1.8	82	115	.21	6	23	64	13	9.0	33.1	-.42	.11	-.096	.86	124
Rank															
35		30								35					

**• Dam Ratios: BW 2@101, WW 2@104**

We can't think of a better way to start some of these young dams such as this Utah female that has already ushered her first bull in our 2020 sale to Rau's, then to put up another salty soggy made Cholo son. 126H boasts a vast three dimensional carriage that goes on for days that makes him a wise choice and will work in any scenario and in any program that sells for a premium.

HPF Right To Love 365D HTP/SVF Duracell T52  
 RP/MP Right To Love 015U  
 Hart Miss 246E W/C Utah 534A  
 Hart Sweet Sandy W311





## Hart 166H

**Black Baldy Dbl. Polled Purebred** ASA#3727379 Tattoo: 166H  
Birth: 2-25-20 Act. BW: 78 Adj. WW: 770 WW Ratio: N/A

HPF Right To Love 365D

HTP/SVF Duracell T52

Hart Miss 164B

RP/MP Right To Love 015U

SKORS Black Enticer 287Y

Hart Lady Legacy T134

• **Dam Ratios: WW 5@104 & YW 4@103**• **HEIFER BULL CANDIDATE**

Sound, bold centered, plenty of stout substance and true from all views from tip to tail and will generate every red cent and more when you decide to invest in his future. With his extra fancy markings, we can't help but think with his dam's more maternal history that 166H will sire the most sought after beautiful females with very distinctive looks will help catch all the right attention!

EPDs																	
CE	BW	WW	YW	ADG	MCE	MM	MWW	STAY	DOC	CWT	YG	MARB	BF	REA	API	TI	
12	.2	73	106	.21	7	29	65	16	6.7	33.7	-.44	.19	-.093	.97	135	79	
Rank																	
35	25				25	15	35			35		35		30	35		



Hart 096G, Maternal Brother



## Hart 145H

**Black Blaze Face Dbl. Polled Purebred** ASA#3727317 Tattoo: 145H  
Birth: 2-20-20 Act. BW: 78 Adj. WW: 831 WW Ratio: 106

EPDs																	
CE	BW	WW	YW	ADG	MCE	MM	MWW	STAY	DOC	CWT	YG	MARB	BF	REA	API	TI	
13	1.4	81	110	.19	7	27	68	16	8.1	34.6	-.38	.22	-.084	.86	137	82	
Rank																	
25	35				30	25	25			30		25			30	25	

HPF Right To Love 365D

HTP/SVF Duracell T52

Hart Miss 116D

RP/MP Right To Love 015U

Welsh's Warsaw 312Z

Hart Miss X453

• **Dam Ratios: BW 3@101 & WW 3@107**

Hart 145H is a very flashy blaze faced, predictable breeding specimen in his key fundamentals like his bold deep rolling middle, extensive muscle pattern shape coupled with superior skeletal quality. His Warsaw dam brings her "A" game every year and outdoes herself with each performance, 3 very complete breeding pieces is her icing on the cake.



Hart Dillon 173E, Maternal Brother



## Hart 148H

**Red Dbl. Polled Purebred** ASA#3727538 Tattoo: 148H  
Birth: 2-20-20 Act. BW: 67 Twin Adj. WW: 795 WW Ratio: N/A

EPDs																	
CE	BW	WW	YW	ADG	MCE	MM	MWW	STAY	DOC	CWT	YG	MARB	BF	REA	API	TI	
12	1.2	79	121	.26	7	21	61	15	7.3	30.5	-.41	.26	-.091	.84	139	83	
Rank																	
30		35	35	35								20			25	25	

HPF Right To Love 365D

HTP/SVF Duracell T52

Hart Miss 326Z

RP/MP Right To Love 015U

JHSN Black Edge 126U

Hart Miss Club King T428

• **Dam Ratios: WW 5@100**

The amount of power the dam has as she feed two babies and have very respectable results as one would expect from great cows. 148H is a big topped, very extended in his rib depth out of this cow with a perfect udder that is very maternal and should put that into his calves.





## Hart 207H

Black Blaze Face Dbl. Polled Purebred

ASA#3727494 Tattoo: 207H Birth: 3-6-20  
Act. BW: 78 Adj. WW: 942 WW Ratio: 120

HTP/SVF Duracell T52  
HPF Right To Love 365D  
RP/MP Right To Love 015U  
WLB Roughneck 366R 377W  
Hart Miss 275A  
Hart Miss Royal Flush S5

• **Dam Ratios: BW 6@101,  
WW 6@108 & YW 5@103**

The ever increasing demand for outcross purebred herd sire prospects leads us on extensive pilgrimages to seek out the very best and we are not alone in the trek. Roughneck was one of those perfect bulls we found on a trip to Canada and not only lived up to our expectations but expanded our cow program to new heights and his daughters in the herd are some of our favorites. Hart Miss 275A has as many accolades as a show animal would except it is done right here on the farm - Hart Boost 306F, Hart 230E, Hart Miss 048D who has her own red blaze son in the sale. 207H is about a textbook as it gets in his sheer mass while maintaining correct structure, perfect balance and has an overabundance of suitable size and weight all wrapped up in this pretty blaze faced package! Cut your trek short and do your shopping in just one place - HERE!



EPDs															
CE	BW	WW	YW	ADG	MCE	MM	MWW	STAY	DOC	CWT	YG	MARB	BF	REA	API
10	2.1	87	121	.21	6	27	70	14	9.4	37.7	-.44	.17	-.103	.93	128
Rank															
		15	35			25	15			20		35	20		20

Hart Boost 306F,  
Maternal Brother



## Hart Two Buck Chuck 171H

Black Blaze Face Dbl. Polled Purebred

ASA#3727304 Tattoo: 171H Birth: 2-28-20  
Act. BW: 80 Adj. WW: 840 WW Ratio: 107

EPDs															
CE	BW	WW	YW	ADG	MCE	MM	MWW	STAY	DOC	CWT	YG	MARB	BF	REA	API
13	1.6	80	121	.26	7	28	68	14	8.3	29.1	-.38	.21	-.085	.78	133
Rank															
		35	35	35	35	20	20					30			25

HPF Right To Love 365D HTP/SVF Duracell T52  
Hart Miss 106Y RP/MP Right To Love 015U  
Hart In Time W095  
Hart Miss Club King W414

• **Dam Ratios: BW 7@103, WW 7@111 &  
YW 4@109**

Two Buck Chuck 171H captures and holds your attention with his super sharp blaze face pattern that is exactly the shape of a hear - a look that we refer to as flashy eye candy. He has a heavy bone on 4 excellent feet, very nicely extended in his rib cage, abundant muscle mass throughout. He stems from a Club King dam that keeps doing her thing right for a very long time and Two Buck Chuck is going to follow in her same footprints and will thrive on any level and used in many ways.



Hart Milo 211G, Maternal Brother



Hart Custer 095E, Maternal Brother



## Hart 54H

Black Dbl. Polled Purebred

ASA#3727327 Tattoo: 54H  
Birth: 3-31-20 Act. BW: 80 Adj. WW: 763 WW Ratio: N/A

EPDs															
CE	BW	WW	YW	ADG	MCE	MM	MWW	STAY	DOC	CWT	YG	MARB	BF	REA	API
12	2.0	72	100	.18	6	23	59	15	8.5	23.1	-.44	.17	-.094	.83	127
Rank															
												35			

HPF Right To Love 365D HTP/SVF Duracell T52  
Hart Miss 123C RP/MP Right To Love 015U  
JF Rancher 222Z  
Hart Miss E103N S154

A real striking pairing of Cholo and Rancher that is the only one in our offering and struts out in high fashion with a practical build, with a ton of rib depth for an end of March bull that is an easy keeping fleshy prime example of the perfect combo.




**LOT 33**

## Hart Peppered Steel 457H

**Black Dbl. Polled Purebred**

ASA#(3727184) Tattoo: 457H Birth: 3-14-20

Act. BW: 85 ET Twin Adj. WW: 812 WW Ratio: N/A

**LOT 34**

## Hart Culpeppered 458H

**Red Dbl. Polled Purebred**

ASA#(3727185) Tattoo: 458H Birth: 3-16-20

Act. BW: 80 ET Twin Adj. WW: 787 WW Ratio: N/A



### Pedigree for Lots 33-34:

HPF Right To Love 365D HTP/SVF Duracell T52  
 RP/MP Right To Love 015U  
 RS&T American Girl 1Y FBFS Vantage Point 021S  
 JDJ Rich And Rare 12S

EPDs															
CE	BW	WW	YW	ADG	MCE	MM	MWW	STAY	DOC	CWT	YG	MARB	BF	REA	API
13	.9	74	106	.20	7	22	59	15	9.5	24.8	-.46	.13	-.098	.88	129
Rank	25	35			25						35				77

This set of full flush brothers has been equally impressive since they made their appearance in the middle of March and have not slowed up one bit. Peppered Steel is going to tote his own set of claims to becoming the king of clout with his potent fundamentals creating a deep sweeping rib and chest floor, a loose build allows him to stuff in those extra groceries. Culpepper is the red head of this dynamic duo and stands up to his brother in everyway except with his own outward flash of hot sauce. They are two peas in a pod in terms of their explosiveness and their hope to live up to the standards left behind by Right To Love famous pedigree - we agree that they most certainly will.



RS&amp;T American Girl 1Y, Dam



Hart Bourbon 100F, Maternal Brother



Hart Give Me A Lotta Love 456H, Full Sister





## Hart 286H

## Black Dbl. Polled Purebred

ASA#3727595 Tattoo: 286H Birth: 3-16-20  
Act. BW: 80 Adj. WW: 645 WW Ratio: N/A

HTP/SVF Duracell T52  
HPF Right To Love 365D  
RP/MP Right To Love 015U  
Swain Movin On 722T  
Hart Miss X398  
Hart Gold Mine Lass R118

## • Dam Ratios: BW 9@100

This is a solid black Cholo son out of a Movin On daughter that has given us some very respectable progeny and has ushered in the likes of Hart Road Warrior 262C. 286H is a bit more moderate than his maternal brothers but most certainly has come along hugely since weaning.



EPDs																
CE	BW	WW	YW	ADG	MCE	MM	MWW	STAY	DOC	CWT	YG	MARB	BF	REA	API	TI
12	1.4	67	94	.17	7	16	50	17	9.7	15.1	-.49	.04	-.105	.78	123	69
Rank																
30					30					20					20	



## Hart 353H

## Black Dbl. Polled Purebred

ASA#3727211 Tattoo: 353H Birth: 3-23-20  
Act. BW: 78 Adj. WW: 794 WW Ratio: 101

EPDs																		
CE	BW	WW	YW	ADG	MCE	MM	MWW	STAY	DOC	CWT	YG	MARB	BF	REA	API	TI		
12	2.0	78	113	.22	6	25	63	17	8.7	30.1	-.40	.19	-.088	.83	134	79		
Rank												35					35	

HPF Right To Love 365D HTP/SVF Duracell T52  
RP/MP Right To Love 015U  
Hart Miss 024D Welsh's Warsaw 312Z  
Hart Miss 212B

## • Dam Ratios: BW 3@103, WW 3@102 &amp; YW 2@104

This Cholo son is such a carbon copy to his maternal brother Hart Assult 059G from our 2020 sale and is designed with plenty of frame to go with that big weaning weight. He rounds everything out with perfect balance and correct clean lines and a very strong phenotypical pattern.



Hart Assult 059G, Maternal Brother



## Hart 364H

## Black Dbl. Polled Purebred

ASA#3727486 Tattoo: 364H Birth: 3-25-20  
Act. BW: 85 Adj. WW: 765 WW Ratio: N/A

EPDs																
CE	BW	WW	YW	ADG	MCE	MM	MWW	STAY	DOC	CWT	YG	MARB	BF	REA	API	TI
11	2.6	75	111	.23	7	23	60	14	7.9	23.9	-.48	.19	-.093	.95	127	77
Rank																
					30											

HPF Right To Love 365D HTP/SVF Duracell T52  
RP/MP Right To Love 015U  
Hart Ms. Traildust U262 BF L112 Trailblazer  
Hart Miss Lionheart K060

## • Dam Ratios: BW 11@101, WW 11@101 &amp; YW 8@102

Hart Ms. Traildust U262's Black Joker influence matched perfectly with Right To Love and gave us an incredible athletic individual with an abundant rib section, tons of dimension in a very attractive balanced package. 264H is a prime example of what our proven older dams certainly still have and really sets those trend setting progeny year after year. As the pictures prove that her bulls have the right stuff and her Hart Miss 307A daughter has produced Hart War Zone 249E and other top performing bulls.



Hart 187D, Maternal Brother





## Hart 400H

Black Blaze Face Dbl. Polled Purebred

ASA#3727514 Tattoo: 400H Birth: 3-31-20

Act. BW: 76 Adj. WW: 745 WW Ratio: N/A

EPDs															
CE	BW	WW	YW	ADG	MCE	MM	MWW	STAY	DOC	CWT	YG	MARB	BF	REA	API
15	-1.3	65	90	.16	8	22	54	15	6.7	17.5	-.46	.14	-.089	.84	132
Rank	10	10			15						35				74



HTP/SVF Duracell T52  
 HPF Right To Love 365D  
 RP/MP Right To Love 015U  
 ES Ridgerider YW3  
 Hart Miss 300C  
 Hart Wise Guy Lass W466

## • HEIFER BULL CANDIDATE

Here is a big time heifer bull contender that exemplifies the type, kind and style of individuals we strive for and expect to produce. He ties in all his fine attributes together in a neatly attractive blaze face, super chromed up package giving him an elite look to him.



## Sons of QB Last Frontier F42

Homozygous Black Homozygous Polled 3/4 SM 1/4 AN ASA#3509777

Tattoo: F42 Birth: 3-5-18

CCR Frontier 0053Z x QB Ms. Last Call B714

EPDs															
CE	BW	WW	YW	ADG	MCE	MM	MWW	STAY	DOC	CWT	YG	MARB	BF	REA	API
7	3.5	82	136	.34	2	25	66	14	16.8	38.3	-.39	.21	-.066	1.07	116

Last Frontier was our newest selection as our next power performance packed herd bull that for sure has that stacked genetic deck with bountiful masculinity, impressive structure that is not easily matched at other places but certainly felt right at home here with the number of top tier herd sires we have here. His sons are all a cut above with more frame, style and substance for days. We have a daughter in our first inaugural heifer lineup that is as equally impressive as her brothers, they will all have a resurgence of popularity.



## Hart 189H

Black Homozygous Polled Purebred

ASA#3727528 Tattoo: 189H Birth: 3-2-20

Act. BW: 85 Adj. WW: 806 WW Ratio: 103

Homozygous Polled

EPDs															
CE	BW	WW	YW	ADG	MCE	MM	MWW	STAY	DOC	CWT	YG	MARB	BF	REA	API
9	2.2	74	116	.26	5	28	65	14	14.7	27.1	-.42	.11	-.089	.85	120
Rank															75

QB Last Frontier F42 CCR Frontier 0053Z  
 QB Ms. Last Call B714  
 EKHCC Madame C 314 STF Chisel W135  
 EKHCC Miss Primecut 212

## • Dam Ratios: WW 6@102

EKHCC Madame C314A was purchased in the 2014 Minnesota State Sale for her outcross pedigree to our program and she has been producing great sound results. 189H is the model of his dam with his multifunctionality, sound to the ground on 4 extra large hooves, very bold centered and with the caliber of animals that Last Frontier has been bringing to the table, this is one power packed individual.





LOT  
40

## Hart Engineeer 208H

**Black Homozygous Polled Purebred**

ASA#3727670 Tattoo: 208H Birth: 3-6-20  
Act. BW: 78 Adj. WW: 788 WW Ratio: 101

*Homozygous Polled*

EPDs															
CE	BW	WW	YW	ADG	MCE	MM	MWW	STAY	DOC	CWT	YG	MARB	BF	REA	API
10	2.3	83	126	.27	3	24	65	15	15.5	34.0	-.41	.13	-.082	.94	127
Rank															
		25	25	25			35		10	35				35	35

QB Last Frontier F42

CCR Frontier 0053Z

QB Ms. Last Call B714

KSR Oakley 695C

CCR Cowboy Cut 5048Z

KSR Linda 195X

### • Dam Ratios: WW 4@100

What is presented to you is most assuredly a top sale highlight showstopper that just has that it factor and is a bell ringer from Last Frontier, Engineer exemplifies a wealth of high profile qualities and has had that from the time he hit the ground. It is hard to deny his poise, presence and prowess that particularly ends up on top of the pile every time. There is certainly some close resemblance to Cowboy Cut that puts a certain amount of consistency in the way his muscles are laid in so smoothly and seamlessly with his super shape grabs your eye and attention wherever he is in the pen. This is a no holes stunner that can stand on his own and no questions about soundness and structure as we are well known for our cattle that keep those extra large hooves into production and make sure these animals are used for years maximizing your investment.



KSR Oakley 695C, Dam



CCR Cowboy Cut 5048Z, Maternal Grandsire



LOT  
41

## Hart Klondike 236H

Homozygous Black Homozygous Polled 3/4 SM 1/4 AN

ASA#3727637 Tattoo: 236H Birth: 3-9-20

Act. BW: 78 Adj. WW: 833 WW Ratio: 106

QB Last Frontier F42

CCR Frontier 0053Z

QB Ms. Candy C550

QB Ms. Last Call B714

W/C United 956Y

ASR Ms. Desi Z2110

Homozygous Polled  
Homozygous Black

EPDs																
CE	BW	WW	YW	ADG	MCE	MM	MWW	STAY	DOC	CWT	YG	MARB	BF	REA	API	TI
8	3.0	93	150	.35	4	24	70	11.1	12.9	48.5	-.38	.14	-.065	1.18	113	82
Rank		4	3	5			10		35	10	15		25	2		30

## • Dam Ratios: BW 4@103, WW 4@103 &amp; YW 2@110

Some picture perfect genetics at work here with this Last Frontier son and lending the United on the bottom side and puts as much quality into an individual as you can possibly pack into a frame. While you are evaluating his undeniable stacked set of EPDs, make sure you compare all of his traits in person to what is compiled on paper as he matches up to a tee what is documented. Your analysis will include heavy bone, rugged square build but with his own touch of refinement, top tier masculinity, fantastic testicular growth, uniformity on a set of fault free hooves that balances from end to end. Klondike will give your program that competitive edge and help you succeed in the top spot at the markets.

LOT  
42

## Hart 366H

Homozygous Black Homozygous Polled Purebred ASA#3727192

Tattoo: 366H Birth: 3-25-20 Act. BW: 85 Adj. WW: 765 WW Ratio: N/A

QB Last Frontier F42

CCR Frontier 0053Z

Hart Miss 007C

QB Ms. Last Call B714

RS&amp;T Shocking Rare A310

Hart Miss 137A

Homozygous Polled  
Homozygous Black

EPDs																
CE	BW	WW	YW	ADG	MCE	MM	MWW	STAY	DOC	CWT	YG	MARB	BF	REA	API	TI
8	3.1	81	128	.29	3	19	60	15	13.6	37.2	-.41	.13	-.083	1.00	122	78
Rank		30	20	15					20	25				25		

366H not only checks all of the boxes he exemplifies and shows a symmetrical look at any angle, and on the stout monitor he puts in a respectable showing.

LOT  
43

## Hart 237H

Homozygous Black Homozygous Polled Purebred ASA#3727409

Tattoo: 237H Birth: 3-9-20 Act. BW: 74 Adj. WW: 775 WW Ratio: N/A

QB Last Frontier F42

CCR Frontier 0053Z

Hart Miss 190D

QB Ms. Last Call B714

WS All Around Z35

Hart Miss 468Z

Homozygous Polled  
Homozygous Black

EPDs																
CE	BW	WW	YW	ADG	MCE	MM	MWW	STAY	DOC	CWT	YG	MARB	BF	REA	API	TI
11	1.9	81	132	.32	5	23	63	15	13.7	37.3	-.38	.14	-.070	1.01	131	80
Rank		35	15	10					20	25				25		35

## • Dam Ratios: WW 3@100 &amp; YW 2@105

For those enthusiast that pay particular close attention to the back lineage to the investment, you are about to obtain- as any conscious producer should-237H's All Around dam has already put forth a 2019 sale highlight that went into Montana- Hart 335F, and her heifer calf from last year is going to be having her first baby here in a couple of weeks. So take the proven track record here and make this Last Frontier son your start to take your program to the next highs.





## Hart 235H

Homozygous Black Homozygous Polled Purebred

ASA#3727501 Tattoo: 235H Birth: 3-9-20

Act. BW: 87 Adj. WW: 752 WW Ratio: N/A

Homozygous Polled  
Homozygous Black

CCR Frontier 0053Z  
QB Last Frontier F42  
QB Ms. Last Call B714  
SVF Z47 Patch  
Hart Miss 280D  
Hart Miss 049A

• **Dam Ratios: BW 3@103 & WW 3@105**

A Last Frontier calf that carries a little bit more moderate frame but still shows a big wide top, explosive rib section, deep quarter that certainly throws a nod to Patch - a herd bull who we used heavily in our program due to his profound power throughout his total frame and this Last Frontier son is a look alike.



SVF Z47 Patch, Maternal Grandsire



## EPDs

CE	BW	WW	YW	ADG	MCE	MM	MWW	STAY	DOC	CWT	YG	MARB	BF	REA	API	TI
5	5.3	85	138	.33	2	24	66	17	13.2	32.3	-.45	.05	-.086	1.03	118	76

Rank	20	10	4	30	25
------	----	----	---	----	----



## Hart 354H

Homozygous Black Homozygous Polled Purebred

ASA#3727259 Tattoo: 354H Birth: 3-23-20

Act. BW: 78 Adj. WW: 731 WW Ratio: N/A

Homozygous Polled  
Homozygous Black

CCR Frontier 0053Z  
QB Last Frontier F42  
QB Ms. Last Call B714  
ES Ridgerider YW3  
Hart Miss 064A  
Hart Miss 385Y

• **Dam Ratios: WW 5@103**

Every mating from Last Frontier is our offered to a different dam and frankly we were inspired by the performances. What a diverse group to choose from- it won't be an easy decision.



QB Last Frontier F42, Sire



## EPDs

CE	BW	WW	YW	ADG	MCE	MM	MWW	STAY	DOC	CWT	YG	MARB	BF	REA	API	TI
10	1.4	70	109	.24	5	25	60	15	15.6	28.2	-.43	.15	-.089	.90	127	75

Rank	10
------	----





## Sons of LRS Elevate 213B

**Homozygous Black Homozygous Polled Purebred**

ASA#2842534 Tattoo: 213B Birth: 3-5-14

**Hook's Yellowstone 97Y x LRS Ms. Dual Focus 213Z**

EPDs															
CE	BW	WW	YW	ADG	MCE	MM	MWW	STAY	DOC	CWT	YG	MARB	BF	REA	API
16	-1.2	79	123	.28	9	26	65	14	1.5	23.3	-.47	.16	-.074	1.08	139

Elevate is not the new kid on the block, but we were given the opportunity to bring him up here to SD and we didn't even blink an eye. If you remember, we were contending bidders the day he sold as a yearling and thought he would be a perfect match to our ladies. It has been a few years and he showed no sign of slowing up yet and he ran the greens here like a champ and came of pasture as though he hadn't even left the ranch. He is widely known for his excellent calving ease and definity didn't disappoint and put out a very nice selection and his heifer-woofa what a set of ladies!!!

**LOT 46**

## Hart High Country 136H

**Homozygous Black Homozygous Polled Purebred**

ASA#3727334 Tattoo: 136H Birth: 2-16-20

Act. BW: 76 Adj. WW: 833 WW Ratio: 106

LRS Elevate 213B

Hook's Yellowstone 97Y

Hart 130F

LRS Ms. Dual Focus 213Z

R&R Platinum D135

Hart Ms. Dreammaker U442

**Homozygous Polled**  
**Homozygous Black**

EPDs															
CE	BW	WW	YW	ADG	MCE	MM	MWW	STAY	DOC	CWT	YG	MARB	BF	REA	API
12	2.3	79	123	.27	7	29	68	15	5.8	25.2	-.47	.04	-.083	1.04	124

High Country take an expected awareness of his body type, superior structure and abundant power from some well-known descendants and is a breath of fresh air. Elevate has risen to the top of the calving ease scene and leaves an ideal impression no matter what avenue you decide to put in front of him. High Country is textbook Elevate pattern and has a tremendous heel under him.

**LOT 47**

## Hart High Caliber 186H

**Homozygous Black Homozygous Polled Purebred**

ASA#3727591 Tattoo: 186H Birth: 3-2-20

Act. BW: 76 Adj. WW: 838 WW Ratio: 107

LRS Elevate 213B

Hook's Yellowstone 97Y

Hart 395F

LRS Ms. Dual Focus 213Z

M4 Blackstone Z43B

Hart Miss 006D

**Homozygous Polled**  
**Homozygous Black**

EPDs															
CE	BW	WW	YW	ADG	MCE	MM	MWW	STAY	DOC	CWT	YG	MARB	BF	REA	API
13	1.1	85	128	.27	7	25	67	16	7.5	34.6	-.41	.13	-.078	1.00	137

This Elevate son lives up to his name and has a high caliber amount of sheer body mass and substance that marries so well with a top tier EPD spread. His head and neck carriage sets nicely at the top of his shoulders and travels down to a super smooth line that rolls on down into an obvious down to the ground middle. As you move behind him, he sets up square on 4 large hooves letting him move freely and completes this unique package.





## Sons of WHF Eclipse E35 "ZIP TIE"

Homozygous Black Homozygous Polled 3/4 SM 1/4 AN

ASA#3310453 Tattoo: E35 Birth: 3-3-17

TJ Main Event 503B x WHF Canda 35C

EPDs																
CE	BW	WW	YW	ADG	MCE	MM	MWW	STAY	DOC	CWT	YG	MARB	BF	REA	API	TI
12	1.1	103	151	.30	6	27	79	12	10.3	50.5	-.40	-.14	-.076	1.19	110	84

Eclipse or "Zip Tie" as we call him, came to us by way of the 2018 Bulls of the Bluegrass sale and from the Wayward Hills Farms known for their impressive show cattle. But it was Zip Tie's excellent stature and tremendous power and first class calving ease #'s that had us at hello. He pushes the envelope in terms of supreme weaning weight data, has a zipper front, nice smooth shoulders, level topped and big backed, rounding out a big ol' set of hooves and great leg structure! With the performance that we are seeing out of his progeny, we know he will have a bright future here.



LOT  
48

## Hart Midnight Moon 031H

Black Dbl. Polled Purebred

ASA#3727250 Tattoo: 031H Birth: 1-31-20

Act. BW: 71 Adj. WW: 815 WW Ratio: 104

EPDs																
CE	BW	WW	YW	ADG	MCE	MM	MWW	STAY	DOC	CWT	YG	MARB	BF	REA	API	TI
12	.8	89	132	.27	6	29	74	16	11.6	36.1	-.42	.03	-.084	1.02	131	84
Rank	30	10	15	25		15	10			25				20		20



Hart Nitty Gritty  
203E, Son of  
492Z

WHF Eclipse E35

Hart 058F

TJ Main Event 503B

WHF Canda 35C

DKSR Hollow Point C66

Hart Miss 492Z



### • HEIFER BULL CANDIDATE

Midnight Moon is sure to be a 2021 sale highlight and has already compiled a vast number of admirers that have already been here to view him in the flesh. He has an impeccable amount of mass but oh so streamline in his lines and muscle definition and smooth shoulder area. He brings your eye down into his soggy deep chest wall and belly dragging middle. He has an impressive EPD profile that is just as impressive as he is and is icing on the cake that matches his unique genetic combination that will be a perfect addition to any program.



LOT  
49

## Hart Black Out 004H

Homozygous Polled

Black Homozygous Polled Purebred ASA#3727191 Tattoo: 004H  
Birth: 1-24-20 Act. BW: 78 Adj. WW: 790 WW Ratio: 101

WHF Eclipse E35

TJ Main Event 503B

Hart 007F

WHF Canda 35C

BBS True Justice B10

Hart Miss 348D

Even though this sublime combo from two very impactful calving ease sires on each side of the pedigree, his CDI Made Right grandmother is what gives him just a notch more BW than we feel comfortable in recommending in a heifer bull. Black Out is certainly a contender when it comes to the power of Eclipse and that we definitely recommend to any breeder.

Black Out has super clean lines, flat shouldered and boasting an extra-large set of testicles and his True Justice mother has a textbook perfect udder.



EPDs

CE	BW	WW	YW	ADG	MCE	MM	MWW	STAY	DOC	CWT	YG	MARB	BF	REA	API	TI
11	2.5	101	157	.35	6	28	79	17	11.4	45.2	-.41	.05	-.075	1.16	136	90
Rank		1	1	2		20	2			10				10	30	10

LOT  
50

## Hart Suns Out 009H

Homozygous Black Homozygous Polled Purebred

ASA#3727400 Tattoo: 009H Birth: 1-26-20  
Act. BW: 69 Adj. WW: 822 WW Ratio: 105

EPDs

CE	BW	WW	YW	ADG	MCE	MM	MWW	STAY	DOC	CWT	YG	MARB	BF	REA	API	TI
13	.4	100	148	.30	6	25	75	14	11.6	49.3	-.39	-.03	-.081	1.10	130	89
Rank		25	25	1	3	15		35	4	3				10		10

WHF Eclipse E35

TJ Main Event 503B

Hart 184F

WHF Canda 35C

DJF Trademark D634

Hart Miss 137D

Homozygous Polled  
Homozygous Black

## • HEIFER BULL CANDIDATE

Holy cow-pun intended! Suns Out with his no holes exceptional Trademark dam who has been blessed with her mother's highly maternal driven traits that one can't but admire as she has contributed two fine daughters getting the job done. Suns Out has been graced with an overpowering center rib section that compliments his large top line and defining massive hind flank and will be the type to fill anyone's order on a heifer bull deluxe with a world of revenue driving potential!

LOT  
51

## Hart 132H

Black Homozygous Polled Purebred

ASA#3727236 Tattoo: 132H Birth: 2-15-20  
Act. BW: 71 Adj. WW: 781 WW Ratio: 100

WHF Eclipse E35

TJ Main Event 503B

Hart 048F

WHF Canda 35C

DKSR Hollow Point C66

Hart Miss X347

Homozygous Polled

EPDs

CE	BW	WW	YW	ADG	MCE	MM	MWW	STAY	DOC	CWT	YG	MARB	BF	REA	API	TI
13	.2	85	125	.25	6	28	71	17	10.6	32.5	-.37	-.04	-.077	.86	130	80
Rank		25	25	20	25		20	15	35							35

## • HEIFER BULL CANDIDATE

It is highly satisfying to go out and watch a group of young females with their babies at their side, and the babies are almost as big as the mothers and are stepping up to the plate and delivering maximum efforts. This is another State of War and Eclipse duo featuring that sure fire State of War bulletproof performance that brings along the exact same finishes and flares that are necessary to complete the task at hand, which is to deliver results to you the producer.



**Hart 040H****Black Homozygous Polled Purebred**ASA#3727246 Tattoo: 040H Birth: 2-1-20  
Act. BW: 91 Adj. WW: 801 WW Ratio: 102**Homozygous Polled**

EPDs															
CE	BW	WW	YW	ADG	MCE	MM	MWW	STAY	DOC	CWT	YG	MARB	BF	REA	API
13	.8	94	134	.25	7	28	76	17	13.2	39.5	-.40	-.14	-.085	.99	125
Rank															
25	30	4	15		30	20	4		25	15				25	25

TJ Main Event 503B  
WHF Eclipse E35  
WHF Canda 35C  
Hart State Of War 056C  
Hart 055F  
Hart Miss 325Z

**• Heifer Bull Candidate**

Now this is what it looks like when take out all the guesswork that we have applied in your place and all you need to do is show up and raise your hand. This is a superior combination of yep, you guessed it- State of War on the bottom side and a TJ Main Event son- Eclipse on the top. We firmly believe that bigger things are on the horizon for State of War as his semen sales this year reflect the forward trend in a big way and if 040H is an indicator of those great things, look out!



Hart  
Arlington  
093E, Son of  
Hart  
Miss 325Z

**Sons of GLS Integrate Z3****Homozygous Black Homozygous Polled Purebred** ASA#2659754 Tattoo: Z3 Birth: 1-1-12**Mr. NLC Upgrade U8676 x GLS Miss BTE W149**

EPDs															
CE	BW	WW	YW	ADG	MCE	MM	MWW	STAY	DOC	CWT	YG	MARB	BF	REA	API
13	2.5	104	171	.42	7	17	68	5	15.1	73.3	-.55	-.15	-.141	1.42	107

When you raise seedstock with one main goal your entire 45 years of existence you remember each and every single great animal you ever raised or purchased. We remember just like it was yesterday when the opportunity presented itself to purchase Integrate. We just remember Kerry saying "no matter what that bull is coming to SD", and even though he can no longer service females, he will live out his glory days basking in the sunny days at the farm (ok, there are no sunny days). We have a very limited amount of semen left, so we are rationing it out and we are so very fortunate that it stuck!!!

**Hart 061H****Homozygous Black Homozygous Polled Purebred**ASA#3727509 Tattoo: 061H Birth: 2-4-20  
Act. BW: 70 Adj. WW: 792 WW Ratio: 101**Homozygous Polled**  
**Homozygous Black**

EPDs															
CE	BW	WW	YW	ADG	MCE	MM	MWW	STAY	DOC	CWT	YG	MARB	BF	REA	API
12	1.1	81	126	.28	6	20	60	14	12.4	43.7	-.47	-.14	-.116	1.00	115
Rank															
	35	25	20						35	10	30		10	25	



GLS Integrate Z3

Hart Lady Locator T288

Mr. NLC Upgrade U8676  
GLS Miss BTE W149  
COTT Locator 582L  
Hart Cracker Barrel Lass

Hart Daddy War Bucks  
082G, Maternal Brother

Take full advantage of our very last final curtain call of Integrate bulls and then this is the last animal in the illustrious career of one of our cornerstone females "Hart Lady Locator T288". As we close this chapter on two very prolific herd builders here at Hart's we feel compelled to at least pay homage to them both as we all full well know that you can't have a herd with out the Hart of the herd-your females! Hart Lady Locator T288 made a splash from the get go and made way more share of dominant females and almost all of are here still working hard for us, W547, X428, 533Y, 535Z, 140C, 086B and 056D. Integrate has had his share of the greats as well spanning over 7 years and surpassing well over 500 in progeny in our books that puts him in the league of elites!! 061H has some mighty big shoes to fill but think he can stand well on his own as we brought him right out of the pasture off his mama with an actual weaning weight of 888lbs. He has all the right bells and whistles to push himself to that same status.





Hart 045B, Maternal Brother



Hart 472Y, Maternal Brother



Hart Bandit X519, Maternal Brother

**LOT 54**

## Hart Armstrong 093H

**Homozygous Black Dbl. Polled Purebred**

ASA#3727539 Tattoo: 093H Birth: 2-9-20  
Act. BW: 71 Adj. WW: 816 WW Ratio: 104

**Homozygous Black**

EPDs															
CE	BW	WW	YW	ADG	MCE	MM	MWW	STAY	DOC	CWT	YG	MARB	BF	REA	API
12	1.2	81	133	.32	7	23	63	11	9.2	51.1	-45	.04	-.119	1.00	122
Rank															
30		30	15	10	30					2			10	25	

GLS Integrate Z3

Mr. NLC Upgrade U8676

GLS Miss BTE W149

Hart Lady Nasdaq S329

Hart Nasdaq L181

Hart Miss Paramount P170

### • Dam Ratios: WW 10@101

Integrate surely left everything on the table with his last final 3 bulls in his last offering and this big brute proves that he certainly was the real deal and many other breeders would say the same thing. Hart Lady Nasdaq S329 is also making her final debut on the screen and leaves us with more fine females than one could ever want for. U526, W143, 536Z, 382E, 284D, 248G. She was another cornerstone female that formed the type of individuals that solidified our program and put us where we are today. Armstrong is a high caliber bull with whopper status, tons of skeletal width and has the perfect amount of everything to move your program to the next level.

**LOT 55**

## Hart 104H

**Homozygous Black HOMOZYGOUS Polled Purebred**

ASA#3727612 Tattoo: 104H Birth: 2-10-20  
Act. BW: 83 Adj. WW: 756 WW Ratio: N/A

GLS Integrate Z3

Mr. NLC Upgrade U8676

GLS Miss BTE W149

Hart Miss 441Y

SAS T101 Sweet Meat

Hart Lady Contender T243

**Homozygous Polled**  
**Homozygous Black**

EPDs															
CE	BW	WW	YW	ADG	MCE	MM	MWW	STAY	DOC	CWT	YG	MARB	BF	REA	API
11	2.9	87	127	.26	6	19	62	11	13.2	39.1	-48	.00	-.126	.89	112
Rank															
		15	20	35					25	20	25		2		

Hart 104H comes from a very powerful blood line on both sides of his pedigree making him shine and a for sure compliment from this duo. His impressive EPD profile matches his attributes in person and his 441Y dam has that textbook udder that we are so very critical on here.



## Sons of K-LER Franchise 804F

**Homozygous Black HOMOZYGOUS Polled Purebred**

ASA#3430423 Tattoo: 804F Birth: 1-18-18

**Hook's Beacon 56B x KMJ/K-LER Ms. Robust D336**

EPDs															
CE	BW	WW	YW	ADG	MCE	MM	MWW	STAY	DOC	CWT	YG	MARB	BF	REA	API
11	.1	94	136	.26	7	28	75	20	11.0	47.9	-.52	.76	-.054	1.70	182

Another new herd sire to our operation is Franchise, as Seth Kaehler approached Justin at NWSS and told him about their bull that was at the top of the industry for more than one trait and off Kerry and I went. It was the coldest day in Minnesota history-not a fun trip- many stalled vehicles along the interstate and the cab just wouldn't warm up, we bought 2 heaters at a fueling station and were able to get back home and the bull was ours. Just a few short years later and his first babies are almost a year old and up for evaluation, they are a brilliant set of calves with a huge curve bending genetics and a sure fire compliment to our large cows with all unassisted births that got right from the start.







## Hart Pocket Money 024H

**Black Homozygous Polled Purebred**

ASA#3727232 Tattoo: 024H Birth: 1-30-20

Act. BW: 65 Adj. WW: 790 WW Ratio: 101

*Homozygous Polled*

EPDs																
CE	BW	WW	YW	ADG	MCE	MM	MWW	STAY	DOC	CWT	YG	MARB	BF	REA	API	TI
13	-1.4	82	120	.24	8	31	72	19	8.9	43.7	-.46	.37	-.073	1.29	159	91
Rank																
20	10	30	35		20	10	10	15		10	35	10		2	4	5



AJEH

K-LER Franchise 804F

Hook's Beacon 56B

Hart 044F

KMJ/K-LER Ms. Robust D336

Hart State Of War 056C

Hart Miss 619Z

### • HEIFER BULL CANDIDATE

What a colossal start for this young State Of War heifer that collaborated so well with Franchise and her second to none dam Hart Miss 619Z who has her own sale highlight Hart 084H Cholo son. This is a very substantial heifer bull candidate who could very well be the next new giant in the industry and boasts a striking blend of extra width with streamline sleekness in his muscle definition and has all of the indicators lined up in a row to be a big league herd bull.



## Hart 023H

**Homozygous Black Homozygous Polled Purebred**

ASA#3727546 Tattoo: 023H Birth: 1-29-20

Act. BW: 69 Adj. WW: 822 WW Ratio: 105

EPDs																
CE	BW	WW	YW	ADG	MCE	MM	MWW	STAY	DOC	CWT	YG	MARB	BF	REA	API	TI
10	1.0	92	141	.31	6	31	77	20	11.1	50.8	-.50	.34	-.082	1.45	156	94
Rank																
	35	10	10	10		10	3	10		2	15	15		1	10	3

K-LER Franchise 804F

Hook's Beacon 56B

Hart 342F

KMJ/K-LER Ms. Robust D336

WCS El Dorado 5209C

Hart Miss 368A

*Homozygous Polled*  
*Homozygous Black*

### • HEIFER BULL CANDIDATE FOR LARGER HEIFERS

Pedigree, Pedigree, Pedigree!! This EL Dorado first calf heifer steals the show on her first offering and no denying that 023H came from a perfect mating of these two staples for us. He brings and excellent EPD profile to the table and totes a very impressive weaning weight plastered on a massive frame that allows for dynamic rib extension and bold hind quarter.



## Hart 153H

**Black Homozygous Polled Purebred**

ASA#3727491 Tattoo: 153H Birth: 2-22-20

Act. BW: 76 Adj. WW: 809 WW Ratio: 103

EPDs																
CE	BW	WW	YW	ADG	MCE	MM	MWW	STAY	DOC	CWT	YG	MARB	BF	REA	API	TI
10	2.1	90	133	.27	7	27	72	20	13.7	44.6	-.46	.46	-.073	1.34	159	93
Rank																
	10	15	25	35		25	10	10	20	10	35	4		2	4	3

K-LER Franchise 804F

Hook's Beacon 56B

Hart 273F

KMJ/K-LER Ms. Robust D336

BBS True Justice B10

Hart Miss X507

*Homozygous Polled*

If you are searching for the ultimate in genetics that has the complete package containing supreme quality, tons of performance that won't sacrifice any of his other fine attributes, than this dream wonder Franchise/True Justice combo is for you. Just the right amount of everything right to make some jim dandy replacements or highly productive feeders!



**Hart 063H****Homozygous Black Homozygous Polled Purebred**

ASA#3727322 Tattoo: 063H Birth: 2-4-20

Act. BW: 74 Adj. WW: 848 WW Ratio: 108

*Homozygous Polled*  
*Homozygous Black*

EPDs																
CE	BW	WW	YW	ADG	MCE	MM	MWW	STAY	DOC	CWT	YG	MARB	BF	REA	API	TI
10	1.9	101	146	.28	6	29	80	19	10.5	47.5	-.46	.41	-.066	1.42	158	99
Rank																
	1	4	20			15	1	20		4	35	10		1	5	1



Hook's Beacon 56B  
K-LER Franchise 804F  
KMJ/K-LER Ms. Robust D336  
DJF Trademark D634  
Hart 119F  
Hart Miss 197D

Here is a Franchise son that is modern with a shot of extra flare stemming from a fabulous Trademark dam. He is super refined and ultra-attractiveness about him that generates fantastic presence. He has a definite modern look to him from the top to bottom and back to front which equals his unparalleled numbers. He has it all - numbers, growth, quality, structure, uniformity, dimension, not sure if there are any other adjectives to describe this flashy bugger!

**Sons of HSR Power Plus D206****Black Dbl. Polled 3/4 SM 1/4 AN** ASA#3201850 Tattoo: D206 Birth: 3-20-16**TJ Power Grid 363Y x HSR Ms. Rookie Z751**

EPDs																
CE	BW	WW	YW	ADG	MCE	MM	MWW	STAY	DOC	CWT	YG	MARB	BF	REA	API	TI
9	3.0	97	152	.34	9	25	74	19	11.4	65.2	-.15	.03	-.049	.81	124	81

*Power Plus is a TJ Power Grid 363Y son that is certainly living up to his name as he just keeps improving those tremendous traits that transfer down into his sons and daughters. His tremendous depth of rib, extreme muscle definition, overall added dimension and unique functionality are the reason why his calves explode with superior growth and weaning weights that are a key component for any cattle breeding program! Therefore, his bull calves are soft, easy fleshing, early maturing herd bulls that are out of a huge variety of significant females and stayed precisely on point and consistently cranking out huge gaining bulls with that extra push at the scales. That's why they keep popping up to the top of our sales and are admired as standouts with many prominent industry leaders.*

**Hart 222H****Black Dbl. Polled Purebred** ASA#3727474 Tattoo: 222H

Birth: 3-8-20 Act. BW: 85 Adj. WW: 782 WW Ratio: 100

EPDs																
CE	BW	WW	YW	ADG	MCE	MM	MWW	STAY	DOC	CWT	YG	MARB	BF	REA	API	TI
8	2.7	86	126	.25	6	23	66	20	12.5	43.0	-.24	.00	-.062	.72	127	77
Rank																
	20	25				30	10	35	10							

HSR Power Plus D206

TJ Power Grid 363Y

Hart Miss 248C

HSR Ms. Rookie Z751

Welsh's Warsaw 312Z

Hart Miss 026A

**• Dam Ratios: BW 4@102**

What you see is what you get-absolute transparency with every animal in our program here at the ranch for your evaluation at any time. This is a must for us when we are trying to narrow down a selection of herd bull prospects as well a fancy bred or open replacements with an outcross pedigree to our program so why wouldn't we expect you to ask the very same of us. It is certainly what our customers appreciate and why we tried to so very hard to bring into the catalog this year so all of our online customers may view. We will try and get some more of those predominant ladies in the near future.





## Hart Power Pack 357H

**Black Dbl. Polled Purebred**

ASA#3727493 Tattoo: 357H Birth: 3-24-20  
Act. BW: 78 Adj. WW: 827 WW Ratio: 106

EPDs																	
CE	BW	WW	YW	ADG	MCE	MM	MWW	STAY	DOC	CWT	YG	MARB	BF	REA	API	TI	
9	2.7	88	137	.31	7	31	75	17	10.2	44.4	-.26	.11	-.071	.71	131	82	
Rank																	
		15	10	10	25	10	5				10						25



HSR Power Plus D206

TJ Power Grid 363Y

Hart Miss 275D

HSR Ms. Rookie Z751

JS Belmont 15B

Hart Miss 590Y

### • Dam Ratios: BW 3@100 & WW 3@106

This Power Plus individual just exudes that stature of his sire keeping in compliance with style, presence, correctness, uniformity, overall balance but yet without sacrificing any eye appeal. His overpowering growth profile matches him right down to the ground and his Belmont dam is the epitome of what a perfect cow should be- perfect gorgeous udder size with great teat size and placement which is the kink of cows you will find here at our program.



## Hart 372H

**Black Dbl. Polled Purebred**

ASA#3727561 Tattoo: 372H Birth: 3-26-20  
Act. BW: 87 Adj. WW: 775 WW Ratio: N/A

EPDs																
CE	BW	WW	YW	ADG	MCE	MM	MWW	STAY	DOC	CWT	YG	MARB	BF	REA	API	T
8	3.5	83	129	.29	6	23	65	20	12.7	42.8	-.25	.00	-.061	.75	126	7
Rank		25	20	15			35	10	30	10						

HSR Power Plus D206

TJ Power Grid 363Y

Hart Miss 360C

HSR Ms. Rookie Z751

OBCC King Pin W42Y

Hart Miss 359Z

### • Dam Ratios: BW 4@102

If your program is searching for a bull with substance, eye style points, abundant substance then this Power Plus son is for you. He has that classic shape and robustness and that defiantly you expect to see from his progeny- even the females as you will see in the heifer group offered that boasts the same excellent qualities.

This sale will be  
broadcast live  
on the internet!

**DVAuction**  
Broadcasting Real-Time Auctions

**If you cannot attend sale day we have online bidding!**





## Sons of Hart Prime 017E

**Homozygous Black Homozygous Polled Purebred** ASA#3257089 Tattoo: 017E Birth: 2-1-17  
**BBS True Justice B10 x Hart Miss 098C**

EPDs															
CE	BW	WW	YW	ADG	MCE	MM	MWW	STAY	DOC	CWT	YG	MARB	BF	REA	API
14	-1	88	143	.34	9	30	74	18	12.4	36.7	-.49	.11	-.120	.96	146

Let's visit about a hot commodity in the making, Hart Prime 017E was our top selling individual in our 2018 bull sale, a True Justice one of a kind specimen that did an outstanding performance in his first-year services in Montana. We were able to view his first babies in person and came to one conclusion-he is the real deal for moderate birth weights with solid results that lead to same end game- making great cattle better and is the right kind to command that all mighty dollar regardless of sex.

LOT  
63

## Hart Optimus Prime 182H

**Homozygous Black DbL. Polled/Scurred Purebred**

ASA#3727265 Tattoo: 182H Birth: 3-1-20  
 Act. BW: 78 Adj. WW: 877 WW Ratio: 112

*Homozygous Black*

EPDs															
CE	BW	WW	YW	ADG	MCE	MM	MWW	STAY	DOC	CWT	YG	MARB	BF	REA	API
11	1.0	87	130	.27	8	30	73	19	10.7	41.4	-.46	.10	-.111	.99	139

Rank	35	15	20	25	20	15	10	25		15	35		10	25	25
------	----	----	----	----	----	----	----	----	--	----	----	--	----	----	----



BBS True Justice B10  
 Hart Prime 017E  
 Hart Miss 098C  
 RS&T Shocking Rare A310  
 Hart Miss 069D  
 Hart Miss 164B

• **Dam Ratios: BW 3@102 & WW 3@106**

To say we were disappointed when Justin clipped him for the pictures is to say the least, he wasn't leaving here if his tests came back that he was homo black and homo polled, well our loss is your gain. His dam 069D is hetro polled, but when you are as good as she is, you look past that and hope for the 50% that is in your favor, maybe next year. Hart Optimus Prime 182H is a total ground sow that just happens to have a very nice moderate BW making him all that much more desirable, with all he has to offer his next owner. He will make a nice addition to any program.

LOT  
64

## Hart 137H

**Homozygous Black Homozygous Polled Purebred**

ASA#3727412 Tattoo: 137H Birth: 2-16-20  
 Act. BW: 78 Adj. WW: 801 WW Ratio: 102

Hart Prime 017E BBS True Justice B10  
 Hart Miss 098C  
 Hart Miss 193E TNGL Black Label C829  
 Hart Miss 400Y

*Homozygous Polled*  
*Homozygous Black*

EPDs															
CE	BW	WW	YW	ADG	MCE	MM	MWW	STAY	DOC	CWT	YG	MARB	BF	REA	API
11	2.2	84	130	.29	6	30	72	17	9.3	27.6	-.48	.08	-.114	.86	131

Rank	25	20	15		10	10					25		10		30
------	----	----	----	--	----	----	--	--	--	--	----	--	----	--	----

• **Dam Ratios: BW 2@102 & WW 2@106**

HART 137H is a mirror image of Hart Prime 017E that was a sale topper in 2018 making his home in Montana at Emmons Simmental Ranch, he is a credit to moderate birth calves that take off from the start and get a quick start to lay in all those lbs. Our first AI sons and daughters hit the ground in early Feb. and took off and didn't look back. Hart 137H is going to follow that same way and hit the ground running.

LOT  
65

## Hart 164H

**Homozygous Black Homozygous Polled Purebred**

ASA#372712 Tattoo: 164H Birth: 2-25-20  
 Act. BW: 71 Twin Adj. WW: 752 WW Ratio: N/A

Hart Prime 017E BBS True Justice B10  
 Hart Miss 025D Hart Miss 098C  
 Hart Miss 025D Hart 019A  
 Hart Gold Mine Lass S019

*Homozygous Polled*  
*Homozygous Black*

EPDs															
CE	BW	WW	YW	ADG	MCE	MM	MWW	STAY	DOC	CWT	YG	MARB	BF	REA	API
11	2.4	83	131	.30	7	29	70	16	10.2	33.9	-.50	.02	-.123	.93	125

Rank	25	20	15	35	15	15				35	15		2		
------	----	----	----	----	----	----	--	--	--	----	----	--	---	--	--

• **Dam Ratios: BW 2@111 & WW 2@104**

What a super set of credentials this Prime bull brought up and he is a twin!! Hart Miss 025D fed both babies like a champ, but we lost his brother later on, but we can all appreciate fine cattle and this guy will be no exception to that rule... he is solid for days, stout as a truck with a huge middle and uniform in his balance.



## Sons of Oval F Flash F833

**Heterozygous Black Homozygous Polled Purebred** ASA#3465814 Tattoo: F833 Birth: 2-7-18  
**Hook's Baltic 17B x Oval F Ali A317**

EPDs														
CE	BW	WW	YW	ADG	MCE	MM	MWW	STAY	DOC	CWT	YG	MARB	BF	REA
11	1.8	81	128	.30	6	18	58	19	13.6	34.8	-.32	.46	-.077	.72

Flash came out of the Oval F program and goes back to Baltic and Top Grade on his bottom side, where he has a cool look all on his own with some serious transitional features and was a no miss for us. There is no question about putting him with a fresh set of ladies next year.



## Hart Flash Gordon 231H

**Black Homozygous Polled Purebred**

ASA#3727580 Tattoo: 231H Birth: 3-8-20  
 Act. BW: 90 Adj. WW: 825 WW Ratio: 105

*Homozygous Polled*

EPDs														
CE	BW	WW	YW	ADG	MCE	MM	MWW	STAY	DOC	CWT	YG	MARB	BF	REA
6	4.3	84	128	.27	3	21	62	19	10.8	26.8	-.32	.29	-.075	.63

Rank	25	20	25	15	15	35	30
------	----	----	----	----	----	----	----

Hook's Baltic 17B  
 Oval F Flash F833  
 Oval F Ali A317  
 Hart Eclipse 510Y  
 Hart Miss 378A  
 JDJ Rich And Rare 125

When it comes to talking about our Eclipse embryo sisters, how much time do you have? They continue to demand attention to their standouts and 378A's accolades include "Hart Iron Rod 316F", "Hart Hitman 184E", "Hart Miss 141D", that has sold in our past sales. Flash melded so well with our females and Flash Gordon is proud headed, sleek made and angular through his shoulders and neck and simply offers an elite look from every direction and keeps drawing you in for a more detailed evaluation.



Hart Iron Man 316F



Hart Hitman 184E



## Hart 358H

**Black Homozygous Polled Purebred**

ASA#3727326 Tattoo: 358H Birth: 3-24-20  
 Act. BW: 83 Adj. WW: 752 WW Ratio: N/A

*Homozygous Polled*

EPDs														
CE	BW	WW	YW	ADG	MCE	MM	MWW	STAY	DOC	CWT	YG	MARB	BF	REA
11	1.7	75	116	.26	5	21	59	18	12.3	26.3	-.37	.17	-.088	.68

Rank	35	25	35	35	30
------	----	----	----	----	----

Oval F Flash F833 Hook's Baltic 17B  
 Hart Miss 122A Oval F Ali A317  
 OBCC King Pin W42Y  
 Hart Miss X484

358H is a powerfully built bull that has a refinement with a well-shaped foundation, a stout bone, and a well-rounded body mass. He won't be short on power and has the right equipment to get a great job done.



## Hart 401H

**Black Homozygous Polled Purebred**

ASA#3727551 Tattoo: 401H Birth: 3-31-20  
 Act. BW: 74 Adj. WW: 730 WW Ratio: N/A

*Homozygous Polled*

EPDs														
CE	BW	WW	YW	ADG	MCE	MM	MWW	STAY	DOC	CWT	YG	MARB	BF	REA
12	2.0	75	124	.31	6	22	60	20	11.7	32.4	-.33	.28	-.073	.77

Rank	35	30	10	10	20	15	35
------	----	----	----	----	----	----	----

Oval F Flash F833 Hook's Baltic 17B  
 Hart Miss 348D Oval F Ali A317  
 CDI Made Right 353B  
 Hart Miss 186Z

Here is a Flash bull that has some timeless genetics that are super powerful with huge range from birth to yearling spread. Any program can benefit from a herd bull candidate such as this.





## Sons of DJF Trademark D634

**Homozygous Black Homozygous Polled 3/4 SM 1/4 AN**

ASA#3145887 Tattoo: D634 Birth: 2-8-16

**TJ Makers Mark 215Y x Double J Miss Z282**

EPDs																
CE	BW	WW	YW	ADG	MCE	MM	MWW	STAY	DOC	CWT	YG	MARB	BF	REA	API	TI
12	1.1	92	128	.23	8	23	69	17	11.5	48.6	-.23	.11	-.047	.85	128	81

Trademark came to us in 2018 and serviced an exemplary group of heifers for us and gave us such a stellar set of calves such as Hart Benchmark 002F going to Steffan Simmentals. He calves out so effortlessly, we know with the Bolt EPDs it shows a little differently but we couldn't have asked for any better than what he did. His calves are very marketable with great extension, smooth muscle design, and extra deep rib cavity. Can't wait to see what his daughters are going to calf in a couple of weeks look like!!

LOT  
69

## Hart 026H

**Homozygous Black Homozygous Polled Purebred**

ASA#3727553 Tattoo: 026H Birth: 1-30-20

Act. BW: 67 Adj. WW: 770 WW Ratio: N/A

*Homozygous Polled*  
*Homozygous Black*

EPDs																
CE	BW	WW	YW	ADG	MCE	MM	MWW	STAY	DOC	CWT	YG	MARB	BF	REA	API	TI
14	-.1	84	120	.22	7	22	64	16	12.8	38.2	-.33	.09	-.066	.88	134	82
Rank	15	20	25	35	30				30	20					35	25



TJ Makers Mark 215Y  
DJF Trademark D634  
Double J Miss Z282  
W/C Utah 534A  
Hart 350F  
Hart Miss 036B

### • HEIFER BULL CANDIDATE

Trademark sons all carry a splendid sleekness about their front third with ultra-attractive silhouettes, and 026H carries these traits plus a very nice balance and symmetry while maintaining a big foot, strong bone, chiseled look and a robust dimension. He should be a definite selection at the top of your heifer bull short list.

LOT  
70

## Hart 310H

**Homozygous Black Homozygous Polled Purebred**

ASA#3727264 Tattoo: 310H Birth: 3-19-20

Act. BW: 78 Adj. WW: 739 WW Ratio: N/A

*Homozygous Polled*  
*Homozygous Black*

DJF Trademark D634 TJ Makers Mark 215Y  
Hart Miss 068B Double J Miss Z282  
OBCC King Pin W42Y  
Hart Lady Desperado R399

EPDs																
CE	BW	WW	YW	ADG	MCE	MM	MWW	STAY	DOC	CWT	YG	MARB	BF	REA	API	TI
12	.5	75	105	.19	6	22	60	18	11.6	26.9	-.38	.03	-.083	.78	129	75
Rank	35	25						30								

Another complete heifer bull prospect from Trademark that has real cow power Club King influence. There is no denying what Club King did for our program and the whole of the Simmental Industry and this unique breeding piece could do the same for your program. We firmly believe that when it's all said and done, 310H will be producing elite Purebred genetics for years to come.

LOT  
71

## Hart 391H

**Homozygous Black Homozygous Polled Purebred**

ASA#3727533 Tattoo: 391H Birth: 3-29-20

Act. BW: 87 Adj. WW: 797 WW Ratio: 102

*Homozygous Polled*  
*Homozygous Black*

DJF Trademark D634 TJ Makers Mark 215Y  
Hart Miss 324D Double J Miss Z282  
GLS Integrate Z3  
Hart Emily 077A

EPDs																
CE	BW	WW	YW	ADG	MCE	MM	MWW	STAY	DOC	CWT	YG	MARB	BF	REA	API	TI
10	3.6	96	147	.32	6	19	67	15	9.9	54.2	-.36	.05	-.086	1.02	126	84
Rank		3	3	10			25			1				20		20

In our over 50 years of glory to be bringing the absolute very best that we can possibly produce – our memories are of what we accomplished, the friends we have gained, and the accolades we surpassed always are brought forth at this time of year. The great ones always rise to the top and this young Trademark son is going to make his place among the greats. What a commanding set of trait crushing #'s as 3-#1 in what we consider to be the top of what is to be focused on! This Homo Black Homo Polled sale feature is built for the long haul!



LOT  
72

## Hart 405H

**Homozygous Black Homozygous Polled Purebred**

ASA#3727359 Tattoo: 405H Birth: 3-31-20

Act. BW: 71 Adj. WW: 782 WW Ratio: 100

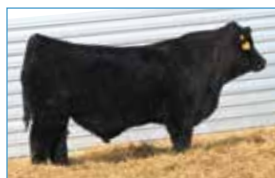
DJF Trademark D634 TJ Makers Mark 215Y

Hart Miss 148Z

Double J Miss Z282

Dillons In Time

Hart Miss X691

*Homozygous Polled*  
*Homozygous Black*

Hart 170F



Hart Silverado 346E



Hart 231D



Hart Rouge Nation 239C

EPDs															
CE	BW	WW	YW	ADG	MCE	MM	MWW	STAY	DOC	CWT	YG	MARB	BF	REA	API
13	.0	76	109	.20	8	26	64	20	11.3	31.9	-.35	.08	-.068	.87	138
Rank															
20	20				20	30	35	15							25

## • HEIFER BULL CANDIDATE

When all the guys say wow, "what a woman", then 148Z is just that. She has produced 5 bulls that were top selling bulls in each of their sire group and the heifer from last year is going to replace her as one of our new Corner Stone females. 405H is going to be a genuine heifer bull candidate recommendation to rival his maternal mates. The formula for laying down superb foundation block determines elite status is all right here for you and all you need to do is pay attention to your gut and ride the ride: Hart 170F, Hart Silverado 346E, Hart 231D, Hart Rouge Nation 236C & Hart 022B.

## Sons of JBS Single Shot 601C

**Homozygous Black Homozygous Polled 3/4 SM 1/4 AN**

ASA#3029617 Tattoo: 601C Birth: 3-17-15

**Gibbs 0689X Crimson Tide x JBS Miss G Design 425S**

EPDs															
CE	BW	WW	YW	ADG	MCE	MM	MWW	STAY	DOC	CWT	YG	MARB	BF	REA	API
9	3.6	73	116	.27	4	26	62	11	12.5	46.5	-.34	.08	-.085	.89	100

Single Shot is a 3/4 blood Crimson Tide son that has incredibly long sided and wide based sons and daughters. They also have a lot of extension in their front end. The daughters we are calving out now have so much middle dimension with a ton of rear flank and extra hip. Their sons have big scrotal development and function to give them the necessary tools to be long lasting herd bulls.

LOT  
73

## Hart Reload 225H

**Homozygous Black Homozygous Polled Purebred**

ASA#3727470 Tattoo: 225H Birth: 3-8-20

Act. BW: 90 Adj. WW: 834 WW Ratio: 106

JBS Single Shot 601C Gibbs 0689X Crimson Tide

Hart Miss 243Z

JBS Miss G Design 425S

New Trend Way Cool 6W

Hart Ms. Crossfire W502

*Homozygous Polled*  
*Homozygous Black*

EPDs															
CE	BW	WW	YW	ADG	MCE	MM	MWW	STAY	DOC	CWT	YG	MARB	BF	REA	API
6	5.8	83	130	.29	2	25	66	12	12.5	50.8	-.42	-.06	-.092	1.13	101
Rank															
	25	20	15				30		35	2				10	

Attractive profiling, big centered, stout featured Purebred son of Single Shot that ties into the massive back and rump of Way Cool. Our Way Cool females put up the goods each and every time giving us all the cow power that has left a positive mark in our program. Reload sets up cleanly on four extra large hooves that carry all of that power all the way from nose to tail.

LOT  
74

## Hart 336H

**Black Homozygous Polled Purebred**

ASA#3727562 Tattoo: 336H Birth: 3-22-20

Act. BW: 83 Adj. WW: 629 WW Ratio: N/A

JBS Single Shot 601C Gibbs 0689X Crimson Tide

Hart Miss 362C

JBS Miss G Design 425S

ES Ridgerider YW3

Hart Miss 439Z

*Homozygous Polled*

EPDs															
CE	BW	WW	YW	ADG	MCE	MM	MWW	STAY	DOC	CWT	YG	MARB	BF	REA	API
9	1.9	60	92	.20	4	23	53	15	10.3	25.0	-.41	.08	-.084	.82	115
Rank															
	7	4.8	75	111	.22	4	26	63	16	15.2	36.5	-.34	.08	-.085	.76

This Single Shot son has really poured it on since weaning and makes a very impressive silhouette that is loud and clear in his proclamation as a bold, big time herd bull prospect

LOT  
75

## Hart 346H

**Homozygous Black Dbl. Polled Purebred**

ASA#3727673 Tattoo: 346H Birth: 3-22-20

Act. BW: 90 Adj. WW: 737 WW Ratio: N/A

JBS Single Shot 601C Gibbs 0689X Crimson Tide

Hart Miss 705Y

JBS Miss G Design 425S

SAS T101 Sweet Meat

Hart Miss E103N S627

*Homozygous Black*

EPDs															
CE	BW	WW	YW	ADG	MCE	MM	MWW	STAY	DOC	CWT	YG	MARB	BF	REA	API
7	4.8	75	111	.22	4	26	63	16	15.2	36.5	-.34	.08	-.085	.76	114
Rank															
						30			10	25					

Here is how cow families tie into each other and keep building a lasting legacy. 346H's Sweetmeat dam is the grand dam to Hart Deadwood 003H a True Justice son that is also offered in our 2021 candidates, who helps give this Single Shot son that different edge with tons of balance.



## Sons of Hart War Load 036F

Homozygous Black Homozygous Polled Purebred ASA#3411892 Tattoo: 036F Birth: 1-25-18

Hart State Of War 056C x Hart Miss 536Z

EPDs															
CE	BW	WW	YW	ADG	MCE	MM	MWW	STAY	DOC	CWT	YG	MARB	BF	REA	API
11	2.0	76	118	.26	5	32	70	21	8.0	42.9	-.41	-.09	-.093	1.00	126

War Lord emerged on the scene in our 2019 sale offering and is a State Of War son that is a dominant force to be reckoned with as he put up his first offering in Montana and impressively lived up to his name. We loved his babies in person and thought he did a stupendous job and had some semen shipped in. He offers a diverse and desired body shape that will work in many different agendas.

LOT 76

## Hart 082H

Homozygous Black Homozygous Polled Purebred

ASA#3727452 Tattoo: 082H Birth: 2-9-20

Act. BW: 71 Twin Adj. WW: 775 WW Ratio: N/A

Homozygous Polled  
Homozygous Black

EPDs															
CE	BW	WW	YW	ADG	MCE	MM	MWW	STAY	DOC	CWT	YG	MARB	BF	REA	API
13	2.0	75	109	.22	6	29	66	18	7.6	27.0	-.42	-.02	-.085	.87	124

Rank

25

15 30 35



Hart State Of War 056C  
Hart War Load 036F  
Hart Miss 536Z  
JF Made In America 210Z  
Hart Miss 228B  
Hart Miss 493Y

Hart War Lord 036F sets up his house in the great state of Montana and is still employed at Emmons Simmental Ranch. He produces the next outcross sires or donors that certainly leave you with a lasting impression of the caliber of cattle known here. 082H should produce a moderate birth calf that jumps into high gear right off the bat and give you a competitive edge.



## Sons of BBS True Justice B10

Homozygous Black Homozygous Polled Purebred ASA#2878160 Tattoo: B10 Birth: 2-23-14

BDV True Grit 11X x BBS Miss Justice Z7

EPDs															
CE	BW	WW	YW	ADG	MCE	MM	MWW	STAY	DOC	CWT	YG	MARB	BF	REA	API
12	.7	87	133	.28	9	31	74	21	14.0	24.1	-.57	.15	-.117	1.01	149

True Justice is a BVD True Grit 11X son who has become one of the breed's top most used #1 calving ease sires in the line up at Genex Coop. He offers unmatched calving ease, streamline build, eye appealing muscle design that is combined with a fault free structure that is setting the standards at the top of the industries categories. The True Justice calves are very easy to spot no matter where they are in our pens or pastures due to their supreme depth of rib, massive rear flank and fantastic leg bone and big hooves. The True Justice heifers that are calving here are having an earlier gestation length, supreme ease of calving, and are some of the most docile females to calf out. It has been a privilege and gives us great pleasure to be able to view the progeny out of standouts such as Hart Prime 017E, who topped our 2018 bull sale to Emmons Black Simmentals and Hart Weaver 088E to Todd O'Bryan and are producing impressive sons and daughters that top the markets time and time again!

LOT 77

## Hart Deadwood 003H

Homozygous Black DbL. Polled Purebred

ASA#3727496 Tattoo: 003H Birth: 1-22-20

Act. BW: 65 Adj. WW: 842 WW Ratio: 108

Homozygous Black

EPDs															
CE	BW	WW	YW	ADG	MCE	MM	MWW	STAY	DOC	CWT	YG	MARB	BF	REA	API
13	1.9	96	145	.30	9	29	77	21	16.1	21.9	-.38	.06	-.088	.67	145

Rank

30

3 4 15 10 15 3 3 5

15 10

BBS True Justice B10

BDV True Grit B10

Deadwood displays second to none genetics that is required in any pedigree and cannot be overstate in anyone's program. His Sweet Meat granddam is highly maternal with 6 females completing a foundation just from her natural matings who have matriculated to hundreds of programs all over the country. He is bold in his rib with added shape to his top and very symmetrical in all angles and will enable him to go the distance.

Hart 278F

BBS Miss Justice Z7

QB Diesel D25

Hart Miss 705Y



## Sons of Hart Custer 095E

**Homozygous Black Homozygous Polled Purebred** ASA#3257097 Tattoo: 095E Birth: 2-19-17

**HL Rebel 435C x Hart Miss 106Y**

EPDs																
CE	BW	WW	YW	ADG	MCE	MM	MWW	STAY	DOC	CWT	YG	MARB	BF	REA	API	TI
8	3.6	82	124	.26	4	32	73	17	11.8	25.9	-.46	.15	-.101	.86	126	79

Custer is a HL Rebel 435C son that was sold in our 2018 sale to Shonka Farms with Hart Simmentals retaining some of the walking rights. He went way and above our grueling demands and sired a set of calves that we are very proud of. They have a lot of extra length and super dimension which allows those extra pounds to lay in effortlessly and capturing maximum performance!



**LOT 78**

## Hart Bighorn 217H

**Black Homozygous Polled Purebred**

ASA#3727307 Tattoo: 217H Birth: 3-7-20

Act. BW: 87 Adj. WW: 868 WW Ratio: 111

*Homozygous Polled*

EPDs																
CE	BW	WW	YW	ADG	MCE	MM	MWW	STAY	DOC	CWT	YG	MARB	BF	REA	API	TI
6	4.6	88	135	.30	4	31	74	19	12.1	35.8	-.49	-.01	-.110	1.02	121	77
Rank		15	10	15		10	5	20		25	20		20	20		

HL Rebel 435C  
Hart Custer 095E  
Hart Miss 106Y  
SKORS Black Enticer 287Y  
Hart Miss 108A  
Hart Ms. Royalfush U658

With genetics that are proven and predictable, it goes without saying that Bighorn will be 108A's crowning glory. His sleek neck transitions into a big bold rib design, flawless in his massive hip and hind leg combination and could go on for days about everything that makes him so special. We just call that elite!



**LOT 79**

## Hart 249H

**Homozygous Black Homozygous Polled Purebred**

ASA#3727621 Tattoo: 249H Birth: 3-11-20

Act. BW: 87 Adj. WW: 814 WW Ratio: 104

EPDs																
CE	BW	WW	YW	ADG	MCE	MM	MWW	STAY	DOC	CWT	YG	MARB	BF	REA	API	TI
5	4.9	77	110	.21	3	32	70	18	11.4	29.2	-.45	.11	-.102	.87	117	73
Rank						5	15	35	20							

Hart Custer 095E      HL Rebel 435C  
Hart Miss 106Y  
Hart Lady Impact W490      SAS Big Impact  
Hart Miss Lewy S483

*Homozygous Polled*  
*Homozygous Black*

With Big Impact exploded onto the scene, he was used to create cattle with more frame and helped solidify our foundation as a Purbred program that concentrated in keeping that larger frame needed in producing individuals that carry that easy fleshing ability to convert pounds into dollars.







## Sons of Mega Watts 019C

**Homozygous Black Homozygous Polled Purebred** ASA#2975627 Tattoo: 019C Birth: 2-5-15  
W/C Utah 534A x SNF Prima Donna A-100

EPDs															
CE	BW	WW	YW	ADG	MCE	MM	MWW	STAY	DOC	CWT	YG	MARB	BF	REA	API
11	1.1	79	107	.17	5	33	72	10	11.4	30.4	-.55	.01	-.115	1.09	111

Mega Watts is a grandson from SSIPRS High Voltage 244X and out of the SNF Prima Donna A-100 cow we purchased out of the Houston Stock Show and Sale. He was used on heifers and produced a set of super stretchy, highly functional, completely balanced group of mostly heifer calves. Semen available at Hart Simmentals.

LOT  
80

## Hart Mesquite 224H

**Homozygous Black Homozygous Polled Purebred**

ASA#3727618 Tattoo: 224H Birth: 3-8-20  
Act. BW: 83 Adj. WW: 852 WW Ratio: 109

Hart Mega Watts 019C W/C Utah 534A  
Hart Miss 474Z SNF Prima Donna A-100  
JF Real World 050X  
Hart Lady Locator S569

*Homozygous Polled*  
*Homozygous Black*

EPDs															
CE	BW	WW	YW	ADG	MCE	MM	MWW	STAY	DOC	CWT	YG	MARB	BF	REA	API
9	2.4	77	109	.20	5	34	72	15	10.0	25.1	-.56	-.02	-.110	1.11	114
Rank															
3 10 3 20 10															

Hart Miss 474Z takes her job very professionally and not lightly as she puts forth her best effort every single year. She makes what she does so effortlessly and packs a punch into every one of her babies. Hart Mega Watts 019C makes us proud of the performance from his sons and daughters over our past sales. Mesquite may be the cherry on the top of their sundae as he puts forth the style and grace from both his sire and dam. Mesquite follows suit with his uniformity from forerib to flank, balance at every angle and is superb in his consistency.



W/C Utah 534A, Grandsire



Hart Sport 206F, Maternal Brother



Hart Made To Order 018D, Maternal Brother

LOT  
81

## Hart 355H

**Homozygous Black Homozygous Polled Purebred**

ASA#3727407 Tattoo: 355H Birth: 3-23-20  
Act. BW: 83 Adj. WW: 758 WW Ratio: N/A

Hart Mega Watts 019C W/C Utah 534A  
Hart Miss 189A SNF Prima Donna A-100  
RFS Direct Force T19  
Hart Black Classic Lady

*Homozygous Polled*  
*Homozygous Black*

EPDs															
CE	BW	WW	YW	ADG	MCE	MM	MWW	STAY	DOC	CWT	YG	MARB	BF	REA	API
13	1.7	72	99	.17	6	29	65	14	11.7	24.6	-.49	.06	-.114	.85	121
Rank															
25 15 30 20 10															

We have a Mega Watts bull that is a moderate, good featured, awesome structured, uniformly balance animal that has all of the right pieces and parts needed to produce predictable functioning cattle.



## Sons of W/C Utah 534A

**Homozygous Black Homozygous Polled Purebred** ASA#2752290 Tattoo: 534A Birth: 3-14-13  
Yardley Utah Y361 x Miss Werning 534R

EPDs															
CE	BW	WW	YW	ADG	MCE	MM	MWW	STAY	DOC	CWT	YG	MARB	BF	REA	API
13	1.2	73	101	.18	4	24	60	9	14.5	25.4	-.47	-.05	-.097	.91	106

Utah has given us some very prominent bulls that have sold in our sales over the years, Hart 280F to Rodney West; Hart Missouri 066E to Scott Braun; Hart 4 Corners 243D to Nesemeier Cattle Ranch; Hart Salt Lake 088C to Tony Phipps; Hart Mega Watts 019C who is a calving ease top bull for Hart Simmentals; Hart Frisky Whiskey 010C to Todd O'Bryan. He sires calving ease prodigy that have delivered proven results since 2016 and are still producing top shelf sons and daughters to this day.







## Hart 251H

Black Homozygous Polled Purebred

ASA#3727536 Tattoo: 251H Birth: 3-12-20  
Act. BW: 83 Adj. WW: 849 WW Ratio: 108

W/C Utah 534A Yardley Utah Y361  
Hart Miss 326D Miss Werning 534R  
WS All-Around Z35  
Hart Ms. Royalflush U355

Homozygous Polled

EPDs																
CE	BW	WW	YW	ADG	MCE	MM	MWW	STAY	DOC	CWT	YG	MARB	BF	REA	API	TI
9	3.0	86	127	.25	4	27	70	13	14.4	36.7	-.42	.05	-.108	.83	118	79
Rank		20	25			20	15		15	25			20			35

The cow family represented by Miss Werning 534R and WS All-Around 235 has made their marks in our industry and 251H has all the indicators of quality and superiority that will command your attention. His look not only delivers on every standpoint and will keep your attention making you analyze every fault free details that he has to bring to the plate.



## Hart 333H

Homozygous Black Homozygous Polled Purebred

ASA#3727660 Tattoo: 333H Birth: 3-21-20  
Act. BW: 83 Adj. WW: 740 WW Ratio: N/A

W/C Utah 534A Yardley Utah Y361  
Hart Miss X632 Miss Werning 534R  
Triple C Agility U48R  
Hart Miss Limit Up R640

Homozygous Polled  
Homozygous Black

EPDs																
CE	BW	WW	YW	ADG	MCE	MM	MWW	STAY	DOC	CWT	YG	MARB	BF	REA	API	TI
8	3.4	69	101	.20	2	17	52	16	12.8	28.3	-.46	-.12	-.108	.84	104	63
Rank									30		35		20			

333H has a practical build, overpowering body mass and maternal function that allows for low input and maximum output.

## Sons of GLF/LLSF McIntock 143F

Heterozygous Black Homozygous Polled Purebred ASA#3492147 Tattoo: 143F Birth: 3-6-18  
Dozer x Star Of Fishingford 143WX

EPDs																
CE	BW	WW	YW	ADG	MCE	MM	MWW	STAY	DOC	CWT	YG	MARB	BF	REA	API	TI
8	4.7	79	121	.26	3	21	60	12	10.6	24.2	-.40	.15	-.080	.81	114	75

McIntock was a much as a find for Justin as he is maybe excluding his mom the hugest John Wayne fanatic and was purchased in the 2019 "The One" sale at the NWSS, the same year we purchased Cholo. He is a Dozer son out of a Star Of Fishingford cow that we sampled on a few select females to get a feel of what he might accomplish. He did exactly what we had hoped he would do and will use him next year on a larger diverse set of females.



## Hart Wayne 261H

Black Homozygous Polled Purebred

ASA#3727223 Tattoo: 261H Birth: 3-14-20  
Act. BW: 83 Adj. WW: 826 WW Ratio: 105

Homozygous Polled

EPDs																
CE	BW	WW	YW	ADG	MCE	MM	MWW	STAY	DOC	CWT	YG	MARB	BF	REA	API	TI
9	4.3	74	107	.21	4	26	62	15	10.0	19.1	-.46	.08	-.092	.84	117	71
Rank						35						35				

GLF/LLSF McIntock Dozer  
Star Of Fishingford 143WX  
Hart Miss 031B Oval F Cool Dude Y56  
Hart Unique Lass T099

This young cool dude dam brought a unique outcross individual that the popular sire selection from GLF/LLSF McIntock offered 2 years ago at "The One" Sale. Wayne is chiseled about his front third, smooth shouldered and get right down into a 3-dimensional ribcage that extends explosively into a massively deep middle.



## Sons of WAGR Fine Line 7052E

Heterozygous Black Polled Purebred ASA#3334863 Tattoo: 7052E Birth: 3-23-17  
TL Bottomline x WAGR Lullaby 703T

EPDs																
CE	BW	WW	YW	ADG	MCE	MM	MWW	STAY	DOC	CWT	YG	MARB	BF	REA	API	TI
9	4.2	65	101	.23	5	20	52	10	4.7	15.1	-.44	.26	-.096	.70	112	70

Fine Line comes to us by way of WAGR Cattle Co. and Effling Cattle Co. in their 2018 bull sale. He is a Bottomline son out of the WAGR Lullaby 703T dam that goes back to the famous Melody cow that has been so dominant and one of their most prolific and has so many champions to her track record! He is very streamline and has extra smooth made muscle dimension, crazy cool neck extension, and sets up on his fine leg and hoof structure perfectly. These four Fine Line sons have a very different look for us as we found a very nice balance of refinement and power.





LOT  
85

## Hart Line Em Up 228H

Black Dbl. Polled Purebred

ASA#3727675 Tattoo: 228H Birth: 3-8-20  
Act. BW: 87 Adj. WW: 822 WW Ratio: 105

EPDs																
CE	BW	WW	YW	ADG	MCE	MM	MWW	STAY	DOC	CWT	YG	MARB	BF	REA	API	TI
9	4.5	76	116	.25	4	20	58	13	6.9	26.8	-.44	.17	-.099	.82	117	74
Rank												35				

WAGR Fine Line 7052E

Hart Miss X753

TL Bottomline

WAGR Lullaby 703T

WS Hallmark T2

Hart Lady Desperado R429

Let's face it, we are not biased when we say our cows are the very best in the industry. Back in our showing days, they led us to 4 Grand Champion banners and too many other awards to mention. This Hallmark queen puts her very best foot forward with standout sale features like "Hart Iron Warrior 057C", "Hart 042B" and "Hart Laredo 178E". Hart Line Em UP has inherited all of her superior traits as one should expect and has a high degree of bone density, added style points on a loose hide that is made to carry an excellent amount of flesh.



Hart Laredo 178E, Maternal Brother



Hart Iron Warrior 057C, Maternal Brother



Hart Mega Watts 019C, Maternal Brother

LOT  
86

## Hart 367H

Black Dbl. Polled Purebred

ASA#(3727244) Tattoo: 367H Birth: 3-25-20  
Act. BW: 90 Adj. WW: 785 WW Ratio: 100

WAGR Fine Line 7052E

Hart Miss 053D

TL Bottomline

WAGR Lullaby 703T

WS Revival

Hart Miss 238A

EPDs																
CE	BW	WW	YW	ADG	MCE	MM	MWW	STAY	DOC	CWT	YG	MARB	BF	REA	API	TI
8	4.7	70	102	.20	4	22	57	13	8.3	10.6	-.47	.14	-.096	.75	110	69
Rank												30				

## • Dam Ratios: BW 3@107 &amp; WW 3@100

This Flash bull's Revival dam has really set up some nice individuals while she has been in production and is oh so maternal lending a certain refinement with excellence in many of the categories necessary to be successful in all genres of the industry.



## Sons of WS Equalizer E1

**Homozygous Black Homozygous Polled Purebred** ASA#3339288 Tattoo: E1 Birth: 1-21-17  
**WS Stepping Stone B44 x WS Ms. Wide Track A32**

EPDs																
CE	BW	WW	YW	ADG	MCE	MM	MWW	STAY	DOC	CWT	YG	MARB	BF	REA	API	TI
10	2.3	70	116	.29	3	21	56	12	6.6	29.5	-.43	.04	-.075	1.02	114	71

This Stepping Stone son literally fell into our laps. We specifically went to the National Stock Show that year with money in our pockets and somehow he ended up not being in the sale but he was later offered at Walsh's spring sale and things just lined up right for us that day. He offers a different avenue for our program combining extreme streamline muscle definition, really cool zipper fronted but with all of that power backing his dimension up! He is a producer that fits into any cattle program bringing progeny that have ideal birth to weaning curve, long spined while capturing maximum performance. These Equalizer sons all have big scrotal development and functionality to give them the necessary tools to be long lasting herd sires.

LOT  
87

## Hart 123H

Homozygous Black Homozygous Polled Purebred

ASA#3727573 Tattoo: 123H Birth: 2-14-20  
Act. BW: 68 Twin Adj. WW: 771 WW Ratio: N/A

WS Equalizer E1

Hart Miss 371Z

WS Stepping Stone B44

WS Ms. Wide Track A32

Dillons In Time

Hart Miss X633

*Homozygous Polled*  
*Homozygous Black*

EPDs																
CE	BW	WW	YW	ADG	MCE	MM	MWW	STAY	DOC	CWT	YG	MARB	BF	REA	API	TI
10	1.7	69	107	.24	4	19	54	16	7.8	22.8	-.43	.05	-.079	.90	121	70
Rank																

A real fresh perspective to the Stepping Stone legacy – 123H is big hipped, rugged in his design, extra skeletal width with an attractive side profile. He will be the next step in keeping and making the next generation great.



This is an unprecedented start to offering an open door to a monumental opportunity of what we have been so proud to have produced in the last 46 years. We are bringing to the sale a diverse array of combos from top producing sires and females that are from the backbone of our program. We have always placed great pride in our females that offer the phenotype necessary to impact future generations of sublime Purebred Simmental cattle and our bulls from past sales have made a great tribute to the females that bring us such pride and joy. With that in mind, welcome to our inaugural induction into the heifer side of life.



## Hart Diamond Paisley 154H

**Black Baldy Dbl. Polled Purebred**

ASA#3727268 Tattoo: 154H Birth: 2-22-20

Act. BW: 84 Adj. WW: 660 WW Ratio: N/A

HTP/SVF Duracell T52  
HPF Right To Love 365D  
RP/MP Right To Love 015U  
W/C Utah 534A  
Hart Ms. Paisley 073D  
Hart Miss 237A

Diamond Paisley is saturated with quality on both sides of her pedigree and is out of a heifer we had broke to show when the girls started in 4-H- Hart Ms Paisley 073D, a Utah daughter. As usual what happens when we attempt to bring back the glory days- our life situation gets in the way, Justin had just had a horrific ranger accident. But life goes on and you can always bring in another fancy lady and we did just that. Paisley has got that wow factor throughout her excellent skeleton, is big footed that supports her big top line and her outward shape.



EPDs														
CE	BW	WW	YW	ADG	MCE	MM	MWW	STAY	DOC	CWT	YG	MARB	BF	REA
10	2.9	82	117	.22	5	21	61	13	8.9	32.4	-.44	.08	-.091	.95
Rank														35



## Hart Heartthrob 064H

**Homozygous Black Homozygous Polled Purebred**

ASA#3727361 Tattoo: 064H Birth: 2-5-20

Act. BW: 71 Adj. WW: 607 WW Ratio: N/A

Hart War Load 036F Hart State Of War 056C  
Hart Miss 149C Hart Miss 536Z  
W/C Utah 534A  
Hart Miss X281

*Homozygous Polled*  
*Homozygous Black*



Hart Four Corners 243D,  
Full Brother

Heartthrob is a striking February War Lord purebred female that has an undeniable presence with a long sleekness up through her front third extruding ultra-femininity. As you evaluate her beauty and balance, she gives from a profile her soft maternal look is second to none. She is fault free and lines up with all the extras tied together with style and grace. She is a full sister to Hart Four Corners 243D, sold to Nesemeir Cattle Ranch.



EPDs														
CE	BW	WW	YW	ADG	MCE	MM	MWW	STAY	DOC	CWT	YG	MARB	BF	REA
11	1.0	69	99	.19	5	28	62	18	10.9	30.9	-.46	-.05	-.104	.91
Rank														20



LOT  
90**Hart Headliner 181H****Black Dbl. Polled Purebred**

ASA#3727507 Tattoo: 181H Birth: 3-1-20

Act. BW: 67 Twin Adj. WW: 656 WW Ratio: N/A

## EPDs

CE	BW	WW	YW	ADG	MCE	MM	MWW	STAY	DOC	CWT	YG	MARB	BF	REA	API	TI
10	2.9	87	135	.30	7	24	68	17	11.9	49.2	-.31	-.02	-.074	.90	124	78
Rank																
		15	15	15	35		20	35		3						



HSR Power Plus D206

Hart Miss 284C

TJ Power Grid 363Y

HSR Ms. Rookie Z751

JF Rancher 222Z

Hart Miss 558Z

Headliner is a March 1st baby girl that also goes back to Power Plus but puts a little different spin on the bottom side to Rancher who we used as a staple here for many years. Headliner is such a head turner and so loaded with impeccable style and sublime elegance, undeniable on 4 very structurally correct legs and 4 huge hooves and not only checks off all the boxes required to produce the fanciest of females and bodes to our commitment to deliver the best that we have to offer!

LOT  
91**Hart Last Haven 203H****Homozygous Black Homozygous Polled Purebred**

ASA#3727653 Tattoo: 203H Birth: 3-5-20

Act. BW: 78 Adj. WW: 742 WW Ratio: 109

## EPDs

CE	BW	WW	YW	ADG	MCE	MM	MWW	STAY	DOC	CWT	YG	MARB	BF	REA	API	TI
8	3.4	81	123	.26	4	24	64	15	12.9	30.8	-.43	.05	-.085	.97	119	76
Rank																
		35	30	35					30					30		

QB Last Frontier F42

Hart Miss 615Z

CCR Frontier 0053Z

QB Ms. Last Call B714

Falcks Trailhand XL2

Hart Miss X182

*Homozygous Polled*  
*Homozygous Black*

This little lady leaves nothing to chance stemming from another cornerstone Trailhand dam that is mainly known for her maternal prowess. The importance of cow families sums up an entire years of hard work, selectiveness, to produce a female that should garner you your next crop of fancy replacements. Last Haven has a beautiful soft structure with great angles and feminine features into a high degree of poise necessary to thrive at any level.

LOT  
92**Hart Miss Kyra 322H****Black Dbl. Polled Purebred**

ASA#3727229 Tattoo: 322H Birth: 3-20-20

Act. BW: 78 Adj. WW: 666 WW Ratio: N/A

## EPDs

CE	BW	WW	YW	ADG	MCE	MM	MWW	STAY	DOC	CWT	YG	MARB	BF	REA	API	TI
8	2.3	84	123	.25	6	24	66	20	10.9	43.5	-.23	.09	-.059	.69	132	78
Rank																
		25	30				30	10		10						

HSR Power Plus D206

Hart Miss 040C

TJ Power Grid 363Y

HSR Ms. Rookie Z751

Welsh's Warsaw 312Z

Hart Miss 119A

As one references successful mating combinations for the perfect pedigree to use in their programs, outcross-functional-correctness-style-balance-and power should and always be your platform. Power Plus has had some extremely impressive bulls in our sales, so why not in the heifer world. Miss Kyra is so blessed with abundant power, grace and style, all while maintaining a smooth sleekness in her clean lines from the tip of her nose following down her top line to her sweeping flank, she defines exquisite elegance!



# OUR 4TH YEAR GIVING AWAY AN OPEN YEARLING HEIFER!

*Hart Give Me A Lotta Love 456H*

**Black Baldy Dbl. Polled Purebred**

ASA#(3727183) Tattoo: 456H Birth: 3-13-20

Act. BW: 80 ET Twin Adj. WW: 823 WW Ratio: N/A

EPDs														
CE	BW	WW	YW	ADG	MCE	MM	MWW	STAY	DOC	CWT	YG	MARB	BF	REA
13	.9	74	106	.20	7	22	59	15	9.5	24.8	-.46	.13	-.098	.88
Rank														
25	35				25						35			



HTP/SVF Duracell T52  
HPF Right To Love 365D  
RP/MP Right To Love 015U  
FBFS Vantage Point 021S  
RS&T American Girl 1Y  
JDJ Rich And Rare 12S



Hart Peppered Steel 457H



Hart Culpepper 458H

What had started out as a thank you gesture to our patrons that have been with us since the start, has now become a tradition and a clear favorite amongst everyone. So as you can clearly see, we take immense pride in our genetics and with our ladies, so we have upped the ante to bring in some big guns! Hart Give Me A Lotta Love 456H is a full embryo sister to our Cholo embryo brothers Hart Peppered Steel 457H and Hart Culpepper 458H featured in our bull section. She was rightly named in the hopes that our great nation heals and embraces a love for all! We feel that families, neighbors, friends, small towns, communities, and our nation need a ray of sunshine and hopefulness! The little sister to the boys is flawless in her extension, neckline, seamless sleek shoulders, lovely sweeping middle rib section and nice full hips. With her chrome makeup attracting your eye right off the bat, she has the goods to fall right in line with her granddam RP/MP Right To Love 015U. So before you let go of a purchase in the sale for just a few extra dollars - remember she goes to anyone who purchases a bull in the sale - it may take only one bull like the first year and last year, but don't give up, she could yours!! Want to see 50 more of these beauties just like her- just ask the boys, they will gladly get you in the mix!



Cholo



HPF Quantum Leap



**Last year's winner  
RYAN WILLIS**



THSF Lover Boy



# STAR STUDDED LINE-UP

*New Herd Bulls at Hart Simmentals!*



*Rockin H Mr. Smokeshow G01*

**Homozygous Black Homozygous Polled Purebred**

ASA#3685348 Tattoo: G01 Birth: 1-15-19

**Hook's Black Hawk 50B x Rockin H Ms. Emmarae**

EPDs														
CE	BW	WW	YW	ADG	MCE	MM	MWW	STAY	DOC	CWT	YG	MARB	BF	REA
13	1.1	100	160	.38	7	20	70	19	15.7	60.7	-.40	.20	-.077	1.3





### Hart Candy Man 470H

**Homozygous Black Baldy Dbl. Polled Purebred**  
 ASA#(3794810) Tattoo: 470H Birth: 2-1-20  
**VCL Foresight x W/C Sazzy 6010D**

EPDs																
CE	BW	WW	YW	ADG	MCE	MM	MWW	STAY	DOC	CWT	YG	MARB	BF	REA	API	TI
11	1.8	81	121	.25	4	16	57	11	8.7	26.0	-.48	.13	-.087	1.03	122	80



### Fields Gunslinger G920

**Heterozygous Black Homozygous Polled Purebred**  
 ASA#3635545 Tattoo: G920 Birth: 1-10-19  
**GLS Declaration D611 x GLS Miss Cut E10**

EPDs																
CE	BW	WW	YW	ADG	MCE	MM	MWW	STAY	DOC	CWT	YG	MARB	BF	REA	API	TI
8	2.0	98	146	.30	4	26	75	14	13.1	50.5	-.35	.37	-.086	.96	142	95



### HILB Maximum Security G218

**Homozygous Black Homozygous Polled Purebred**  
 ASA#3585880 Tattoo: G218 Birth: 2-20-19  
**HILB/SHER Data Breach x HILB/MBCC Ever After**

EPDs																
CE	BW	WW	YW	ADG	MCE	MM	MWW	STAY	DOC	CWT	YG	MARB	BF	REA	API	TI
15	0.1	72	111	.24	8	22	58	12	15.0	19.7	-.46	.11	-.095	.81	127	77





## Hart Most Wanted 083A

**Homozygous Black Homozygous Polled Purebred**  
 ASA#3571195 Tattoo: 083G Birth: 2-2-19  
**GLS Integrate Z3 x Hart Miss 696Y**

EPDs															
CE	BW	WW	YW	ADG	MCE	MM	MWW	STAY	DOC	CWT	YG	MARB	BF	REA	API
7	4.3	109	167	.36	4	26	81	9	9.8	71.6	-.47	-.10	-.104	1.46	105



## Oval F Gravity G912

**Homozygous Black Homozygous Polled 3/4 SM 1/4 AN**  
 ASA#3592615 Tattoo: G912 Birth: 2-1-19  
**Oval F Echo E709 x Oval F Zelda Z213**

EPDs															
CE	BW	WW	YW	ADG	MCE	MM	MWW	STAY	DOC	CWT	YG	MARB	BF	REA	API
13	-1.1	76	117	.26	7	23	60	24	13.8	32.2	-.36	.37	-.074	.85	165




## LHT Main Force 184A

**Homozygous Black Homozygous Polled Purebred**  
 ASA#3593560 Tattoo: 184G Birth: 3-7-19  
**TJ Main Event 503B x BWL Ginger 930Y**

EPDs															
CE	BW	WW	YW	ADG	MCE	MM	MWW	STAY	DOC	CWT	YG	MARB	BF	REA	API
11	1.6	82	121	.24	4	24	65	11	13.1	42.9	-.47	-.10	-.102	1.12	101



HART GENETICS



The SEMEX logo is a red circle. Inside the circle, the word "SEMEX" is written vertically in white capital letters on the left side. On the right side of the circle is a large, stylized white letter "B".

45



# HART SIMMENTALS

Thursday, February 4, 2021  
12:00 Noon at the farm  
2 miles south of Frederick, SD



SELLS AS LOT 1

## POWER BULL SALE



**Eberspacher Ent. Inc.**

2904 County Road 6  
Marshall, MN 56258

*First Class Mail: Time Dated Material!*

FIRST CLASS  
MAIL  
U.S. POSTAGE  
PAID  
MN MAIL