

50th Anniversary Sale

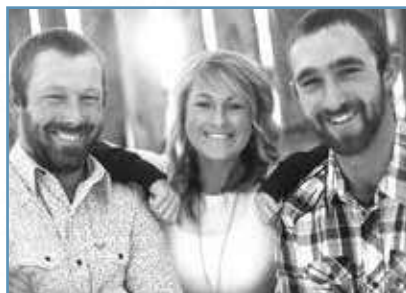


**HART
SIMMENTALS**

Wednesday, February 19, 2025

1:00 PM AT THE FARM 2 MILES SOUTH OF FREDERICK, SD

Welcome to the 50th Annual Hart Simmentals Power Bull Sale!



We are thrilled to welcome you all to our historical 50th Annual Bull Sale!

Another trip around the sun has come and gone, which finds ourselves preparing for the upcoming calving season and our 50th annual bull sale. We hosted our first Simmental cattle in an actual sale in 1975 – up until then we had just been selling as a private treaty producer. Kerry took his first string of show cattle on his own in 1978 - he was just 16 years old. For 47 consecutive years they made their annual trip to one of the most recognized and premier cattle shows in the Northern Hemisphere - "The National Western Stock Show". The first recorded "Black Simmentals" met with much skepticism and scrutiny, but the forward thinkers of this amazing breed were extremely determined and kept their course. The insatiable thirst for this supreme quality continues to be the number one search of consumers and has shown that they are not willing to compromise quality over quantity. In 1996, "Harts Hollywood E707" sold at the Simmental show and sale at the Denver Stock Show for \$60,000.00 which would be the highest selling Simmental bull for the times and would be considered today as \$120,000.00. He was Kerry's pride and joy!!

Our approach in terms of marketability has never strayed, "give the customers what they want"!!! Also, one on one customer service is crucial, demanding that we as producers pay attention in all key areas to produce superior highly dependable seedstock. We have kept this at the top of our list and consider it to be the only way to stand behind our product 100%.

We all have been blessed that the cattle markets have stayed strong all year and shows no signs of receding. This is a huge relief on strained patrons and will hopefully aide them when it comes time to procure new seedstock herd bulls and replacement females. We will stay with our tried and true all video sale concept with DVAuction, so if you have a conflict with attending the sale, we strongly suggest taking advantage of this great service. Also, we will be having the Annual Kerry Hart Memorial Scholarship for the school year of 2024 - please have your submissions to us by June 15th, 2025.

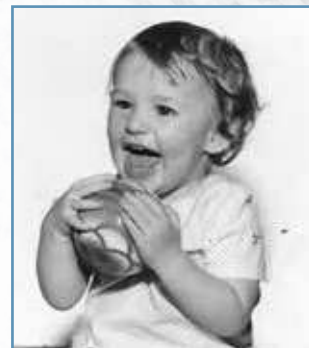
Thank you all for your support and prayers as we went through this very trying year and want you all to know if it were not for your prayers, kindness, and continued support, we were not sure we would have been able to keep Kerry's cattle legacy alive and going- you certainly motivated us and kept our heads afloat-

We thank you from the bottom of our "Hart's"

Mara, Justin, and Jamie



We invite you to take a trip down memory lane with us!





SONS OF ES Solid Gold JG157

Purebred SM ASA#3946405 Tattoo: JG157 Birth: 2/26/21
Act. BW: N/A Adj. WW: 738 WW Ratio: 110

EPDs														
CE	BW	WW	YW	ADG	MCE	MM	MWW	STAY	DOC	CWT	YG	MARB	BF	REA
8	1.7	114	170	.35	4	24	81	16	11.5	49.1	-.10	.71	-.008	.76
Rank														
1	1	1	4				1			5		2		5

TJ Gold 274G Hook's Eagle 6E
TJ 12C
ES G157 WS Proclamation E202
ES A110

☒ **Homo Black**
☒ **Homo Polled**

**Semen
available
at Hart
Simmentals**

2024's calving season started with a resounding bang as Solid Gold's first babies hit the ground and easily demonstrated a wicked amount of frame size and depth from an early age. His breakthrough year would put an exclamation mark behind the work "forerunner" as he cultivated some of the most impeccable and profound results in his debut. The herd sire prospects we showcased in our 2024 bull sale carried a confident presence and intense performance as his group had an average weaning weight of 873lbs. The overwhelming response from our patrons who sampled his genetics were tremendously impressed with the vigorous diligence their purchases showed towards the ladies during their breeding cycles. His 2025 class exhibited that same explosiveness from birth and squashed their predecessor's performance with an over 9lb. increase in weaning with and 880lbs. We eagerly await what we feel will be an extremely positive response as the babies out of Solid Gold's sale highlights from 2024 will hit the calving barn any day now.



HART

**LOT
1**

Hart I Mean Business 016M

Purebred SM ASA#4364474 Tattoo: 016M Birth: 2/3/24
Act. BW: 78 BW Ratio: 102 Adj. WW: 884 WW Ratio: 106

ES Solid Gold JG157
Hart 089K

TJ Gold 274G
ES G157
WHF Epic G804
Hart 019F



TJ Gold 274G, Grandsire

EPDs														
CE	BW	WW	YW	ADG	MCE	MM	MWW	STAY	DOC	CWT	YG	MARB	BF	REA
11	1.5	108	161	.33	5	28	82	17	9.5	53.5	-.12	.49	-.018	.79
Rank														
1	2	10				20	1			3		10		15

☒ **Homo Black**
☒ **Homo Polled**

"I Mean Business" was understandably named with purpose as a tip of the hat towards Solid Gold's standout rookie year. His 2025 offering had an increase of over 9lbs to their weaning weight tally and in our book that is all the proof anyone would need to drive away doubts of him being a top producer. In our book, that along with this year's bull offering averaging a smidge over 880lbs., is all the proof anyone would need and agree he is a force to be reckoned with and has cemented his place in our program. I Mean Business has already turned a lot of heads with his immense depth and dimension, ridiculous big-time figures in his EPD profile, and couldn't be more loaded in his picture-perfect style design, solid testicular development and oozing that "IT" factor. He is for sure going to be a sale highlight.

- **Recommended Heifer Bull**
- **#5th highest weaning weight of the 25' offering**
- **Top 20% in 9 categories- next level EPD profile**
- **Top 1% for WW**
- **Top 2% for YW**
- **Top 1% for MWW**
- **Top 1% for CW**
- **Top 3% for TI**
- **Out of an exceptional Epic first calf heifer**
- **Grand dams Ratios- WW - 5@100, YW - 3@102**



LOT
2

Hart Mine Field 009M

Purebred SM ASA#4364467 Tattoo: 009M Birth: 1/26/24
Act. BW: 78 BW Ratio: 102 Adj. WW: 862 WW Ratio: 104

- ✓ **Homo Black** ES Solid Gold JG157 TJ Gold 274G
- ✓ **Homo Polled** Hart 051K ES G157
- W/C Need 4 Speed 1016H
- Hart 053F

- **Recommended Heifer Bull**
- **Out of a highly maternal Need4Speed first calf heifer, who's State Of War mother has 3 daughters in our program**
- **Top 10% in 5 categories- Outstanding EPD profile- Top 3% for WW, Top 4% in YW, Top 5% for MWW**
- **Actual Weaning Wt 900**

EPDs															
CE	BW	WW	YW	ADG	MCE	MM	MWW	STAY	DOC	CWT	YG	MARB	BF	REA	API
10	.3	100	151	.32	5	26	75	16	1.6	41.4	-.21	.36	-.032	.83	150
Rank															
35	3	4	10			30	5			15		20			25
															5

This set of Solid Gold bulls collectively are just as good if not better than the group that we sold last year. Each one exudes excellent muscle definition with an over abundant frame size. From the first calf to hit the ground, we knew first off, they were going to make a huge explosion. Mine Field is out of a phenomenal Need4Speed female, who for her first time out, packed in a vast amount of muscle mass into this top shelf herd bull prospect. He totes an impressive EPD profile that spreads from his 0.3 BW to a 151 YW. His profile is impeccable from his poll to his tail just like a tight rope that makes you get drawn in- he's like a magnet. He defines the word "Seamless" with his killer look and zipper front. You just can't make a heifer bull candidate anymore correct and dynamite. He's for sure gonna cause an explosion!

LOT
3

Hart 007M

Purebred SM ASA#4364465 Tattoo: 007M Birth: 1/25/24
Act. BW: 83 BW Ratio: 108 Adj. WW: 848 WW Ratio: 102

EPDs															
CE	BW	WW	YW	ADG	MCE	MM	MWW	STAY	DOC	CWT	YG	MARB	BF	REA	API
9	1.9	94	139	.28	4	26	73	19	11.5	35.0	-.38	.38	-.070	.98	154
Rank															
		10	15	30		30	10	15		25		20		30	20
															15

- ES Solid Gold JG157 TJ Gold 274G
- Hart 157K ES G157
- Oval F Flash F833
- Hart Miss 025D
- ✓ **Hetero Black**
- ✓ **Homo Polled**

- **Out of a First Calf Flash Heifer**
- **Grand Dams Ratios- BW - 6@101, WW - 5@101**
- **Top 20% in 7 categories**
- **Hart 016F selling to Backer Land & Cattle in 19' sale**
- **Hart 164H selling to Harvey Henningson in 21' sale**
- **2 Replacement females back into production**



TJ Gold 274G, Grandsire



Hart Lethal 025L, son of ES Solid Gold JG157 that sold in our 2024 Bull Sale

We believe after last year's breakout dynamite sale results from Solid Gold, a "no explanation needed" should sum up how impressed we were with him! He showed that he is no flash in the pan. Every calf from bull calves to heifers showed an incredibly special presence from right off. They have their own individualism to showcase but you can tell in the pen who is a Solid Gold son. Hart 007M is a Hetro Black herd bull prospect that brought his A game.



LOT
4

Hart Golden Ticket 011M

Purebred SM ASA#4364469 Tattoo: 011M Birth: 1/29/24
Act. BW: 80 BW Ratio: 104 Adj. WW: 867 WW Ratio: 104

EPDs																
CE	BW	WW	YW	ADG	MCE	MM	MWW	STAY	DOC	CWT	YG	MARB	BF	REA	API	TI
9	3.0	114	173	.37	4	25	81	17	11.1	54.6	-.35	.47	-.060	1.21	161	107
Rank																
1	1	1	2			1	35			2	15			4	15	1

ES Solid Gold JG157

TJ Gold 274G

✓ Homo Black

Hart 044K

ES G157

Hart Candy Man 470H

✓ Homo Polled

Hart Miss 175D

- Top 15% in 9 categories- Monstrous EPD Profile
- Top 1 % for WW
- Top 1 % for YW
- Top 2% for ADG
- Top 1% for MWW
- Top 2% for CW
- Top 4% for REA
- Top 1% for TI
- Grandams Ratios - BW - 6@102, WW - 6@105, YW - 2@101- Highly Maternal with 5 out of her 6 calves being females!



Hart Candy Man 470H, Grandsire

Your conversation would certainly be very one sided if you're talking about the pros vs cons in Solid Gold and Candyman's performances. They both put an emphasis on the complete package which puts style points and overall substance with uniformity a number one priority. With Hart Miss 175D's extreme maternal traits, you can expect those gorgeous replacements to be the first on your keep list. We have made a revelation that either bull or heifer, these Solid Gold standouts showcase extra large testicular development and heifers putting the spotlight on tremendous udder confirmation with perfect teat size and placement. One thing we have not made easy for you is going to be which one of these sons will be making a trip to your home. We have given you a Golden Ticket to the best performance in town!



HILB Maximum Security G218, Grandsire

LOT
5

Hart 023M

Purebred SM ASA#4364481 Tattoo: 023M Birth: 2/16/24
Act. BW: 83 BW Ratio: 108 Adj. WW: 873 WW Ratio: 105

EPDs																
CE	BW	WW	YW	ADG	MCE	MM	MWW	STAY	DOC	CWT	YG	MARB	BF	REA	API	TI
7	3.3	106	153	.30	3	25	77	12	13.4	46.2	-.30	.37	-.059	.95	137	98
Rank																
1	3	20				3		30	10	20				35		5

ES Solid Gold JG157

TJ Gold 274G

✓ Homo Black

Hart 053K

ES G157

HILB Maximum Security G218

✓ Homo Polled

Hart 036H

- Top 20% in 7 categories - Top Shelf EPD Profile
- Top 1% for WW
- Top 3% for YW and MWW
- Top 5% for TI
- Great Grandam has an excellent track record and has produced many sale highlights in past sales and now resides at Kopfmann Livestock ranch in Huron

This first calf Maximum Security heifer brought us a Solid Gold bull calf that has all the look, body mass, tons of muscle and an impeccable genetic profile. These Solid Gold sons are so consistent in their makeup- allowing the muscle mass and pounds easily transferred onto their frame equally and very well balanced. They sport that all important heavy bone and text book large hoof that is crucial for any program that runs cattle in extensive rocky, hilly and not the nicest of pastures.



LOT
6

Hart Monaco 015M

Purebred SM ASA#4364473 Tattoo: 015M Birth: 2/2/24
Act. BW: 83 BW Ratio: 108 Adj. WW: 893 WW Ratio: 107

EPDs																
CE	BW	WW	YW	ADG	MCE	MM	MWW	STAY	DOC	CWT	YG	MARB	BF	REA	API	TI
9	1.6	96	146	.31	5	26	74	17	12.5	52.7	-.27	.36	-.023	1.23	149	95
Rank																
	5	10	15			30	10			3		20		4	25	10

ES Solid Gold JG157

TJ Gold 274G



Homo Black

Hart 097K

ES G157



Homo Polled

Rockin H Mr. Smokeshow G01

Hart Miss 248C

- Recommended for larger heifers
- 3rd highest weaning weight of our 2025 offering
- Top 15% in 7 categories
- Top 5% for WW and REA
- Top 3% for CW



Rockin H Mr. Smokeshow G01, Grandsire

Proven results are hard to dispute, and Solid Gold has shown in only his 2nd year of production here that his bull group averaged a whopping 880lbs weaning weight- making a 9lbs. increase from last years offering. That is a trend that is quite likely making a yearly appearance and a profitable one that we all can appreciate. Monaco screams genetic perfection with his dominating practically fault free skeletal style, perfect for packing on those extra pounds. His looks differs from I Mean Business 016M in just a few areas but certainly keeping the focus on immense middle dimension and that huge robust hind end quarter that sets up on a tremendous uniform set of running gear.

LOT
7

Hart 029M

Purebred SM ASA#4364487 Tattoo: 029M Birth: 2/19/24
Act. BW: 83 BW Ratio: 106 Adj. WW: 866 WW Ratio: 104

EPDs																
CE	BW	WW	YW	ADG	MCE	MM	MWW	STAY	DOC	CWT	YG	MARB	BF	REA	API	TI
7	2.4	103	156	.33	2	28	79	15	12.9	43.7	-.26	.25	-.048	.88	137	95
Rank																
	2	3	10			20	2		35	10		35				10

ES Solid Gold JG157

TJ Gold 274G



Homo Black

Hart 009K

ES G157



Homo Polled

HILB Maximum Security G218

Hart 013H

- Recommended for larger heifers- Maximum Security was used on heifers
- Top 20% in 7 categories
- Top 2% for WW
- Top 3% for YW
- Top 2% for MWW
- Grandams only calf was 009K- who is a very broody looking cow with a lot of frame- weaning off at 896lbs and having a WW Ratio of 117



Solid Gold's bull calf group exhibits the top 6 bulls having the highest weaning weights of the 25'. That doesn't diminish the performance of the other sire groups as they all have superior standouts as well- it just shows the potential these bulls can transmit into your program. We have heard some very excellent news from a few of our patrons who calve a little early and who put a Solid Gold bull into their lineup.



Hart Monopoly 028M

Purebred SM ASA#4364486 Tattoo: 028M Birth: 2/19/24
Act. BW: 83 BW Ratio: 108 Adj. WW: 884 WW Ratio: 106

EPDs																
CE	BW	WW	YW	ADG	MCE	MM	MWW	STAY	DOC	CWT	YG	MARB	BF	REA	API	TI
11	3.3	104	157	.33	6	25	77	16	12.0	39.1	-.33	.28	-.051	1.01	145	96
Rank																
	1	2	10			35	4			20		30		25	30	10



ES Solid Gold JG157 TJ Gold 274G

ES G157

Hart 067K

CDI Major Impact 280H

Hart Miss 348D

- ☒ **Homo Black**
- ☒ **Homo Polled**

- #6th highest weaning weight in the 25' offering
- Top 15% in 5 categories- excellent EPD profile
- Grandams Ratios - BW - 7@102, WW - 7@100, YW- 4@107; A highly maternal Major Impact female that produced a Flash son selling to Scott Braun in 21' sale and 5 females, one of which was Hart Wish Upon a Star

We think this combination of Solid Gold and Major Impact is a next level beef builder kind of bull. Major Impact is the kind of herd sire that is crossing over into other breeds extremely well, especially in the Angus world. We are pleased that other highly influential cattle programs are seeing his unmatched potential that we knew he possessed. Monopoly has that same potential of being used in other avenues. He should sire a set of females to build a herd around or sire the male counterparts that either deserve to be left as bulls or produce the soggiest set of steers at market time.



Hart 039M

Purebred SM ASA#4364497 Tattoo: 039M Birth: 2/21/24
Act. BW: 85 BW Ratio: 109 Adj. WW: 914 WW Ratio: 110

EPDs																
CE	BW	WW	YW	ADG	MCE	MM	MWW	STAY	DOC	CWT	YG	MARB	BF	REA	API	TI
6	2.9	101	151	.31	3	28	78	15	11.0	53.5	-.26	.34	-.032	1.14	138	95
Rank																
	2	4	15		20	3				3		25		10		10

ES Solid Gold JG157

TJ Gold 274G

ES G157

Hart 032K

LHT Main Force 184G

Hart 039H

- ☒ **Homo Black**
- ☒ **Homo Polled**

- #2nd highest weaning weight bull in the 25' offering
- Top 15% in 7 categories- superior EPD profile
- Out of an impeccable Main Force first calf heifer



LHT Main Force 184G,
Grandsire

Hart 039M showcases unmatched frame size in his extra length and a bit more height allowing this behemoth to easily build up a tremendous amount of weight at weaning time- safe to say he will stay in his lane when it comes time to hit the scales at yearling time. This just so happens to be the case with most of the Solid Gold calf's male or female. They are so vigorous the minute they hit the ground with a very insatiable appetite that proves itself in their weaning data. We believe any breeder seedstock or commercial can appreciate the performance and expect with this grouping. 039M has a robust construction, dense bone mass, sound on a solid square foundation and an effortless ability to convert feed into pounds. It's hard to deny the results when you are staring face to face with it!



Hart 070M

Purebred SM ASA#4364524 Tattoo: 070M Birth: 2/29/24
Act. BW: 76 Adj. WW: 883 WW Ratio: 106

EPDs																
CE	BW	WW	YW	ADG	MCE	MM	MWW	STAY	DOC	CWT	YG	MARB	BF	REA	API	TI
9	-.7	98	141	.27	3	26	75	12	12.9	33.4	-.31	.56	-.048	.91	154	103
Rank																
	20	4	10	35		25	10		35	30		10			20	2

ES Solid Gold JG157

TJ Gold 274G

ES G157

Hart 028K

HILB Maximum Security G218

Hart 057H

- ☒ **Homo Black**
- ☒ **Homo Polled**



Hart State Of War, Great Grandsire

- **Recommended Heifer Bull**
- **Top 25% in 8 categories**
- **Out of a Maximum Security first calf heifer that has some serious performance backed by her State Of War mom!**

This end of February, an actual leap year baby, is a definite calving ease herd sire in the making. He has a perfect body style for ease of delivery, while all along maintaining an exceptional weaning weight. That is how we run our calving ease program, there has to be a darn solid product to go with the calving ease or you're just wasting your time. Hart Miss 028K just threw down a challenge and a resounding thud as that challenge was served and very much exceeded! We will be calving out our very first Solid Gold's mom as we speak and cannot contain our excitement at the prospect of what we are hoping for!



HART



Hart Puttin On The Ritz 032M

5/8 SM 9/32 CS 3/32 AN ASA#4364490 Tattoo: 032M Birth: 2/20/24
Act. BW: 74 BW Ratio: 97 Adj. WW: 808 WW Ratio: 97

EPDs																
CE	BW	WW	YW	ADG	MCE	MM	MWW	STAY	DOC	CWT	YG	MARB	BF	REA	API	TI
10	2.4	107	161	.33	4	23	76	13	11.2	51.2	-.22	.42	-.046	.88	147	101
Rank																
1	2	15				4				10				20	30	2

ES Solid Gold JG157

TJ Gold 274G

☒ Homo Black

Hart 109K

ES G157

W/C Need 4 Speed 1016H

☒ Homo Polled

JMCB Foxy Cleopatra

- Top 10% in 5 categories
- Top 1% for WW, Top 2% for YW and TI, and Top 4% for MWW
- Could be used on larger heifers
- Grandams Ratios - BW - 6@102

Hart 109K, a Need4Speed first calf heifer, just put a stamp on this guy's passport and is sending him to a very special destination. Puttin on the Ritz has got his tuxedo all pressed and dressed for his special debut; and WOW what a tuxedo! The female power behind this easy-going Solid Gold stunner is first class. His grand dam is a Royal Affair daughter that has given us 6 spectacular females that have in turn produced top shelf individuals. When you evaluate this monster you will notice his impeccable profile right off. As you are traveling down his zippered front, his natural eyeline automatically progresses into that deep crater of a belly. His hind quarter is one you have seen often in the Solid Gold group and are as perfect as one can make it. The Solid Gold bulls that have sold have been very well received and they are just getting started. All a person has to decide is -Where his destination will end up-"For Sure Your Place!"



Hart Exxon 045M

Purebred SM ASA#4364503 Tattoo: 045M Birth: 2/25/24
Act. BW: 78 BW Ratio: 102 Adj. WW: 892 WW Ratio: 107

EPDs																
CE	BW	WW	YW	ADG	MCE	MM	MWW	STAY	DOC	CWT	YG	MARB	BF	REA	API	TI
11	2.8	106	158	.33	6	26	78	15	1.7	48.4	-.34	.16	-.062	1.09	139	95
Rank																
1	2	10				30	3			5				15		10

ES Solid Gold JG157

TJ Gold 274G

☒ Homo Black

Hart 185K

ES G157

WCS El Dorado 5209C

☒ Homo Polled

Hart Miss 122D

- 4th highest weaning weight bull in 25' offering
- Top 15% in 7 categories- tremendous EPD profile
- Top 1% for WW
- Top 2% for YW
- Top 3% for WW
- Top 5% for CW
- Probably not suitable for as heifer bull candidate due to the influence of El Dorado has his power packed prowess
- A dynamite performance package

It is so very hard to pick apart these Solid Gold bulls, they just hit on all factors. Their compelling stature, dominant potency, impressive carcass data and fault free development comes together on a superior balanced uniform skeleton. Hart Exxon 045M totes the #4 position on the weaning weight sheet and you can clearly see why. He puts an exclamation point on his abundant length of body and huge middle extension. He has taken the efficiency factor to a whole new level. You can't deny the presence of El Dorado when you evaluate this monster in the flesh and already has the herd bull look about him. All of these boys line up like toy soldiers- each one as equally impressive as the next in line.



HART





WHF Eclipse E35, Grandsire

LOT
13

Hart Gold Boom 051M

Purebred SM ASA#4364508 Tattoo: 051M Birth: 2/27/24
Act. BW: 78 BW Ratio: 100 Adj. WW: 917 WW Ratio: 110

EPDs																
CE	BW	WW	YW	ADG	MCE	MM	MWW	STAY	DOC	CWT	YG	MARB	BF	REA	API	TI
9	2.8	111	166	.34	5	25	80	16	1.8	58.4	-.24	.47	-.043	1.04	157	105
Rank																
	1	1	10			35	1			1		15		20	15	2

ES Solid Gold JG157

TJ Gold 274G

✓ Homo Black

Hart 007K

ES G157

WHF Eclipse E35

Hart 273H

✓ Homo Polled

- #1 weaning weight bull of the 25' offering
- Top 15% in 9 categories- Monstrous EPD profile
- Out of a WHF Eclipse first calf heifer that just made a huge splash in the gene pool
- Great Grandam in a Power Plus female - no surprise on the performance there!

Yep, these Solid Gold bulls are as real as real can get and they are definitely on point! Can you just hear the song playing in the background- "Here comes the BOOM"! Gold Boom's complexity and uniformity that he is generating lends to his immense depth and solid towering foundation. All of these fine features are mashed together giving him his undeniable show stopping physical appearance. He showcases a highly desirable seamless muscle pattern and overwhelming style confirmation. You just can't help but be impressed with his huge spread from his 111 weaning to an outstanding 166 in his yearling log. His #1 is CW and in MWW certainly would be a crucial factor in his sheer performance and rightfully so. In our opinion, he gets that added extra punch of performance from his WHF Eclipse E35 mom. We have been in awe of him ever since he hit the ground.



LOT
14

Hart Gold Fever 087M

Purebred SM ASA#4364541 Tattoo: 087M Birth: 3/4/24
Act. BW: 80 BW Ratio: 103 Adj. WW: 879 WW Ratio: 106

EPDs																
CE	BW	WW	YW	ADG	MCE	MM	MWW	STAY	DOC	CWT	YG	MARB	BF	REA	API	TI
9	3.7	105	160	.35	4	26	78	15	9.8	41.8	-.38	.44	-.060	1.13	151	100
Rank																
	1	2	4			30	3			15		15		10	25	4

ES Solid Gold JG157

TJ Gold 274G

✓ Homo Black

Hart 060K

ES G157

WHF Epic G804

Hart 259G

✓ Homo Polled

- Top 25% in 10 categories
- Out of a superb Epic first calf heifer

We feel you will be hard pressed to search for another set of purebred bull calves that have the amount of power and performance that the Solid Gold bulls possess. They are simply in a league of their own. Can you use the word "raw" and

"pretty" in the same sentence? Well, I found myself saying it repeatedly when we were evaluating the pictures- "Wow, look at his raw power, and look he is so pretty" not sure it is an oxymoron, but Jamie said I said it about 10 times. Gold Fever brings so much natural raw power to the table and still can have that captivating presence in his makeup. Justin really brought his extremely abundant rump to light, and it surely gets your blood pumping when you think of the possibilities that are in his future. You know- like a Fever would!!!

SONS OF *Hart Jaw Breaker* 058K

Purebred SM ASA#4053366 Tattoo: 058K Birth: 2/10/22

Act. BW: 78 Adj. WW: 921 WW Ratio: 11

EPDs																
CE	BW	WW	YW	ADG	MCE	MM	MWW	STAY	DOC	CWT	YG	MARB	BF	REA	API	TI
9	2.2	90	136	.29	5	27	72	12	14.7	39.9	-.33	.16	-.071	.87	125	86
Rank																
		15	15	25		25	15		20	15						30

Hart Candy Man 470H VCL Foresight

W/C Snazzy 6010D

☒ **Homo Black**

Hart Miss 366D

BBS True Justice B10

☒ **Homo Polled**

Hart Miss Hemi T157

**Semen
available
at Hart
Simmentals**



Every year an upstart wanna be herd bull thinks he has got what it takes to impress our very stringent quality control, high standards and be that one that you just can't forget, his image is ingrained in your brain and every time you are in their vicinity your eyes easily wander over to him! Hart Jaw Breaker 058K just so happened to be that young gentleman that we had been hoping for. His sire, Hart Candy Man 470H, a VCL foresight and W/C Snazzy 6010D embryo son, who happened to be Justin's pick when we purchased the pick of the complete 2020 calf crop in Hicks Cattle Co 3rd annual production sale and immediately showed his tremendous potential straight away. Jaw Breaker was our \$40,000.00 high selling bull in our 23' bull sale to Wicks Cattle of Richardton ND. His immense stature and herd bull presence caught many a eye as bull producers witnessed him in the flesh. Jaw Breaker's first crop of flashy herd sire prospects who certainly will be thinking they have what it takes to impress your stringent standards- and make sure you check out his heifer offering, Hart Bette 137M, we are sure they will be ones to pay attention to.



Hart 062M

Purebred SM ASA#4364517 Tattoo: 062M Birth: 2/29/24

Act. BW: 87 BW Ratio: 109 Adj. WW: 870 WW Ratio: 105

☒ **Homo Black**

☒ **Homo Polled**

Hart Candy Man 470H

Hart Jaw Breaker 058K

Hart Miss 366D

WHF Eclipse E35

Hart 002J

Hart 058G

- **Top 20% in 6 categories**
- **Dams Ratios - BW - 2@106, WW Ratio - 2@106**
- **A Solid Gold son selling to Pattensen Livestock in 24'**
- **Hart Miss 058G - our prized "Mr Exclusive" Red female was purchased by Emery Ranch which neighbors close to us and we get the see her frequently**

We love this Jaw Breaker bull; he is a chip off the ole' block and surely brought a power packed package to the table and is backed by a stunning Eclipse female. 062M hits on many wow factors and displays

the added mass and extreme volume just where it needs to be. When you are in the top 5% for carcass weight, it leads to a logical option to inject excellent carcass merit into your next set of feeders or a string of prized females to build your herd around and they'll be the flashiest chromed up beauties in the county.

EPDs																
CE	BW	WW	YW	ADG	MCE	MM	MWW	STAY	DOC	CWT	YG	MARB	BF	REA	API	TI
10	3.0	92	138	.28	5	28	74	14	13.1	45.8	-.39	-.06	-.095	.94	117	81
Rank																
		10	15	30		15	10		35	10			15	35		



Hart 057M

Purebred SM ASA#4364514 Tattoo: 057M Birth: 2/20/24

Act. BW: 87 BW Ratio: 105 Adj. WW: 836 WW Ratio: 101

EPDs																
CE	BW	WW	YW	ADG	MCE	MM	MWW	STAY	DOC	CWT	YG	MARB	BF	REA	API	TI
7	3.2	94	134	.25	4	27	74	17	13.5	43.6	-.42	.10	-.097	.98	129	85
Rank																
		10	20			20	10	30	30	10			15	30		35

Hart Jaw Breaker 058K

Hart Candy Man 470H

☒ **Homo Black**

Hart Miss 366D

Hart 025G

DCR Mr Exclusive E28

☒ **Homo Polled**

Hart Miss 281E

- **Top 25% in 7 categories**
- **Dams WW Ratio- 3@101**
- **A Franchise son selling to Joe Jung in 22' sale**
- **2 fancy replacement females working back in our program**
- **Grandam has produced 4 beautiful females helping promote high maternal production**



Hart Jaw Breaker 058K was purchased in our 23' sale by Zane Wicks and we were tickled to be able to use him in our program as well. He is a Hart Candy Man son whose unmatched extension, dimension and tremendous mass led him to be our 22' sale highlight. His group of bull calves offer the complete package, unlimited breeding possibilities and the type of genetics to get real results.





Hart State Of War 056C, Grandsire

LOT
17

Hart Lockjaw 096M

Purebred SM ASA#4364550 Tattoo: 096M Birth: 3/5/24
Act. BW: 83 BW Ratio: 104 Adj. WW: 867 WW Ratio: 104

EPDs																
CE	BW	WW	YW	ADG	MCE	MM	MWW	STAY	DOC	CWT	YG	MARB	BF	REA	API	TI
11	3.1	90	134	.28	6	27	71	16	13.0	41.5	-.38	-.02	-.078	.99	123	80
Rank																
15		20	30	25		15	35		15	25						

Hart Jaw Breaker 058K

Hart Candy Man 470H

☒ Homo Black

Hart 091J

Hart Miss 366D

☒ Homo Polled

Hart State Of War 056C

Hart 112F

- Top 25% in 5 categories
- A young State Of War 2nd year mamma, really brought a whopper for you this year
- Hart Miss 112F has a WW Ratio of 5@103 and has produced Hart Full Force 072L, a Main Force son, selling to R & C Rohrbach Inc. in 24'
- Hart Smoke Ring 150K, a Smokeshow son, selling to David Kolb in 23' sale
- And 2 superior females, one of whom is Hart Miss 009K, who's Solid Gold son is a top feature in our 25 offering

Hart 096M is our only pairing of Jaw Breaker and State Of War in the offering this year and one that we just can't say enough great things about. State of War has amassed well over 500 in progeny and for a good reason. He has proven predictable profitable results for many seedstock breeders which keeps his semen in extreme demand and making it almost impossible to get. 096M is a explosive centered individual that offers a very attractive profile with his extra bone and substance in a complete balanced package.



LOT
18

Hart 075M

Purebred SM ASA#4364529 Tattoo: 075M Birth: 3/2/24
Act. BW: 87 BW Ratio: 106 Adj. WW: 851 WW Ratio: 102

EPDs																
CE	BW	WW	YW	ADG	MCE	MM	MWW	STAY	DOC	CWT	YG	MARB	BF	REA	API	TI
7	3.6	82	118	.23	4	28	69	11	12.5	34.5	-.39	.02	-.087	.87	108	75
Rank																
35		15		25	30		30									

Hart Jaw Breaker 058K

Hart Candy Man 470H

☒ Homo Black

Hart 173H

Hart Miss 366D

☒ Homo Polled

Hart Custer 095E

Hart Ms Crossfire W195

- Top 35% in 5 categories
- Dams Ratios - BW - 3@108, WW - 2@105
- An Eclipse son selling in our 23' sale
- A Flash daughter selling to Josh Stentoft, and she weaned off a 107 Ratio

This Jaw Breaker son is right in line to become a serious heavy hitter in the substance department and when you have this much maternal power backing you, obvious conclusion is that he will deliver. He is extremely easy to find in the pen as he stands out in all the most favorable ways. As you evaluate him, you are drawn to his depth of body, expressive muscle shape that is always needed when you are selecting your next performance herd sire.

HART
SEMINALS



LOT
19

Hart Neon Nights 088M

Purebred SM ASA#4364542 Tattoo: 088M Birth: 3/4/24
Act. BW: 76 Adj. WW: 839 WW Ratio: 101

EPDs																
CE	BW	WW	YW	ADG	MCE	MM	MWW	STAY	DOC	CWT	YG	MARB	BF	REA	API	TI
12	4.4	97	146	.31	7	29	77	15	12.0	58.8	-.35	.23	-.086	1.06	137	90
Rank																
	4	10	15	30	15	3				1			30	15		20

Hart Jaw Breaker 058K

Hart Candy Man 470H

Hart Miss 366D

Hart 045G

HSR Power Plus D206

Hart Miss 200D

- ☒ Hetero Black
- ☒ Homo Polled

- Top 15% in 7 categories
- Dams WW Ratio- 4@101
- A Need4Speed son selling to Moser Simmentals in 23' sale
- A Maximum Security female ready with her first Jaw Breaker baby really soon, super excited to see the performance in the mating

Neon Nights is a dynamite chromed up Jaw Breaker son that has been on our radar all year. This flashy baldy made us all sit up and take notice right off, one of those babies that knows he is special and shows off to you every chance they get. You know how Jamie and I feel about the baldies and this one is definitely Jamie's favorite as you can clearly see in the videos she has been posting!! We just love and appreciate his seamless straight as an arrow dynamic skeletal design, bold sweeping rib design that seems to never end. The presence of Power Plus on the dam's side helped contribute to his overall power. The Neon sure is shining brightly as to lure you back to his pen every time!



Hart Candy Man 470H, Grandsire

LOT
20

Hart 121M

Purebred SM ASA#4364575 Tattoo: 121M Birth: 3/8/24
Act. BW: 78 Adj. WW: 829 WW Ratio: 100

EPDs																
CE	BW	WW	YW	ADG	MCE	MM	MWW	STAY	DOC	CWT	YG	MARB	BF	REA	API	TI
10	3.4	93	146	.33	5	26	72	16	14.9	32.9	-.30	.10	-.076	.64	131	85
Rank																
	10	10	10			30	15		15	35						35

Hart Jaw Breaker 058K

Hart Candy Man 470H

Hart Miss 366D

Hart 096F

Hart Frisky Whiskey 010C

Hart Ms Directforce W408

- ☒ Homo Black
- ☒ Homo Polled

- Top 15% in 5 categories
- Dams Ratios - BW - 5@102, WW - 5@100
- Has produced 3 phenomenal females
- Hart 194K selling to Bickel Bros. in 23'
- Hart 215L coming with a Distinction calf any day.

This mating of Jaw Breaker and Frisky Whiskey is so exciting, as he was tied with State Of War as our high selling individuals in 2016. He was a Hart Eclipse 510Y son that was purchased by Todd O'Bryan. When you break 121M down and start analyzing his genetic makeup, a couple of things keep circling back around. His robust skeletal design that is extremely hard to get by and his extra length of body, which helps him maintain his perfect balance and uniformity. He will no doubt be the money-making kind for years to come.



Hart Frisky Whiskey 010C,
Grandsire



LOT
21

Hart Jaws 133M

Purebred SM ASA#4364587 Tattoo: 133M Birth: 3/9/24
Act. BW: 71 Adj. WW: 822

EPDs																
CE	BW	WW	YW	ADG	MCE	MM	MWW	STAY	DOC	CWT	YG	MARB	BF	REA	API	TI
11	.7	75	115	.25	6	29	66	14	14.4	31.2	-.39	.39	-.065	.99	141	85
Rank						15	30	20			20			25	35	35

Hart Jaw Breaker 058K

Hart Candy Man 470H

☒ Homo Black

Hart 206J

Hart Miss 366D

☒ Homo Polled

Rockin H Mr. Smokeshow G01

Hart Miss 605Z



Hart 10-4 010L, Maternal Brother



Rockin H Mr. Smokeshow G01, Grandsire

• Top 35% in 7 categories

• This young Smokeshow dam shows some real potential as her first bull calf was Hart 10-4, a Solid Gold son selling to Ashton Hokana

We as breeders can't help but be excited to witness a young females future like this 2nd year mamma has shown. She had delivered another standout individual that has tallied over an 800lbs. weaning weight. As we all fully know that it is critical to our breeding programs future generations to maintain a herd's performance to produce predictable results, or we all would find our selves a new line of work. Hart Jaws 133M has got the length, balance and perfect structural performance to keep your program moving in the right direction for many years to come.



LOT
22

Hart 131M

Purebred SM ASA#4364585 Tattoo: 131M Birth: 3/9/24
Act. BW: 87 BW Ratio: 109 Adj. WW: 828 WW Ratio: 100

EPDs																
CE	BW	WW	YW	ADG	MCE	MM	MWW	STAY	DOC	CWT	YG	MARB	BF	REA	API	TI
10	4.4	98	142	.28	6	23	72	18	11.7	35.1	-.32	.10	-.055	.90	134	86
Rank						4	10	30			15	20		25		35

Hart Jaw Breaker 058K

Hart Candy Man 470H

☒ Homo Black

Hart 035J

Hart Miss 366D

☒ Homo Polled

Hart Bourbon 100F

Hart Miss 013E

• Top 25% in 5 categories

• Dams Ratios - BW - 2@110

• Very young Bourbon 2nd year mamma who is backed by a True Justice dam who has produced a Flash son selling to Dean Seifer in 23'

We can't help but notice the influence of Bourbon in this Jaw Breaker son. He was very well known for the added extra pounds he gave to his calves- it always showed in their overall dimension and added extra pay weight. 131M is a real meat and potatoes individual and if you are needing to add extra weight at weaning time, this guy will fit that bill and aide in that goal.



Hart Bourbon 100F, Grandsire

HART
SMITHS



Hart 176M

Purebred SM ASA#4364630 Tattoo: 176M Birth: 3/16/24
Act. BW: 87 BW Ratio: 109 Adj. WW: 860 WW Ratio: 103

EPDs																
CE	BW	WW	YW	ADG	MCE	MM	MWW	STAY	DOC	CWT	YG	MARB	BF	REA	API	TI
9	3.1	96	142	.28	4	29	77	13	13.6	42.3	-.37	-.21	-.078	.97	107	79
Rank																
		5	10	30		10	3		30	15				30		

Hart Jaw Breaker 058K

Hart Candy Man 470H

☒ **Homo Black**

Hart 023J

Hart Miss 366D

☒ **Homo Polled**

WHF Eclipse E35

Hart 103G

- **Top 25% in 6 categories**
- **Dams Ratios - BW - 2@104, WW Ratio - 2@103**
- **Hart Cold As Ice 012L, a Solid Gold son and Jamie's favorite from last year, selling to Manske Simmentals in 24' sale**
- **Grandam Hart Miss 103G produced Hart Payday 045K, selling to Kaelberer Ranch is 23'**

The kind of performance that is in this pedigree just makes a breeder sit up and take notice. We eagerly awaited the arrival of this Jaw Breaker son and once he got here- oh boy!! We know that Hart Miss 103G has done great things, and we will tease you at bit- as we kept her Main Force son as one of our new herd sires- his babies will be coming any day now. Justin thinks that Hart Miss 023J will most assuredly challenge her mamma to take over her position in our cow program. Hart Cold As Ice 012L made his way down to Oklahoma and his new home (bet he isn't missing this polar vortex cold weather that we always have at this time of year, man I wanna go to Oklahoma!). Hart 176M threw his hat amongst the mix of 25' sale standouts and showed that he has as much muscle mass as any that we have to offer. He is a slam dunk- no brainer choice! This is a slam dunk no brainer for you!!



Hart Cold As Ice 012L,
Maternal Brother



Hart Pay Day 045K,
Grandam's Son



Hart 206M

Purebred SM ASA#4364663 Tattoo: 206M Birth: 3/22/24
Act. BW: 87 BW Ratio: 106 Adj. WW: 786

EPDs																
CE	BW	WW	YW	ADG	MCE	MM	MWW	STAY	DOC	CWT	YG	MARB	BF	REA	API	TI
6	5.6	93	151	.37	3	26	72	11	14.5	48.0	-.27	.22	-.076	.76	120	85
Rank																
	10	4	2			30	15		20	5						35

☒ **Homo Black**

☒ **Hetero Polled**

Hart Jaw Breaker 058K

Hart Candy Man 470H

Hart Miss 366D

Hart 378H

QB Last Frontier F42

Hart Miss 535Z

- **Top 20% in 6 categories**
- **Dams Ratios - BW - 3@101, WW- 3@100**
- **Hart Fat Cat 155K, a Franchise son, selling to Calvin Finnesand in 23' sale**
- **Grandams Ratios - BW - 7@103, WW -7@100, YW -6@102**

This is the only Hetro Polled bull in our 25' offering but that surely doesn't diminish his performance in any way. 206M is the 3rd bull for this Last Frontier female and she just keeps coming up with straight up consistent individuals whether bulls or females. 206M will have many years of service ahead of him, just like his dam and grand dam, who have produced so many past sales highlights.



QB Last Frontier F42, Grand sire



Hart Fat Cat 155K, Maternal Brother

SONS OF CDJ Major Impact 280H

Purebred SM ASA#3801544 Tattoo: 280H Birth: 3/15/20
Act. BW: 75 Adj. WW: 696 WW Ratio: 102

EPDs																
CE	BW	WW	YW	ADG	MCE	MM	MWW	STAY	DOC	CWT	YG	MARB	BF	REA	API	TI
9	3.4	93	144	.31	7	23	70	12	13.0	54.5	-.44	.05	-.059	1.50	121	84
Rank																
	10	10	15				20		35	2	30			1		35

LCDR Impact 134F

CDI Mainline 265D

☒ **Homo Black**

WS Miss Sugar C4

CDI Miss Rimrock 55E

CDI Rimrock 325Z

☒ **Homo Polled**

CDI Miss Apollo 111C

**Semen available
at Hart
Simmentals &
Select Sires**



We are still certain that this name fits this herd sire to a tee! He sired 3 to 1 more heifers than bulls last year which is not a bad thing as you will clearly see when you step into our bred heifer pen. Our own 2024 Foundation heifer "Hart Glass Slipper 164L" is a perfect example of his superior qualities. She is such a beauty with all of the elegance, presence, stature and sophistication an animal can get and just sold at the 2024 Bricktown National Simmental Sale for \$37,000, Congratulations to Bramlet Simmentals! Hart Big Bang 052K who sold to Grant Gilchrist in our 2023 sale is another superior example of Major Impact's power and had depth for days. The individuals selected for our 2024 sale emit the finest qualities. The difference from last year to this year is we have a vast selection to choose from. So put this key breeding option into your rotation and build a program from the ground up.





LOT
25

Hart Constellation 040M

Purebred SM ASA#4364498 Tattoo: 040M Birth: 2/21/24
Act. BW: 83 Adj. WW: 882 WW Ratio: 106

EPDs																	
CE	BW	WW	YW	ADG	MCE	MM	MWW	STAY	DOC	CWT	YG	MARB	BF	REA	API	TI	
10	2.8	99	140	.26	6	23	72	12	13.5	48.3	-.42	-.01	-.086	1.15	118	85	
Rank																	
3		15				15		30		5		30		10		35	

CDI Major Impact 280H

LCDR Impact 134F
CDI Miss Rimrock 55E
Welsh's Warsaw 312Z
Hart Miss X398

- ☒ Homo Black
- ☒ Homo Polled

- Act. WW - 900
- Top 15% in 6 categories
- Dams Ratios - WW - 6@103
- Hart 247L, a Flash son selling to Jerry Barton in 24' sale
- Dam produced 4 very influential powerhouse females working in our program
- Hart Miss 152E is a Welsh's Warsaw daughter- he was the sire of State of War

We are sure the stars were in perfect alignment when Hart Constellation 040M made his big debut. Constellation takes a page right out of Warsaw's playbook with his moderate birth weight but pulls out all the stops and crushes it in the weaning weight department. Ranked 8th out of our 25' offering which just keeps pushing the boundaries in new heights and where we will continue to push for excellence in this area. He is as stout as stout can be with his big broad top, near perfect robust dimension that starts from his poll all the way to his massive hind quarter and sets up perfectly on four rock solid legs and huge hoof development. Let the stars line up for you and push your program to new heights.



LOT
26

Hart 112M

Purebred SM ASA#4364566 Tattoo: 112M Birth: 3/7/24
Act. BW: 83 Adj. WW: 853 WW Ratio: 103

EPDs																	
CE	BW	WW	YW	ADG	MCE	MM	MWW	STAY	DOC	CWT	YG	MARB	BF	REA	API	TI	
9	4.0	94	134	.25	5	21	68	14	16.7	31.6	-.47	-.18	-.072	1.19	108	77	
Rank																	
10		20				25		10		35		20		5			

CDI Major Impact 280H

LCDR Impact 134F
CDI Miss Rimrock 55E
RS&T Shocking Rare A310
Hart Miss 191A

- ☒ Homo Black
- ☒ Homo Polled

- Top 25% in 6 categories
 - Dams Ratios - WW - 8@100
 - Hart 068K, an Upper Hand son selling to Kurt Dickson in 23' sale
 - Hart Fiery Opal, a Cholo daughter selling to Paul Olson in 22'
 - Hart 258F, a Warsaw son, selling to Chris Castello in 19' sale
 - Dam produced 4 heavy hitting females making a great impact in our program
- SOLID bull calf that absolutely changed every time we were in the pastures and at a young age already carried so much style and gaining at a crazy pace. He had a nice moderate birth weight and just poured on the steam all year long and when we brought him in a weaning time - WOWZA! Did he make a statement. There is a real strong maternal dominance in this pedigree and Hart Miss 026C will continue to bring standouts just like 112M. You simply cannot go wrong with this selection of the Major Impact group.



Hart 068K, Maternal Brother



Hart Fiery Opal 208J, Maternal Sister



Hart Trendsetter 053M

Purebred SM ASA#4364510 Tattoo: 053M Birth: 2/27/24
Act. BW: 85 BW Ratio: 103 Adj. WW: 873 WW Ratio: 105

EPDs																
CE	BW	WW	YW	ADG	MCE	MM	MWW	STAY	DOC	CWT	YG	MARB	BF	REA	API	TI
10	3.0	90	133	.27	5	25	70	15	11.2	53.7	-.41	.03	-.082	1.20	122	81
Rank																
	15	20	35			35	20			2			30	5		

- ☒ **Homo Black**
- ☒ **Homo Polled**

LCDR Impact 134F
CDI Major Impact 280H
CDI Miss Rimrock 55E
DCR Mr Exclusive E28
Hart 061G
Hart Miss 094D

- **Top 20% in 5 categories**
- **Top 2% for CW**
- **Dams Ratios - BW - 4@105, WW- 4@105, YW- 4@102**
- **Hart 029J, an Eclipse son selling to Darwin Eichenberg in 22' sale**
- **Dam produced 2 performance driven cows**
- **Hart Miss 061G is a Mr Exclusive E28 daughter, who we saw tremendous results from his first crop of babies, but we lost him when he got sick at the stud and passed, but his females are top shelf.**



HART

Trendsetter, a Major Impact son that we feel will shatter what a trend is supposed to be and write his own story. He is so even in his angles no matter what direction you study him from. He has so much natural muscle mass, a test book square skeletal frame along with his superior leg density and huge hooves making him a triple threat. Trendsetter is headed in the perfect direction and has wicked potential to sire a leg slapping set of herd sire prospects, or a set of feeders that will convert feed quickly or females to start your own dominating group to build up your herd.



Hart 169M

Purebred SM ASA#4364623 Tattoo: 169M Birth: 3/13/24
Act. BW: 87 BW Ratio: 105 Adj. WW: 792 WW Ratio: 95

EPDs																
CE	BW	WW	YW	ADG	MCE	MM	MWW	STAY	DOC	CWT	YG	MARB	BF	REA	API	TI
9	1.8	81	114	.20	5	27	67	17	11.6	32.1	-.57	-.03	-.084	1.42	121	77
Rank																
						25	30			35	1		30	1		

CDI Major Impact 280H

LCDR Impact 134F
CDI Miss Rimrock 55E
WHF Eclipse E35
Hart Miss 367E

- ☒ **Homo Black**
- ☒ **Homo Polled**

- **Top 35% in 6 categories**
- **Top 1% for YG and REA**
- **Dams Ratios - BW - 4@102, WW - 4@105, YW - 1@102**
- **Hart 009J, a Main Force son, selling to Kevin Horihan in 22' sale**
- **Dam produced 2 rock solid females working back in our program**
- **Hart 144G, an Eclipse female just keeps on bringing proven results every year.**

Hart 169M is a mid-March son and is very functional at every turn and uniquely crafted in all the key areas to make that perfect breeding piece your operation needs. He is very stout, loose hided and soft made with an impressive overall dimension and gets out and moves with superior balance.



HART



Hart 009J, Maternal Brother



Hart 177M

Purebred SM ASA#4364631 Tattoo: 177M Birth: 3/16/24
Act. BW: 85 BW Ratio: 104 Adj. WW: 818 WW Ratio: 98

EPDs																
CE	BW	WW	YW	ADG	MCE	MM	MWW	STAY	DOC	CWT	YG	MARB	BF	REA	API	TI
9	3.7	83	119	.23	6	26	67	18	8.1	21.8	-.59	.06	-.097	1.24	127	78
Rank																
	35					30	30	20			1		15	3		

CDI Major Impact 280H

LCDR Impact 134F
CDI Miss Rimrock 55E
Hart State Of War 056C
Hart Miss 232C

- ☒ **Homo Black**
- ☒ **Homo Polled**

Hart 139H

- **Top 30% in 7 categories**
- **Top 1% for YG**
- **Top 4% in REA**
- **Dams Ratios - BW - 3@101, WW - 3@101, YW - 1@103**
- **Hart 100L, a Main Force son, selling to Sean Johnson in 24'**
- **Hart 084K, a Maximum Security son, selling to Jaden Wolff in 23' sale**
- **This State Of War daughter is a bull making machine with all three of her babies being bulls**

Putting all the focus on his own individual performance, this Major Impact / State Of War son that may be Hart 139H's best bull to date. He gets a jump start with his very symmetrical well-balanced style. He is surely stout made and will be a super solid choice when you are needing to elevate your program in any of the traits you need improvement in.





Hart 178M

Purebred SM ASA#4364632 Tattoo: 178M Birth: 3/17/24
Act. BW: 83 BW Ratio: 104 Adj. WW: 809 WW Ratio: 97

EPDs																
CE	BW	WW	YW	ADG	MCE	MM	MWW	STAY	DOC	CWT	YG	MARB	BF	REA	API	TI
12	-1	82	125	.27	7	24	65	12	7.2	26.4	-.40	.33	-.044	1.11	139	88
Rank	25	35	35	35								25		10		25



LRS Elevate 213B, Grandsire

LCDR Impact 134F
CDI Major Impact 280H
CDI Miss Rimrock 55E
LRS Elevate 213B

Hart 052J

Hart 186G

- ☒ **Homo Black**
- ☒ **Homo Polled**

- **Top 35% in 7 categories**
- **Dams Ratios - WW - 2@103**
- **An Excellent showing for this Elevate daughter weaning off 2 bulls over 800lb. We'll take a whole herd of those results**

The Major Impact grouping this year has doubled over the last 2 years, sometimes you just get more females than bull calves, and a person needs those years at times to maintain or add to your female program. This group of herd bull prospect give you a vast array of choices and will not make your selection an easy one. They are going to work in any environment you happen to need and give you some really impressive results- he does for us, so we don't see why any one of them won't do that for you. Major Impact is crossing the breeding lines into other areas and we have seen what he can achieve for other seedstock providers and they are benefiting from his obvious power and confirmation.



Hart 163M

Purebred SM ASA#4364617 Tattoo: 163M Birth: 3/13/24
Act. BW: 85 BW Ratio: 102 Adj. WW: 778 WW Ratio: 94

EPDs																		
CE	BW	WW	YW	ADG	MCE	MM	MWW	STAY	DOC	CWT	YG	MARB	BF	REA	API	TI		
8	5.2	89	137	.30	5	24	69	12	13.4	52.8	-.45	-.08	-.090	1.26	106	76		
Rank	15		15		20		25		30		3		25		30		3	

CDI Major Impact 280H

Hart 356F

LCDR Impact 134F
CDI Miss Rimrock 55E
QB Diesel D25
Hart Ms Trailblazer U402

- ☒ **Hetero Black**
- ☒ **Homo Polled**

Hart Shark Tank 106L that sold to Marcus Beck in last years sale is a maternal brother to this Impact/Diesel son. Now do not let his 798lb. weaning weight fool ya- that is only 2 lbs. off a 800lbs weaning performance. 163M has that same patterned look as his brother and is super sharp in his design and will definitely compliment any female. He's big framed with a tremendous amount of linear extension, impressive depth and will definitely be worth your time to make the trip and evaluate him in person. We are sure he will be making your short list.



Hart Shark Tank 106L,
Maternal Brother

- **Top 25% in 7 categories**
- **Dams Ratios - BW - 5@104, WW - 5@101, YW - 2@103**
- **Hart Shark Tank 106L, selling to Marcus Beck in 24' sale**
- **Hart 005H, a Franchise son, selling to Ronald Thoreson in 21' sale**



Hart 098M

Purebred SM ASA#4364552 Tattoo: 098M Birth: 3/5/24
Act. BW: 85 BW Ratio: 106 Adj. WW: 834 WW Ratio: 100

EPDs																		
CE	BW	WW	YW	ADG	MCE	MM	MWW	STAY	DOC	CWT	YG	MARB	BF	REA	API	TI		
8	3.9	92	135	.27	4	20	67	12	13.5	36.9	-.49	-.01	-.091	1.17	112	80		
Rank	10		20		35		30		30		20		10		15		10	

CDI Major Impact 280H

Hart 042J

LCDR Impact 134F
CDI Miss Rimrock 55E
LHT Main Force 184G
Hart 053G

- ☒ **Homo Black**
- ☒ **Homo Polled**

- **Top 25% in 6 categories**
- **Dams Ratios - BW - 2@103**
- **A young Main Force granddaughter that has produced 2 top shelf bulls for us.**
- **Grandam is a True Justice/Integrate female who gave us Hart Wanda 234J, selling to Sorenson Ranch in 22'**

This Homo Black Homo Polled son of Major Impact started off in the right direction and keeps in the fashion of dense muscle definition. He showcases enormous skeletal development that certainly has the perfect set of running gear under him to support that fabulous 834lb. weaning weight. When we refer to power on power, 089M is a perfect example of what we are speaking of- True Justice and Integrate-two of the game changers when it came to sheer raw performance! 098M showcases his own boat load of great attributes in his long liner extension, smooth construction, ultra-flexibility and already emanates that herd bull look.



LHT Main Force 184G, Grandsire



Hart 123M

Purebred SM ASA#4364577 Tattoo: 123M Birth: 3/8/24
Act. BW: 76 Adj. WW: 827 WW Ratio: 100

EPDs																
CE	BW	WW	YW	ADG	MCE	MM	MWW	STAY	DOC	CWT	YG	MARB	BF	REA	API	TI
11	3.2	89	134	.28	6	26	70	16	14.8	37.0	-.41	.08	-.061	1.15	129	82
Rank		20	20	30		25	20		20	20				10		

- ✓ Homo Black
- ✓ Homo Polled

CDI Major Impact 280H LCDR Impact 134F
 CDI Miss Rimrock 55E
 Hart 149H QB Last Frontier F42
 Hart Miss 395E

- Top 25% in 7 categories
- Dams Ratios - WW - 2@101, YW - 1@100
- Excellent Last Frontier female with and exemplary utter

We simply love our Last Frontier females it surely didn't make a difference when it came to weaning time. This Major Impact son was a touch more moderate in his birth weight but is surely didn't make a difference when it came time to wean-he was right in line with the rest of the gang. 123M is the only pairing of Last Frontier and Major Impact in our 25' offering, but what a powerful pairing that was. He is so correct in his makeup and exhibits large rib dimension and text book hind quarter.



Hart 228M

Purebred SM ASA#4364685 Tattoo: 228M Birth: 3/31/24
Act. BW: 85 BW Ratio: 102 Adj. WW: 787

EPDs																
CE	BW	WW	YW	ADG	MCE	MM	MWW	STAY	DOC	CWT	YG	MARB	BF	REA	API	TI
9	4.2	76	115	.25	5	23	61	17	8.9	33.8	-.52	.02	-.076	1.33	119	72
Rank								30		30	5			2		

CDI Major Impact 280H LCDR Impact 134F
 CDI Miss Rimrock 55E
 Hart 130F R&R Platinum D135
 Hart Ms Dreammaker U442

- ✓ Homo Black
- ✓ Homo Polled

- Top 2% in REA
 - Dams Ratios - BW - 5@100, WW - 5@100, YW - 2@100; (the 100's seems like the best formula)
 - Hart Stardust 266L, and Epic daughter, selling to Koeplin Simmental Ranch in 24' sale
 - Hart High Country 136H, a Franchise son, selling to Rick and Lisa Rau in 21' sale
 - Dam has produced 2 females, one of which has a Solid Gold heifer who ratioed in BW @108 and WW @105, we love those #'s
- Hart 228M is a unique bull calf with a really nice spin on his pedigree with a Platinum daughter on the bottom side. This marriage with Impact gave a long made, growthy big, bodied individual that will be a very versatile breeding piece. He has a lot of ultra-feminine maternal power in his history, so we feel the females from this guy are going to be something special.



Hart Stardust 266L,
Maternal Sister



Hart 238M

Purebred SM ASA#4364695 Tattoo: 238M Birth: 4/9/24
Act. BW: 83 BW Ratio: 102 Adj. WW: 780

EPDs																
CE	BW	WW	YW	ADG	MCE	MM	MWW	STAY	DOC	CWT	YG	MARB	BF	REA	API	TI
9	3.2	91	139	.30	5	20	66	17	15.3	38.7	-.50	.09	-.112	1.07	131	84
Rank		15	15	20			35		15	20	10		2	15		

CDI Major Impact 280H LCDR Impact 134F
 CDI Miss Rimrock 55E
 Hart 423H Oval F Flash F833
 Hart Miss 134C

- ✓ Homo Black
- ✓ Homo Polled

- Top 20% in 8 categories
- Dams Ratios - BW - 3@100, WW - 3@101
- Flash dam that produced Hart 174K, a Franchise daughter that has (211M in this years offering who weaned off at 864) and produced and Epic son last year who weaned at 852 but had a slight limp right before our sale and had to pull him.

Hart 238M has about everything a producer would need to produce individuals that showcase an abundance of center rib shape and tons of extension through the whole of their skeletons. Certainly, has the history in his pedigree to say the same thing. So if you are needing some extension length brought in, this guy will really fit that bill.



CDI Major Impact
280H, Sire



Oval F Flash F833,
Grandsire



SONS OF HLTS/CLRTWR *Always On Time* K4

Purebred SM ASA#4158793 Tattoo: K4 Birth: 1/1/22
Act. BW: 94 Adj. WW: 865 WW Ratio: N/A

EPDs															
CE	BW	WW	YW	ADG	MCE	MM	MWW	STAY	DOC	CWT	YG	MARB	BF	REA	API
12	3.0	103	167	.40	6	27	78	17	16.1	65.9	-.16	.43	-.058	.77	159
Rank															
2	1	1				20	3	35	10	1		15			15

ES Right Time FA110-4
Welshs Dew It Right 067T
ES A110

WS Miss Sugar C4
CLRS Grade-A 875 A
WS Anise A71

- ☒ **Homo Black**
- ☒ **Homo Polled**

**Semen
available
at Hart
Simmentals**



We had been researching and combing the progeny out of ES Right Time FA110-4 as a new potential herd sire candidate. We have seen better than solid results in performance and were overly impressed with the extra dose of frame size that they exhibited. Always On Time K4 came on our radar at the perfect time and felt he was the ultimate herd bull to compliment the cow power we have. What he transmitted into his calves is a tremendous amount of length and extended frame size with an overabundant amount of muscle mass. We can't say enough good things about these bulls, you'll want to evaluate them for yourself, you won't be disappointed.



HART

**LOT
36**

Hart Its About Time 105M

Purebred SM ASA#4364559 Tattoo: 105M Birth: 3/6/24
Act. BW: 92 BW Ratio: 110 Adj. WW: 872 WW Ratio: 105

EPDs															
CE	BW	WW	YW	ADG	MCE	MM	MWW	STAY	DOC	CWT	YG	MARB	BF	REA	API
8	4.7	105	176	.45	5	25	77	19	13.6	68.4	-.18	.25	-.052	.92	147
Rank															
1	1	1				4	15	30	1		35			30	15

HLTS/CLRWTR Always On Time K4 ES Right Time FA110-4
WS Miss Sugar C4
Hart 265F
HSR Power Plus D206
Hart Miss New Design S50

- ☒ **Homo Black**
- ☒ **Homo Polled**

- **Top 15% in 7 categories**
- **Top 1% for WW, YW, ADG and CW**
- **Top 3% for MWW**
- **Dams Ratios - BW - 5@103, WW - 5@101**
- **Hart 288L selling to Richards Ranch in 24'**
- **Hart 222K selling to Larsen Farms in 23'**



ES Right Time FA110-4, Grandsire

Its About Time 105M's potential is about to blow the lid clean off the boiling pot! Let's put the obvious excitement on the table for discussion first. His explosive EPD profile is 2nd to none- Four #1's in what we consider to be the most poignant traits; weaning weight, yearling weight, average daily gain, and carcass weight. Next lets visit about this brutes skeletal makeup and design. We swear this guy has 2 extra ribs (he is just that long) and how about that frame size, both of which has led him to lay in that muscle mass. You won't be able to miss this guy out in the pen, he is hard to miss. Every bull in the sale offering weaned off over 800lbs except one, his mom is just a touch more moderate than some of our big broody cows. The marriage of Always on Time and Power Plus in this pedigree absolutely didn't disappoint. So invest in some of the very best this industry has to offer and put this powerhouse on your payroll and watch that profit margin rise all the way to the bank.

HART
SIMMENTALS



Hart Nick Of Time 089M

Purebred SM ASA#4364543 Tattoo: 089M Birth: 3/4/24
Act. BW: 78 Adj. WW: 825

EPDs																
CE	BW	WW	YW	ADG	MCE	MM	MWW	STAY	DOC	CWT	YG	MARB	BF	REA	API	TI
11	2.7	88	140	.32	6	25	69	18	12.2	46.9	-.35	.22	-.072	1.00	141	86
Rank																
	20	15	10			35	20	30		10				25	35	30

ES Right Time FA110-4
HLTS/CLRWTR Always On Time K4
WS Miss Sugar C4
SVF Z47 Patch

Hart Miss 200D

Hart Miss X682

☒ Homo Black

☒ Homo Polled

- Top 30% in 9 categories
- Hart 142H, a State Of War son, selling to Harms Farms in 21'
- 5 very productive females raised art 085F selling to Backer Land and Cattle, Hart 045G staying within our own program and is the dam to Hart Neon Nights 088M, Hart 127J staying within our own cow program and Hart 251K who is coming with her first calf here very soon with a Point Proven baby- one of our new herd sires

I am very sure there are many breeders out there that will remember that powerhouse bull SVF Z47 Patch, we were so extremely fortunate to have had the opportunity to run him on our cows and in our pastures. He definitely worked his magic on many prominent females. Hart Miss 200D who is out of Patch, has to be one of the top dams with as high of a maternal internal factory to be able to raise 5 females that are making a big impact for us, keeps bringing her A-game and still acts like she is 3 instead of a 9-year-old. We have kept cows in production well past 15 years and we still at the top of their game. Hart 089M could be the next big producer of a cow herd with the likes of our beloved Hart Miss 200D.



Hart 142H, Maternal Brother



Hart Lifetime 100M

Purebred SM ASA#4364554 Tattoo: 100M Birth: 3/5/24
Act. BW: 87 BW Ratio: 104 Adj. WW: 826

EPDs																
CE	BW	WW	YW	ADG	MCE	MM	MWW	STAY	DOC	CWT	YG	MARB	BF	REA	API	TI
14	2.3	97	161	.41	8	25	73	19	15.2	5.0	-.24	.39	-.049	.88	162	96
Rank																
20		5	2	1	15	35	10	20	15	4		20			10	10

HLTS/CLRWTR Always On Time K4

ES Right Time FA110-4

WS Miss Sugar C4

Hart 007F

BBS True Justice B10

Hart Miss 348D

☒ Homo Black

☒ Homo Polled

- Top 15% in 10 categories
- Top 5% for WW, Top 2% for YW, Top 1% for ADG and Top 3% for CW
- Dams Ratios - BW - 5@103, WW - 5@101
- Hart 207L, a Major Impact son, selling to Hyde Land and Cattle in 24'
- Hart Black Out 044H, an Eclipse son selling to Jade Friesz in 21"
- Produced 2 females to go back into our program

We deliberately threw every single combination of females for Always on Time, sometimes you have it planned out to see what cows will marry to get the best results. We just felt that he was sure bet to handle anything and he certainly rose to that challenge. That is where these 11 sons differ, is in their pedigrees. What really resonated was no matter what- that wonderful height and frame and length came shining through on them all. This True Justice female has not disappointed us on any level and her Always on Time bull calf fits right into the mold. Hart Lifetime 100M is a long bodied, loose hided bull that just keep maturing into a stunner of a herd sire.



Hart Black Out 004H, Maternal Brother



Hart 086M

Purebred SM ASA#4364540 Tattoo: 086M Birth: 3/4/24
Act. BW: 78 Adj. WW: 863 WW Ratio: 104

EPDs																
CE	BW	WW	YW	ADG	MCE	MM	MWW	STAY	DOC	CWT	YG	MARB	BF	REA	API	TI
13	1.1	86	133	.30	8	30	73	20	12.4	58.9	-.06	.33	-.016	.69	155	88
Rank																
30		25	20	20	15	10	10	10		1		25			20	25

HLTS/CLRWTR Always On Time K4

ES Right Time FA110-4

WS Miss Sugar C4

Hart 039H

DJF Trademark D634

Hart 223F

☒ Homo Black

☒ Homo Polled

- Top 25% in 11 categories
- Dams Ratios - BW - 3@103, WW - 3@101
- Hart 241L, a Major Impact son, selling to Grant Gilchrist in 24' sale
- Hart Miss 032K, a Main Force daughter has her own Solid Gold bull calf in our 25' offering

Right out of the gate, Always on Time, had a lot to prove and if his first group is any indication of what we can expect to see from him going forward, then we have hit a home run. If you're looking for cow power, well this lady needs no introduction, WS Miss Sugar C4 is the hottest ticket in the breed right now. In the short seven years she has been in production, she has amassed over 236 progenies. 086M's incredibly young Trademark dam has brought her best into this whopper and has stamped her ticket to hopefully one day be as astute as Sugar is. What Hart 086M brings to the table is extra frame in his length and height- all of these Always on Time bull possess this same attribute. It is what helps them in that important high weaning weight they all have, and it is what sets them apart from many of the mainstream that is out there.



Hart 241L, Maternal Brother



WS Miss Sugar C4, Grandam





Hart Pure Gold 021L, Maternal Brother



QB Last Frontier F42, Grandsire

LOT
40

Hart Good Times 210M

Purebred SM ASA#4364667 Tattoo: 210M Birth: 3/24/24
Act. BW: 90 BW Ratio: 112 Adj. WW: 822

EPDs																
CE	BW	WW	YW	ADG	MCE	MM	MWW	STAY	DOC	CWT	YG	MARB	BF	REA	API	TI
10	5.2	98	155	.36	4	29	78	15	15.9	63.8	-.18	.22	-.047	.90	133	88
Rank																
	4	3	3			15	3			10	1					25

HLTS/CLRWTR Always On Time K4

ES Right Time FA110-4
WS Miss Sugar C4
QB Last Frontier F42
Hart Miss 021C



Homo Black



Homo Polled

Hart 348J

- Top 25% in 8 categories
 - Top 3% for WW, YW and ADG
 - Top 1% for CW
 - Dams Ratios - BW - 2@100, WW - 2@103, YW - 1@104
 - Hart Pure Gold 021L, a Solid Gold son, selling to Gaston Hornung in 24' sale
- Good things always seem to come in pairs and the pair of bull calves that this young Last Frontier female has given is leaving us with that "I want more" taste in our mouths. Good Times has a striking resemblance to Last Frontier, which Martha Stewart says "It's a Good Thing"! We have shown in many past sales the exemplary examples of what a Simmentals should look like. Good Times gathers the explosiveness of Last Frontier and Sugar's extreme maternal traits and what you end up with is a herd bull prospect that is worthy of your attention. He sure matches up perfectly with his massive EPD profile and we appreciate his natural dense muscle mass and his ultra-streamline package. He certainly makes a bold statement.



Hart Road Block 149L, Maternal Brother

LOT
41

Hart 129M

Purebred SM ASA#4364583 Tattoo: 129M Birth: 3/8/24
Act. BW: 71 Adj. WW: 841 WW Ratio: 101

EPDs																
CE	BW	WW	YW	ADG	MCE	MM	MWW	STAY	DOC	CWT	YG	MARB	BF	REA	API	TI
13	1.3	89	138	.31	7	30	75	17	14.7	42.5	-.34	.28	-.073	.90	149	90
Rank																
	30	15	15	15		10	10	35	20	10		30			25	20

HLTS/CLRWTR Always On Time K4

ES Right Time FA110-4
WS Miss Sugar C4
Mr MLH Directive 19Z
Hart Miss 062B



Homo Black



Homo Polled

- Top 20% in 8 categories
- Dams Ratios - WW - 7@105
- Hart Road Block 149L, a Need4Speed son, selling to Cory Reiser in 24'
- Dam has produced 4 replacement females for us

Mr. MLH Directive 19Z was one of the first baldy herd bulls introduced back into our black program in 2013 from Grass Lunning Simmentals. He always had a soft spot in our hearts and his calves were top notch! 129M is a huge footed bull calf that combines some huge dense bone development, and an overabundance of muscle mass and substance along with a massive amount of his last 1/3. He is a real cowman's kind of bull

HART
SIMMENTALS



Hart 208L, Maternal Brother

LOT
42

Hart 128M

Purebred SM ASA#4364582 Tattoo: 128M Birth: 3/8/24
Act. BW: 78 Adj. WW: 805

EPDs																
CE	BW	WW	YW	ADG	MCE	MM	MWW	STAY	DOC	CWT	YG	MARB	BF	REA	API	TI
13	2.8	94	146	.33	7	25	72	18	14.8	53.6	-.23	.21	-.068	.75	145	89
Rank																
35	10	10	10				15	25	20	2					30	25

HLTS/CLRWTR Always On Time K4 ES Right Time FA110-4

WS Miss Sugar C4

Hart Miss 073E

JBS Single Shot 601C

Hart Miss 164Z



Homo Black



Homo Polled

- **Top 25% in 8 categories**
 - **Dams Ratios - WW - 6@100**
 - **Hart 208L, a Maximum Security son, selling to Zimbelman Ranch in 24'**
 - **Dam has produced 4 top shelf females; Hart Miss 184K, a Flash daughter, selling to Bickel Brother in 23'; the other 3 working hard in our cow program**
- Single Shot was another one of our herd sires expertly known for his sheer size and overall skeletal power and prominence. 128M gives Single Shot a head nod of respect as he should reach his potential in a couple of cycles, it didn't take long for the Single Shot sons to mature into big time performers. 128M will add power to your cow base in terms of extra height for that extra punch and you won't be compromising a single trait- only adding his impeccable genetic profile.

LOT
43

Hart 199M

Purebred SM ASA#4364656 Tattoo: 199M Birth: 3/20/24
Act. BW: 90 BW Ratio: 108 Adj. WW: 861 WW Ratio: 104

EPDs																
CE	BW	WW	YW	ADG	MCE	MM	MWW	STAY	DOC	CWT	YG	MARB	BF	REA	API	TI
11	3.5	97	150	.33	6	28	76	18	12.4	45.9	-.38	.09	-.081	1.03	136	87
Rank																
	5	4	10				15	4	30	10				30	20	25

HLTS/CLRWTR Always On Time K4 ES Right Time FA110-4

WS Miss Sugar C4

Hart Miss 130E

WCS El Dorado 5209C

Hart Gold Mine Lass S019



Homo Black



Homo Polled

- **Top 25 % in 8 categories**
- **Top 5% for WW**
- **Top 4% for YW and MWW**
- **Dams Ratios - BW - 4@104, WW - 3@103, YW - 2@100**
- **Hart Block Buster 270L, an Epic son, selling to Kari Buchholz in 24' sale**
- **Dams has produced 5 bull and 2 separate sets of twins**

We are kicking ourselves for never getting a mature photo of El Dorado in his prime, but if I clearly remember correctly, he would not fit in any chute or alleyway. He was just so powerfully massive. You want a secret to great purebred cattle- never compromise substance and performance. Our demographic is to breed the type of purebred cattle that maximizes their output in terms of growth, dimension and never forget that explosive power. We only bring you the very best that we have the chance to breed and the other ¼ still has to perform well for the markets and last time we looked lbs. still pays the bill. Do yourself a favor, invest in great Simmental genetics and you will never be disappointed.



Hart Block Buster 270L, Maternal Brother



LOT 44

Hart 60 Minutes 236M

Purebred SM ASA#4364693 Tattoo: 236M Birth: 4/7/24
Act. BW: 92 BW Ratio: 115 Adj. WW: 832 WW Ratio: 100

EPDs																
CE	BW	WW	YW	ADG	MCE	MM	MWW	STAY	DOC	CWT	YG	MARB	BF	REA	API	TI
9	5.1	104	166	.39	4	25	77	15	14.8	7.7	-.33	.16	-.087	1.13	134	91
Rank																
1	1	1				35	4		20	1			30	10		20

HLTS/CLRWTR Always On Time K4 ES Right Time FA110-4
WS Miss Sugar C4
Hart 032J LHT Main Force 184G
Hart 057G

- ☒ **Homo Black**
- ☒ **Homo Polled**



ES Right Time FA110-4, Grandsire



LHT Main Force 184G, Grandsire

- **Top 25% in 8 categories**
- **Top 1% for WW, YW, ADG and CW**
- **Top 3% for MWW**
- **Dams Ratios - BW - 2@109, WW - 1@100**

We believe it speaks volumes when a first week of April calf has the power it takes to be measured up against his male counterparts that were born right away and you're seeing all of that potential. Our first baby was born Jan 19th last year, that is a 79 day difference which shows the results that we demand and expect from anyone of our females. 60 Minutes is certainly a bull calf that you love on paper but really fall hard the minute you get to evaluate him in the flesh. He has an eye catching correctness and appeal to go along with all of the power.



LOT 45

Hart 183M

Purebred SM ASA#4364639 Tattoo: 183M Birth: 3/17/24
Act. BW: 87 BW Ratio: 104 Adj. WW: 836 WW Ratio: 101

EPDs																
CE	BW	WW	YW	ADG	MCE	MM	MWW	STAY	DOC	CWT	YG	MARB	BF	REA	API	TI
11	3.2	90	155	.41	6	26	70	16	12.5	49.2	-.31	.08	-.066	.98	133	84
Rank																
		15	3	1		30	20			5				30		

HLTS/CLRWTR Always On Time K4 ES Right Time FA110-4
WS Miss Sugar C4
Hart 342F HSR Power Plus D206
Hart Miss 182B

- ☒ **Homo Black**
- ☒ **Homo Polled**

- **Top 25% in 5 categories**
- **Top 3% for YW, Top 1% for ADG and Top 5% for CW**
- **Hart 161K, an Epic son, selling to Maurie Larsen in 23' sale**
- **Hart 179J, a Main Force son, selling to Calvin Finnesand in 22' sale**
- **Hart 023H, a Franchise son, selling to Ryan Bohl in 21' sale**

What we have found in this Always On Time son, is that he has a common denominator with ITS ABOUT TIME 105M, they both have a Power Plus mother. Hart 183M showcases the same added frame height, extended length, powerful hip structure and is severely stout through that lower one third. He sure has found his own stride and keeps in step with his own fine attributes.



Hart 161K, Maternal Brother



Hart 179J, Maternal Brother



Hart 239M

Purebred SM ASA#4364696 Tattoo: 239M Birth: 4/9/24
Act. BW: 96 BW Ratio: 115 Adj. WW: 849 WW Ratio: 102

EPDs																
CE	BW	WW	YW	ADG	MCE	MM	MWW	STAY	DOC	CWT	YG	MARB	BF	REA	API	TI
8	4.9	87	140	.33	4	23	67	19	14.0	56.0	-.28	.34	-.079	.85	142	85
Rank																
	20	15	10				30	15	25	2		25			35	35

- ✓ **Homo Black**
- ✓ **Homo Polled**

ES Right Time FA110-4
HLTS/CLRWTR Always On Time K4
WS Miss Sugar C4
GLS Integrate Z3

Hart Miss 174E

Hart Ms Trailblazer W411

- **Top 25% in 7 categories**
- **Dams Ratios - BW - 5@106, WW Ratio - 5@102**
- **Hart 220L, a Code Black daughter selling to Josh Stentoft in 24'**
- **Dam as produced 2 fancy females back working in our cow program.**
- **Birth is a bit higher due to the influence of Integrate female**

This Integrate female has never bluffed a day in her life- She shows her pokerhand with much enthusiasm when it is as potent as this cow is! She is a highly maternal female that has lent her hand in building our cow program in the very best of ways. Our consensus for Hart 239M is he has that same superior qualities as his dam does and can help you build the cow herd of your dreams.



GLS Integrate Z3, Grandsire



Hart 224M

Purebred SM ASA#4364681 Tattoo: 224M Birth: 3/30/24
Act. BW: 78 Adj. WW: 764

EPDs																
CE	BW	WW	YW	ADG	MCE	MM	MWW	STAY	DOC	CWT	YG	MARB	BF	REA	API	TI
11	3.1	83	133	.31	5	23	65	18	14.7	33.7	-.23	.17	-.055	.59	137	80
Rank		35	20	15				20	20	30						

HLTS/CLRWTR Always On Time K4 ES Right Time FA110-4
WS Miss Sugar C4
Hart 301H DKSR Hollow Point C66
Hart Miss 141D

- ✓ **Homo Black**
- ✓ **Homo Polled**

- **Top 25% in 4 categories**
- **Hart Homeland 090K, and Maximum Security son, selling to Knecht Farms in 23' sale**
- **Dam produced one female brought back into our cow program.**
- **Grandam has produced 5 top shelf females and 2 prominent bulls sold in past sales with a WW Ratio of 6@105 and has a picture-perfect udder.**

Hart 224M is the bull that I was talking about with the dam that is just a smidge more moderate than the groupmates that Always On Time was paired with. 224M still has that all out powerful thick and heightened frame that all of his paternal brothers share. He ought to make a darn good set of replacements and on his steers with convert easily for those added extra lbs. at weaning time.



Hart Homeland 090K, Maternal Brother

Welcome to Hart Simmentals 50th Anniversary Sale!

The 50th anniversary is a milestone that deserves to be celebrated as a representation of the prosperity, richness, power and happiness that has lasted a lifetime. Congratulations on this event and we have been so fortunate to be with the Hart family for over 30 years. Your journey has created quite a legacy!

Collaborating closely with the Hart family and watching them produce some of the finest purebred Simmental genetics in the world has been a true joy. From day 1, Charlie & Ruth, Kerry & Mara and now Justin along with sister Jamie have developed cattle that are sound starting at the ground up, have the natural

ability to forage on the SD grass and wean off their hard-working mothers with a consistent 800 + weaning weights. Pounds Matter! This offering of Hart bulls is truly impressive both in person and on paper with their genomic enhanced EPD profile making your selection that much easier.

It is not easy getting this firm to let go of females so know that the ladies selected this year are beyond special for the 50th Anniversary Sale. Straight from the "Hart" of the herd, they are the top of the keeper pen having power, performance and bred for longevity. If you ever have time to drive through the Hart pastures, you will

find one impressive set of females and what these heifers will look like in production.

Once again, Congratulations to the Hart Crew-Job well done! Please accept this as a personal invitation to join us on February 19th to celebrate with the Harts. Feel free to reach out to any of us if we can assist you in your selection or answer any questions.

CHEERS TO 50 YEARS!

Val & Lori Eberspacher

Val & Lori Eberspacher
Eberspacher Enterprises Inc.





SONS OF *W/C Need4Speed* 1016H

3/4 SM 1/4 AN ASA#3808253 Tattoo: 1016H Birth: 2/26/20
Act. BW: N/A Adj. WW: 777

EPDs																
CE	BW	WW	YW	ADG	MCE	MM	MWW	STAY	DOC	CWT	YG	MARB	BF	REA	API	TI
13	.1	85	132	.30	6	27	69	110	7.3	34.1	-.44	.32	-.068	1.17	141	91
Rank		25	25	30		30	20				3		20	2		20

Rubys Turnpike 771E

WBF Significant B132

☒ **Homo Black**

K-LER Dolly's Queen 609D

Rubys Miss Cleo 240Z

☒ **Homo Polled**

W/C Executive Order 8543B

GW Miss GPRD 028X

**Semen available
at Hilbrands
Cattle Co.**

Need4Speed proved he is a formidable herd sire that stamps a heavy muscle pattern, strong top line, sleek structure, dense substance of bone and explosive growth into his calves. From the progeny showing up at the 2023 Denver Stock Show and prominent bull sales whom showed amazing results, solidifying him as a herd sire that can be used in every aspect. He creates deep bold sweeping rib areas, ultra flex in leg development, and above average indexes that still boast some of the best in the industry.

**LOT
48**

Hart 102M

Purebred SM ASA#4364556 Tattoo: 102M Birth: 3/6/24
Act. BW: 75 Adj. WW: 831 WW Ratio: 100

EPDs																
CE	BW	WW	YW	ADG	MCE	MM	MWW	STAY	DOC	CWT	YG	MARB	BF	REA	API	TI
16	-2.1	81	124	.27	9	25	65	15	7.8	1.0	-.39	.10	-.052	.81	141	85
Rank		10	10	35	35	35	15			35					35	3



Rubys Turnpike 771E

W/C Need4Speed 1016H

K-LER Dolly's Queen 609D

WHF Eclipse E35

☒ **Homo Black**

☒ **Homo Polled**

Hart 019J

Hart 376G

- **Top 35% in 10 categories**
- **Recommended Heifer Bull**

Calving ease enthusiasts need to stop what you're doing and check out this Need4Speed/Eclipse duo. Hart 102M has made lap after lap, stopping to fuel up every time he comes past the feed bunk. His lightning conversion rate is abundantly noticed and is so dialed in, quickly adding up every single lb. on his impressive carcass! We just love how this potent combo jumps right out at you and grabs your attention with his extra length, gigantic under carriage development, but keeping focus on that all important streamline muscle pattern and ultra-smooth shoulder.



WHF Eclipse E35, Grandsire



K-LER Dolly's Queen 609D, Grandam



**LOT
49**

Hart 139M

Purebred SM ASA#4364593 Tattoo: 139M Birth: 3/10/24
Act. BW: 75 Adj. WW: 809

EPDs																
CE	BW	WW	YW	ADG	MCE	MM	MWW	STAY	DOC	CWT	YG	MARB	BF	REA	API	TI
14	-.3	91	147	.35	6	22	67	12	9.7	47.1	-.33	-.01	-.054	1.09	128	86
Rank		25	25	15	10	4		30		10				15		3

W/C Need4Speed 1016H

Rubys Turnpike 771E

☒ **Homo Black**

Hart 113G

K-LER Dolly's Queen 609D

☒ **Homo Polled**

WHF Eclipse E35

Hart Miss 146E

- **Top 25% in 8 categories**
- **Recommended Heifer Bull**

• **Hart 180J, A Maximum Security son, selling to Calvin Finnesand in 22' sale**
Some of our very best cows have the influence of WHF Eclipse in their pedigree. Ziptie, as we referred to him, worked in any environment and on any female type that we paired him with. 139M should suit any program, calve like a dream, and leave you with a solid product in the end. This is the second young herd sire prospect in this Need4Speed group to have an Eclipse dam backing him and we will surely keep singing their praises.



Hart 180J, Maternal Brother



Hart 114M

Purebred SM ASA#4364568 Tattoo: 114M Birth: 3/7/24
Act. BW: 78 Adj. WW: 806

EPDs																
CE	BW	WW	YW	ADG	MCE	MM	MWW	STAY	DOC	CWT	YG	MARB	BF	REA	API	TI
13	-.8	87	132	.28	6	27	70	17	11.3	3.8	-.33	.35	-.068	.78	155	93
Rank																
30	15	20	20	30		25	20	35				25			20	15

- ✓ Homo Black
- ✓ Homo Polled

Rubys Turnpike 771E
W/C Need4Speed 1016H
K-LER Dolly's Queen 609D
Hart State Of War 056C
Hart 078H
Hart Miss 136D

- **Recommended Heifer Bull**
- **Top 25% in 8 categories**
- **Dams Ratios - BW - 2@103, WW - 2@101, YW- 1@107**
- **Hart Equinox 129L, a Code Black son, selling to Randy Schmeling in 24' sale**
- **Hart Miss 227K, a Franchise daughter, selling to Bickel Brothers in 24'**

State Of War, a dominant calving ease specialist up in Canada and residing at McMillen Ranching LTD & Semex was the calving ease sire of everyone's dream. He was as right as rain with any female in our program. What you end up with was always the same- a calf with extended shape and depth that kept on developing into a rock solid performer. He had the masculinity to make bulls that carried tons of substance and females that were so ultra-feminine. We think this Need4Speed son fills State Of War's void and will eliminate those calving ease nightmares.



Hart Equinox 129L, Maternal Brother



Hart State Of War 056C, Grandsire



Hart 120M

Purebred SM ASA#4364574 Tattoo: 120M Birth: 3/8/24
Act. BW: 76 Adj. WW: 817

EPDs																
CE	BW	WW	YW	ADG	MCE	MM	MWW	STAY	DOC	CWT	YG	MARB	BF	REA	API	TI
16	-1.8	78	114	.22	10	30	69	18	7.1	3.0	-.20	.24	-.044	.56	152	86
Rank																
5	10				10	10	20	25							25	35

- ✓ Homo Black
- ✓ Homo Polled

Rubys Turnpike 771E
W/C Need4Speed 1016H
K-LER Dolly's Queen 609D
HSR Power Plus D206
Hart 051G
Hart Miss 114D

- **Top 25% in 7 categories**
- **Dams WW Ratio- 4@105**
- **Hart 080L, a Major Impact son, selling to Randy Schneling in 24' sale**
- **Hart 117K, a Trademark son, selling to Jacob Dewald in 23' sale**

Even though 120M has a tote board loaded with some top-notch calving ease and birthweight numbers, we just believe there is too much Power Plus influence in his data to be a 100% safe calving ease selection. We do however think that he has the potential to develop a nice group of feeders that can stack up the very best that he has to offer and achieve whatever goals you set for yourself.



Hart 080L, Maternal Brother



Hart 117K, Maternal Brother





Hart Formula 1 050M

Purebred SM ASA#4364507 Tattoo: 050M Birth: 2/26/24
Act. BW: 87 BW Ratio: 104 Adj. WW: 833 WW Ratio: 100

EPDs																		
CE	BW	WW	YW	ADG	MCE	MM	MWW	STAY	DOC	CWT	YG	MARB	BF	REA	API	TI		
10	1.2	79	120	.26	5	25	64	12	9.9	39.2	-.35	.00	-.055	1.04	115	76		
Rank																		
										20							20	



HART

Hart 106J, Maternal Brother



Rubys Turnpike 771E
W/C Need4Speed 1016H
K-LER Dolly's Queen 609D
SVF Z47 Patch

☒ **Homo Black**
☒ **Homo Polled**

Hart Miss 166D

RS&T Ms. Montecit 281A

- **Would not recommend for heifers due to the influence of Patch**
- **Dams Ratios - BW - 7@100, WW - 7@100**
- **Hart 106J, a State of War son, selling to Shultz Livestock in 22'**
- **4 Excellent reproductive females helping to impact our program**

If a person sits down and compares the herd sires we have brought into our baldy operation, it would make a very formidable list. Two of the heavy hitters well known for the chrome factory that put just the perfect amount dazzling white are under this pedigree. SVF Z47 Patch, stemming from Sunset View Farms and Hilbrands Cattle Co- he was very well known for his textbook ability of perfection and his sheer size and performance. AJE/PB Montecito 63W, a standout in the confirmation, presence department. You just knew that with the influence of one or both, you were going to come away with the absolutely gorgeous heifer or and bomb proof next herd sire! Formula 1 doesn't have any perfectly place chrome, but what he does have is the shocking combination of massive girth, length and extensive rib depth gifted to him by the two greats in his pedigree.



SONS OF Raml Right Now 2789

3/4 SM 1/4 AN ASA#4118193 Tattoo: 2789J Birth: 12/30/21
Act. BW: 82 Adj. WW: 786 WW Ratio: 103

EPDs																
CE	BW	WW	YW	ADG	MCE	MM	MWW	STAY	DOC	CWT	YG	MARB	BF	REA	API	TI
14	-.1	93	146	.33	8	20	67	14	13.8	37.7	-.31	.40	-.053	.92	142	92
Rank																
35		10	10	15	30		30		35	35	25		30	15		15

Mr SR 71 Right Now E1538 Hook's Bozeman 8B

Miss SR C1538

Raml Ms Combustible 789E W/C Lock Down 206Z

Raml Ms Combustible 576C

☒ **Homo Black**
☒ **Homo Polled**

Semen available at Hart Simmentals

His individuals are so remarkably similar in their build and design, they are stout made with extra center dimension. They portray an attractive look and pocket full of carcass potential. His 4 bulls in the sale are the kind that will go out and get the job done and increase your bottom line and that will never go out of style.



HART



Hart 170L, Maternal Brother



Hart 148M

Purebred SM ASA#4364602 Tattoo: 148M Birth: 3/12/24
Act. BW: 74 Adj. WW: 819

EPDs																
CE	BW	WW	YW	ADG	MCE	MM	MWW	STAY	DOC	CWT	YG	MARB	BF	REA	API	TI
14	.9	76	124	.30	8	24	62	17	11.0	36.9	-.26	.36	-.051	.78	151	85
Rank																
25			35	20	25			30		20		20			25	35

Raml Right Now 2789

Mr SR 71 Right Now E1538

Raml Ms Combustible 789E

Hart 416H

WAGR Fine Line 7052E

Hart Miss X086

☒ **Homo Black**
☒ **Homo Polled**

- **Top 25% in 6 categories**
- **Dams Ratios - WW - 3@101**
- **Hart 170L, a Need4Speed son, selling to Hanson Farms in 24'**
- **Hart 101K, a Maximum Security daughter, has a remarkable Solid Gold heifer in the replacement lot**

We almost could say that 145M and 148M are clones, they both have a maternal mother that calved at the same time and were both bull calves, both have a Solid Gold heifer in the replacement pen, not to mention they weaned 1 lb. apart and have the exact same birth weight. The only differences between them would be the sire on the dam side- can't speak enough about the quality of progeny they bring year after year. 148M's grand dam was a cornerstone IN TIME cow that helped build our platform with 9 calves born with a BW Ratio of 9@100 and WW Ratio of 8@102. That is some solid to the ground results that any cattle program could and should be proud of.



Hart Rush Hour 145M

3/4 SM 1/4 AN ASA#4364599 Tattoo: 145M Birth: 3/11/24
Act. BW: 74 Adj. WW: 818

EPDs																
CE	BW	WW	YW	ADG	MCE	MM	MWW	STAY	DOC	CWT	YG	MARB	BF	REA	API	TI
12	1.4	86	140	.34	6	26	70	15	14.8	37.6	-.37	.10	-.073	.94	121	79
Rank																
	20	15	10			30	20		25	35	15		10	15		

- ✓ Homo Black
- ✓ Homo Polled

Mr SR 71 Right Now E1538
Raml Right Now 2789
Raml Ms Combustible 789E
QB Last Frontier F42
Hart 157H
Hart Miss 135B

- Top 25% in 8 categories
- Dams Ratios - WW - 3@103
- Hart 171L, a Maximum Security son, selling to Ashlyn Zens in 24' sale
- Hart 061K, a Maximum Security daughter, has a barn burner Solid Gold heifer in our replacement pen.

Hart Rush Hour 145M is our only 3/4 blood bull in our 25' offering as RAML Right Now and Last Frontier are 3/4 blood herd sires. Rush Hour's robust depth and dimension certainly gets noticed the minute you set eyes on him. He has as much volume, mass and over all power that matches up with his functionality and can be used in any avenue out there. He has the potential to sire a set of males that mirror his excellence or a group of females that have that showstopping eye appeal, perfect udders with perfect teat size and placement which will have every neighbor wondering what you are up to (in the very best way)! He is a herd bull prospect that will give you the confidence and ease your worry about turning a profit, so buy in confidence!



Mr SR 71 Right Now E1538, Grandsire



Hart 156M

Purebred SM ASA#4364610 Tattoo: 156M Birth: 3/12/24
Act. BW: 76 Adj. WW: 841 WW Ratio: 101

EPDs																
CE	BW	WW	YW	ADG	MCE	MM	MWW	STAY	DOC	CWT	YG	MARB	BF	REA	API	TI
13	.5	81	126	.28	7	23	63	17	11.5	33.3	-.44	.25	-.091	.98	145	86
Rank																
35	35		30	30						30	30	35	15	30	30	30

- ✓ Homo Black
- ✓ Homo Polled

Mr SR 71 Right Now E1538
Raml Right Now 2789
Raml Ms Combustible 789E
Rubys Turnpike 771E
Hart 223G
Hart Emily 077A

- Top 35% in 11 categories
- Dams Ratios - BW - 4@103, WW - 3@102
- Hart 413J, and Franchise daughter, selling Eblen and sons in 22'
- Hart 281K, a Flash son, selling to Larson Farms in 23'
- Hart 249L, a Flash daughter that was put into production for ourselves

Hart Miss 223G is an embryo daughter of Ruby's Turnpike and our beloved Hart Emily 077A. When we were in our embryo years, Emily was our top producing donor with 17 son and daughters to grace our past sales and also working hard in our herd to bring the next generation of top notch progeny to keep her legacy going strong. Her most prolific year was the era of 156M's dam- all in the 2019. Hart Turnt'up 217G, Hart Upturn 249G, Hart Turnabout 255G, Hart Nocturnal 250G, Hart Turnpin 263G, Hart Nonreturnabull 340G, and Ima Headturner 249G. We believe with all of the rich Emily history potential, you may end up with an Emily for your program.



Rubys Turnpike 771E, Grandsire





Hart 240M

Purebred SM ASA#4364697 Tattoo: 240M Birth: 4/9/24
Act. BW: 75 BW Ratio: 94 Adj. WW: 840 WW Ratio: 101

EPDs																
CE	BW	WW	YW	ADG	MCE	MM	MWW	STAY	DOC	CWT	YG	MARB	BF	REA	API	TI
12	-2	89	134	.28	6	22	66	16	13.3	42.1	-.48	.01	-.077	1.31	133	85

Raml Right Now 2789

Mr SR 71 Right Now E1538



Homo Black

Hart 218J

Raml Ms Combustible 789E



Homo Polled

LHT Main Force 184G

Hart Miss 217D

• **Top 25% in 6 categories**

• **Dams Ratios - WW - 2@103**

• **Hart 272L, a Solid Gold son, selling to Pearson Ranch and weaned off at 867lbs.**

This is starting to look really good for this young Main Force dam, with 2 really solid bull calves under her belt that weaned off well over 800lbs. We had such an immensely successful run with State Of War and felt oh so blessed to still be getting phone calls from producers wanting to put his genetics into their program, but with semen almost impossible to get, there may be no chance to procure any. His daughters are as good as good can get and we are certainly keeping on eye on them to give another State Of War - one can only hope!

SONS OF Hart Code Black 034J

Purebred SM ASA#3896194 Tattoo: 034J Birth: 1/23/21
Act. BW: 74 Adj. WW: 806 WW Ratio: 101

EPDs																
CE	BW	WW	YW	ADG	MCE	MM	MWW	STAY	DOC	CWT	YG	MARB	BF	REA	API	TI
13	2.3	93	137	.28	8	24	71	12	11.9	51.2	-.43	.10	-.101	1.10	127	86

WHF Eclipse E35

TJ Main Event 503B



Hetero Black

Hart 046G

WHF Canda 35C



Homo Polled

DCR Mr Exclusive E28

Hart Miss 320E

Semen available at Hart Simmentals



With our semen reserves of WHF Eclipse E35 being low, that fueled our search to replace his fine genetics with an Eclipse son. What a better way to put an exclamation point on his stellar performance than an own son of his - Hart Code Black 034J. He is a son that we held back from being offered in our sale. We knew right off the magnitude of performance this young herd sire had from day one. His sons are designed with massive bone structure, impressive frame development, straight up solid four corner balance that helps aid them to carry all of their wonderful muscle mass. He truly is a herd sire with everything you are looking for.



Welsh's Warsaw 312Z, Grandsire



Hart Morse Code 109M

Purebred SM ASA#4364563 Tattoo: 109M Birth: 3/6/24
Act. BW: 80 Adj. WW: 825

EPDs																
CE	BW	WW	YW	ADG	MCE	MM	MWW	STAY	DOC	CWT	YG	MARB	BF	REA	API	TI
12	.6	77	103	.16	7	24	62	18	11.3	13.6	-.37	.35	-.086	.54	146	84

Hart Code Black 034J

WHF Eclipse E35



Homo Black

Hart Miss 248C

Hart 046G



Homo Polled

Welsh's Warsaw 312Z

Hart Miss 026A

• **Recommended Heifer Bull**

• **Hart 222H, a Power Plus son, selling to Michelle Jung in 21' sale**

• **Produced 4 highly maternal females to go back and work in our program**

• **Hart 097K- Is the dam of HART MONOPOLY 028M that is featured Solid Gold Son**

• **Hart 041L, a Solid Gold son, selling to George and Lisa Till in 24' sale**

The first of only two "Homo Black" Code Black sons that are in our 25' offering. Morse Code's dots and dashes all lined up perfectly on this big Code Black bruiser. He has an uncanny resemblance to Warsaw, rugged and had tons of bone and substance, power and design. Morse Code carries real world data and is backed by a very prolific dam that put a uniquely balanced genetic profile and it surely is the kind to take your program to the next level.



Hart Once You Go Black 113M

Purebred SM ASA#4364567 Tattoo: 113M Birth: 3/7/24
Act. BW: 80 Adj. WW: 801

EPDs																
CE	BW	WW	YW	ADG	MCE	MM	MWW	STAY	DOC	CWT	YG	MARB	BF	REA	API	TI
12	.9	81	115	.22	6	25	65	17	1.2	22.4	-.48	.19	-.109	.82	139	83
Rank						35	35	30			15		5			

Hart Code Black 034J

WHF Eclipse E35

☒ **Hetero Black**

Hart 046G

Hart 078G

Rubys Turnpike 771E

☒ **Homo Polled**

Hart Miss 492Z

- **Heifer Bull**
- **Dams Ratios - WW - 4@100**
- **Hart 185L, a Maximum Security daughter coming with her first Distinction baby here any day now**
- **Hart Holly 063K, a beautiful red Bourbon daughter selling to Emery Ranch in 23'**
- **Hart 117J, a Franchise son, selling to Allyn and Cory Reiser in 22'**

The undeniable facts are that this Turnpike female and the end product stays the same, no matter who your favorite herd bull happens to be at breeding time. That is an attribute every female in your program should have, is it always the case - No- but those are the ones we say goodbye to and hope they make a better marriage for the next person. Hart 113M is Hetro Black, but if you are in the market for a tip top herd sire prospect that may give you some blazes or even a red, then this is the fella for you.



Hart Holly 063K,
Maternal Sister



Hart 187M

Purebred SM ASA#4364644 Tattoo: 187M Birth: 3/18/24
Act. BW: 87 BW Ratio: 104 Adj. WW: 804

EPDs																
CE	BW	WW	YW	ADG	MCE	MM	MWW	STAY	DOC	CWT	YG	MARB	BF	REA	API	TI
10	2.4	88	132	.28	7	27	71	19	12.7	25.1	-.43	-.03	-.102	.74	129	80
Rank	20		20	30	35	20	15	15		35		5				

Hart Code Black 034J

WHF Eclipse E35

☒ **Homo Black**

Hart 046G

Hart Miss 217D

BBS True Justice B10

☒ **Homo Polled**

Hart Miss Mack T331

- **Top 35% in 9 categories**
- **Dams Ratios BW- 7@102 WW 7@106**
- **Hart 107L, a Flash son, sold to Cody Marshall in 24'**
- **Hart Turn Buckle 090G, a Turnpike son, sold to Steve and Julie Stoddard in 20'**
- **Hart Black Out 024F, a Mega Watts son, sold to Brian Watford in 22'**
- **And Hart 138H, and State of War daughter so to Robert Bosworth in 24'; And a Maximum Security son sold to Jacob Dewald**

You all know how we feel about our True Justice females, they are some of the very best females we have ever raised. The second of the two Homo Black sons out of four Code Black herd bull prospects, is so exciting- as these are the first Homo Black progeny that we have ever had out of Code Black. 187M is downright solid across the board with an excellent EPD profile and when you add that to his stately physis, you are blessed with an individual that weans over 800lbs. He has a really strong potential for a down and out game changer in your program.



Hart 107L, Maternal
Brother



Hart 159M

Purebred SM ASA#4364613 Tattoo: 159M Birth: 3/13/24
Act. BW: 78 Adj. WW: 801

EPDs																
CE	BW	WW	YW	ADG	MCE	MM	MWW	STAY	DOC	CWT	YG	MARB	BF	REA	API	TI
13	2.1	71	102	.19	7	25	61	13	9.3	14.6	-.44	.12	-.097	.68	123	74
Rank																
30					30	35					30		15			

Hart Code Black 034J

WHF Eclipse E35

☒ **Hetero Black**

Hart 046G

Hart Miss 092D

JF Made In America 210Z

☒ **Homo Polled**

Hart Lady Goldy W287

- **Dams Ratios - WW - 5@101, YW - 3@100**
- **Hart Secret Service 092L, a Maximum Security son, selling to Anderson Livestock in 24'**
- **Hart 163K, a Bourbon son, selling to Loren Johnson in 23'**
- **Hart 182G, and Utah son, selling to Olson Farms in 20'**
- **Hart 210H, and Custer daughter, had the very first babies of 22'- twin Eclipse heifers**

Hart Miss 092D is a perfectionist at her job and does what she does best, bring you a product that maximizes their outputs and convert easily and quickly. Her dam, Hart Lady Goldy W287 was a Gold Fingers/Crossfire female that was our absolute favorite Gold Fingers cow and brought 9 natural born calves for us before she left our pastures for the greenest pastures of all. That is what a phenomenal female should bring to the table and Hart Miss 092D, A Made In America daughter is following in her mother's footsteps and is leaving her own lasting legacy for our program.



Hart 163K, Maternal
Brother



SONS OF *WHF Epic G804*

Purebred SM ASA#3735234 Tattoo: G804 Birth: 10/8/19
Act. BW: N/A Adj. WW: 866 WW Ratio: 125

EPDs																
CE	BW	WW	YW	ADG	MCE	MM	MWW	STAY	DOC	CWT	YG	MARB	BF	REA	API	TI
10	2.5	84	127	.27	6	31	73	15	6.1	30.5	-.24	.42	-.033	.77	144	88
Rank																
30		30		35		5		10		15		35		25		

ES Epic EB94

CCR Cowboy Cut 5048Z

☒ **Homo Black**

WHF Miss Thing 804C

ES B94

LRS Turning Point 3117A

☒ **Homo Polled**

Prs Miss Thing U8035

Epic's performance is certainly legit and proves that he is the right kind of herd sire that is needed in this industry. His sons generate calves that tote moderate birth weights and explosive pre and post weaning weight. Their dense structure allows individuals to lay in an extra amount of muscle mass which tallies up to extra pay weight at the scales. He is such a compliment to any cow lineage and will push his potential in all avenues.

**Semen
available
at Hart
Simmentals**

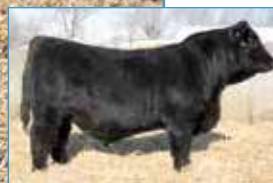


**LOT
61**

Hart 174M

Purebred SM ASA#4364628 Tattoo: 174M Birth: 3/15/24
Act. BW: 87 BW Ratio: 106 Adj. WW: 852 WW Ratio: 103

EPDs																
CE	BW	WW	YW	ADG	MCE	MM	MWW	STAY	DOC	CWT	YG	MARB	BF	REA	API	TI
10	2.8	78	122	.28	5	34	73	17	1.4	44.2	-.37	.23	-.069	1.06	135	81
Rank																
30		2		10		10		15		15						



ES Epic EB94

WHF Epic G804

WHF Miss Thing 804C ☒ **Homo Black**

QB Last Frontier F42 ☒ **Homo Polled**

Hart 206H

Hart Miss 050A

- **Top 2% for Milk**
- **Top 10% for MWW**
- **Top 10% for CW**
- **Top 20% for REA**
- **Dams Ratios - WW Ratio - 3@107**
- **Dam has produced 2 exceptional females for our program**

This is the first herd bull prospect for this 3rd year mamma. She is a Last Frontier female that really puts a solid start into her calves. Hart 174M carries a 2% for Milk production and we all know that is crucial to developing strong healthy calves that gain at a steady pace. Also, his 10% in CW only lends into that exceptional weaning weight that is hanging on his solid frame. We just love his unique intriguing look that has all of the right pieces and parts to produce a killer set of feeders or fancy heifers.

QB Last Frontier
F42, Grandsire



**LOT
62**

Hart 090M

Purebred SM ASA#4364544 Tattoo: 090M Birth: 3/4/24
Act. BW: 78 Adj. WW: 791

EPDs																
CE	BW	WW	YW	ADG	MCE	MM	MWW	STAY	DOC	CWT	YG	MARB	BF	REA	API	TI
14	1.6	71	108	.23	7	25	60	15	7.2	3.0	-.44	.25	-.068	1.11	136	78
Rank																
25		35		30		35		10								

WHF Epic G804

ES Epic EB94

☒ **Homo Black**

Hart Miss 347E

WHF Miss Thing 804C

Hart Merritt 155B

☒ **Homo Polled**

Hart Miss 041B

- **Dams 6th individual on display**
- **Dams has produced 3 prominent females**
- **Hart Dakota 019G, a Mr Exclusive son, sold to Jim Blahna in 20' sale**
- **Hart 172L, a Smokeshow daughter, sold to Josh Stentoft in 24'**
- **Hart 198K, a Gravity son, sold to Knecht Farms in 23'**

The accolades are all here for this Epic son to make a positive push for any breeder that is looking to push his program in the right direction. He has everything that is necessary to produce steers that will crush the scale down at weaning time or females that will one day be the cornerstone building block of any progressive cattle program.





Hart 207M

Purebred SM ASA#4364664 Tattoo: 207M Birth: 3/23/24
Act. BW: 87 BW Ratio: 106 Adj. WW: 821

EPDs																
CE	BW	WW	YW	ADG	MCE	MM	MWW	STAY	DOC	CWT	YG	MARB	BF	REA	API	TI
10	1.2	84	125	.26	7	29	71	17	1.9	27.5	-.29	.13	-.034	.86	135	82
Rank																
		30	35			15	15	30								

- ✓ Homo Black
- ✓ Homo Polled

ES Epic EB94
WHF Epic G804
WHF Miss Thing 804C
BBS True Justice B10
Hart 008H
Hart 019F

- Dams Ratios - BW - 3@101, WW - 2@103
- Hart Land Mine 155L, a Major Impact son selling to Cole Hokana in 24' sale

This True Justice 3rd year female has accomplished everything we have expected of her and we feel her potential is just coming into play. Semen on True Justice is still in demand which proves that his genetics transcends generations and in a span of 9 years since 2016 he has amassed well over 500 in progeny. His females are in a league of their own setting and breaking many of the breeds standards. We love seeing excellence in data and production coming full circle.



BBS True Justice B10, Grandsire



Hart 094M

Purebred SM ASA#4364548 Tattoo: 094M Birth: 3/5/24
Act. BW: 83 Adj. WW: 850 WW Ratio: 102

EPDs																
CE	BW	WW	YW	ADG	MCE	MM	MWW	STAY	DOC	CWT	YG	MARB	BF	REA	API	TI
9	2.3	86	133	.29	4	28	71	14	7.3	28.1	-.30	.08	-.053	.78	124	81
Rank																
		25	20	25		15	15									

WHF Epic G804 ES Epic EB94
Hart 019F WHF Miss Thing 804C
M4 Blackstone Z43B
Hart Miss 067D

- ✓ Homo Black
- ✓ Homo Polled

- Top 25% in 5 categories
- Dams Ratios - WW - 5@100, YW - 3@102
- Hart 252L, a Need4Speed son, sold to Clint Whetstone in 24' sale
- Hart 097J, a State Of War son, sold to B & B Simmental Cattle in 22'
- Hart Miss 008H, a True Justice female produced Hart Land Mine 155L that sold to Cole Hokana in 24' sale and has her own Epic son 207M in our 25' offering.

Hart 094M is a meat and potatoes bull that gets some serious kick from his Blackstone dam. We like our meat and potatoes to stick to your ribs- apparently so does this Epic son that tallied up an impressive 850lb. weaning weight around his ribs. My grandma would call that "darn good groceries"! Funny how that works- great genetics and a little food- best of everything.



Hart 252L, Maternal Brother



Hart 186M

Purebred SM ASA#(4364643) Tattoo: 186M Birth: 3/18/24
Act. BW: 83 BW Ratio: 100 Adj. WW: 801

EPDs																
CE	BW	WW	YW	ADG	MCE	MM	MWW	STAY	DOC	CWT	YG	MARB	BF	REA	API	TI
11	2.5	68	103	.22	6	29	63	14	7.0	41.1	-.31	.29	-.053	.97	130	75
Rank																
						10				15		30		30		

WHF Epic G804
Hart 337G

ES Epic EB94
WHF Miss Thing 804C
WAGR Fine Line 7052E
Hart Miss 400Z

- ✓ Homo Black
- ✓ Homo Polled

- Dams Ratios - BW - 4@105, WW - 4@100

It's time to put that outdated genetics out to pasture and let us hook you up with the very best we have to offer. This Epic son understood the assignment when he weaned one lb. over 800lb for weaning, that is what we all say in the business as "the right kind". Consistent breeding results is what we try to achieve every year and we get awfully close, so that is a win win in any book.





Hart 184M

Purebred SM ASA#4364641 Tattoo: 184M Birth: 3/17/24
Act. BW: 78 Adj. WW: 845 WW Ratio: 102

EPDs														
CE	BW	WW	YW	ADG	MCE	MM	MWW	STAY	DOC	CWT	YG	MARB	BF	REA
10	3.3	88	126	.24	6	29	73	13	1.9	4.1	-.33	.43	-.036	1.14
Rank														
20	30					10	10			15		15		10



Hart Larger Than Life 161L, Full Brother

ES Epic EB94

WHF Epic G804

WHF Miss Thing 804C

K-LER Franchise 804F

Hart 035H

Hart 023F

- ☒ Homo Black
- ☒ Homo Polled

- Top 30% in 8 categories
- Dams Ratios - BW - 3@99, WW - 3@105, YW - 1@107
- Hart Larger Than Life 161L, an Epic son, selling to Greg and Molly Heyne in 24' sale

This Franchise daughter puts on a school of how to get it done each year that she has been in production. Her first baby was a Franchise female that was so insanely fancy looking lady that would have given "Cheddar" a run for his money, but sadly she got hurt before she was due to calve with her Solid Gold baby- that one hurt! Her second was her Epic son Hart Larger Than Life 161L that Greg and Molly Heyne bought last year. Probably why we went right back with the same winning combination which gave us 184M and boy, he has been fun watching develop! So, take your program up a level with this latest achievement from Epic and get him into your lineup.



Hart 189M

Purebred SM ASA#4364646 Tattoo: 189M Birth: 3/18/24
Act. BW: 83 BW Ratio: 99 Adj. WW: 829 WW Ratio: 100

EPDs														
CE	BW	WW	YW	ADG	MCE	MM	MWW	STAY	DOC	CWT	YG	MARB	BF	REA
9	1.4	74	105	.19	5	27	64	19	6.4	3.7	-.25	.37	-.039	.74
Rank														
						25		15				20		35



ES Epic EB94

WHF Epic G804

WHF Miss Thing 804C

Welsh's Warsaw 312Z

Hart Miss 040C

Hart Miss 119A

- ☒ Homo Black
- ☒ Homo Polled

- Dams Ratios - BW - 8@102, WW - 8@102
- Hart Buttercup 191K, an Epic daughter, sold to Robert Bosworth in 23'
- Hart 311J, a Gunslinger son, sold to B & B Simmental cattle in 22'
- Hart Miss Kyra 322H, a Power Plus daughter selling to Ronald Thoreson in 21'
- Hart Big Chief 216G, a Fine Line son, selling to Jaden Sabot in 21"
- Hart 345F, a True Justice son, selling to Larson Livestock in 20'
- Hart Miss 013E, a True Justice daughter-produced Hart 223K who was a Flash son selling to Dean Seifer in 21'

Dominance is the word you would see if you looked up Hart Miss 040C up in the dictionary, she is as top notch of a producing machine as one can get. She has brought bulls that up the ante every year and females that are good enough to go into any donor program. The proof of her superiority is listed right above and that speaks volumes when the list just keeps going and going. Just put a stamp on this Epic son to go straight to work and help you boost your program to the next level.



Hart 311J, Maternal Brother



Hart Buttercup 191K, Maternal Sister





Hart 175M

Purebred SM ASA#4364629 Tattoo: 175M Birth: 3/16/24
Act. BW: 90 BW Ratio: 108 Adj. WW: 846 WW Ratio: 102

EPDs																
CE	BW	WW	YW	ADG	MCE	MM	MWW	STAY	DOC	CWT	YG	MARB	BF	REA	API	TI
11	2.8	83	121	.24	6	28	70	15	1.6	31.7	-.50	.07	-.094	1.10	125	80
Rank		30				15	20			35	10		15	15		

- ☒ **Homo Black**
- ☒ **Homo Polled**

WHF Epic G804 ES Epic EB94
 WHF Miss Thing 804C
 Hart Miss 175D SVF Z47 Patch
 Hart Gold Mine Lass W566

- **Top 30 % in 7 categories**
- **Extra-large testicular development**
- **Dams Ratios - BW - 6@102, WW - 6@105**
- **Hart 195L, a Main Force heifer, sold to Josh Stentoft in 24'**
- **Hart 044K, a Candy Man daughter has Hart Golden Ticket 011H, a Solid Gold son in our 25' offering**

A superb prime example of why Epic's sons and daughters are so highly sought after. 175M is big backed, big butted and carries his muscle mass all the way down into his stifle. Epic has brought so many potent individuals that portray all of his dimension, and we are sure this guy gets and extra shot due to the influence of Patch on the dam side. There is nothing moderate about this monster and he sure has that herd bull look about him already!



SVF Z47 Patch, Grandsire



Hart 151M

Purebred SM ASA#4364605 Tattoo: 151M Birth: 3/12/24
Act. BW: 76 Adj. WW: 830 WW Ratio: 100

EPDs																	
CE	BW	WW	YW	ADG	MCE	MM	MWW	STAY	DOC	CWT	YG	MARB	BF	REA	API	TI	
12	2.2	79	112	.21	7	25	64	15	7.9	27.7	-.44	.16	-.085	.94	129	79	
Rank					35					30					30		35

WHF Epic G804 ES Epic EB94
 WHF Miss Thing 804C
 Hart Miss 139E SVF Z47 Patch
 Hart Unique Lass T099

- ☒ **Black**
- ☒ **Homo Polled**

Hart 151M is a deep sided soggy bull calf that puts a push pin in the extra length department. He is a loose hided Epic son that continually kept changing in the very best of ways. As a Patch descendant, one would expect nothing less.



Hart 233M

Purebred SM ASA#4364690 Tattoo: 233M Birth: 4/2/24
Act. BW: 76 Adj. WW: 794

EPDs																
CE	BW	WW	YW	ADG	MCE	MM	MWW	STAY	DOC	CWT	YG	MARB	BF	REA	API	TI
13	.6	74	112	.24	7	29	66	22	1.0	22.4	-.21	.36	-.041	.51	156	83
Rank					35	15	35	3				20	20			
30																

WHF Epic G804 ES Epic EB94
 WHF Miss Thing 804C
 Hart Miss 222E DKSR Hollow Point C66
 Hart Miss X375

- ☒ **Homo Black**
- ☒ **Homo Polled**

First Bull calf for this Hollow Point dam that has previously given us 5 superior females. We have a handful of these highly maternal mothers who's genetics are so solid. We need these kind of females to keep the foundation strong. 223M is as put together as one can make and will deliver just like his dam.





Creating our own Hollywood Legacy

50 years of bull sales allows a person to meet a host of friends and get to witness so many pivotal events. Let us take a journey back through time to the Golden Age of Hollywood. When A-Listers were revered, idolized, and classified as iconic and timeless. Names like Hepburn, Monroe, Kelly, Bacall, Davis have become synonymous with fame and fortune and of course, leading ladies. Now, our own Hollywood legacy reads a tiny bit different than the prominent screen queens listed above. Our Hollywood story started in 1995 when a certain Black Max son hit the ground on April 8th. Everyone calved a little later as barn room to get cows in was on a much smaller scale. Boy, was he a cocky showoff! A natural born poser who would do whatever he could to make sure we saw him every time we went into the calving pasture. I remember that day all too well when this certain baby came. It was the worst April blizzard we had ever had! Kerry and I lived in the calving pasture for 2 days. We had a full hay rack in the pasture up by the gate because we couldn't get around much with the pickup. The second a baby hit the ground we were out and throwing the baby up in the rack so it wouldn't get crushed and frozen. We had no electricity for four days and we thankfully had a tractor generator that we could at least have some heat in Charlie and Ruth's house (we all stayed with them until power was restored). As the spring and summer days came and went, this Black Max son was on his mama's udder nonstop, and he developed into a real showstopper. Fast forward to 1996 and the National Western Stock Show when Hart Hollywood E707 came off the trailer and stepped into the history books and became the highest selling Simmental bull of all time. The legendary Triple C Simmentals of Emerald Wisconsin and Mr. Peter Courtney became the honored purchaser when the gavel sounded. Then tragedy struck very very early the next morning after the sale and our pride and joy was found in his tieout pen- he had sadly passed. This was very devastating to so many breeders and of course Peter and Kerry. But just as sadly as this door closed, a window was opened and Hart Hollywood Queen E700 took Hollywood's place and history was made. She was the very first Simmental female to earn over \$1,000,000 in progeny. Kerry and I were fortunate to attend the sale in 2009 when Damar Farms purchased her from Triple C Farms, she was 14 years old and still looked like a three-year-old. Her last baby was born in March of 2013, cumulating 17 years of this legendary lady's lasting legacy. They both will hold a very special soft spot in our hearts! Kerry is together with them in the grandest cattle show there will ever be! And as they say... "The rest is history!"



Hart Madonna 103M

Purebred SM ASA#4364557 Tattoo: 103M Birth: 3/6/24
Act. BW: 78 Adj. WW: 722

EPDs															
CE	BW	WW	YW	ADG	MCE	MM	MWW	STAY	DOC	CWT	YG	MARB	BF	REA	API
12	.0	69	102	.21	5	28	63	18	7.7	12.7	-.34	.03	-.057	.66	128
Rank		30				15		25							



- ☒ Homo Black
- ☒ Homo Polled

Rubys Turnpike 771E
W/C Need4Speed 1016H
K-LER Dolly's Queen 609D
W/C Utah 534A
Hart Miss 154D
Hart Miss X736

- Dams Ratios - WW - 6@103
 - Hart Miss 154D's only bull calf, Hart 124F, sold to Phillip Currid in 19' sale and resides in Florida (lucky guy)
 - Madonna joins 4 other prominent females from this Utah dam
- Madonna gained critical acclaim and sometimes controversy as she became a cultural super star spanning decades thru the 70's and 80's. She wasn't afraid to cause a little commotion which always got noticed in one way or another. Our Madonna is ready to cause a lot of commotion with her oh so elegant and unique sassy star-studded fancy presence. This striking heifer will make many friends and we are super excited to see where her destiny lies for whomever brings her into their program.





Hart Marilyn 136M

Purebred SM ASA#4364590 Tattoo: 136M Birth: 3/10/24
Act. BW: 72 Adj. WW: 737

EPDs															
CE	BW	WW	YW	ADG	MCE	MM	MWW	STAY	DOC	CWT	YG	MARB	BF	REA	API
10	2.1	85	129	.27	5	21	63	15	8.7	32.1	-.51	.15	-.097	1.11	132
Rank															
	25	25	35							35	10		15	10	83

- ✓ Homo Black
- ✓ Homo Polled

Rubys Turnpike 771E
W/C Need4Speed 1016H
K-LER Dolly's Queen 609D
WS All-Around Z35
Hart Miss 164E
Hart Ms Royalflush U658

- Dams Ratios - BW - 6@95, WW - 6@97
- We bring you another highly maternal mother with this being her 5th female calf
- Hart 110L- is coming with her first distinction calf very soon
- Hart 209K has a superior Franchise heifer that is in our replacements
- Hart 029G, a MR Exclusive daughter that has had only females to date as well

Marilyn was famously synonymous with the word "Blonde Bombshell" and was the most popular sex symbol of the 50's and 60's- I say ever and a favorite actress of mine, I am a sucker for older movies. She was very well known for her sultry role in "The Seven Year Itch", and her iconic white dress scene over a train grate that made her dress fly up. Our Marilyn is an Ebony Bombshell, who won't be serenading any presidents, but will surely serenade some lucky guy and hopefully that union will produce the next big bombshell in the Simmental industry. You will stop dead in your tracks to analyze and study her feminine features and wonderful curves in all the right areas.



Hart Dolly 220M

Purebred SM ASA#4364677 Tattoo: 220M Birth: 3/29/24
Act. BW: 80 BW Ratio: 101 Adj. WW: 685

EPDs															
CE	BW	WW	YW	ADG	MCE	MM	MWW	STAY	DOC	CWT	YG	MARB	BF	REA	API
8	.9	78	121	.26	3	27	66	12	5.2	28.8	-.33	.02	-.051	.88	115
Rank															
						25	35								

- ✓ Homo Black
- ✓ Homo Polled

ES Epic EB94
WHF Epic G804
WHF Miss Thing 804C
Rubys Turnpike 771E
Hart 123G
Hart Miss 150D

- Dams Ratios - BW - 4@100
- Hart Starlet 174L, a Main Force daughter, selling to Traxinger Simmentals in 24' sale
- Dam has produced two other top-notch females working in our own program.

Everyone knows Dolly (if you don't, you may need to venture out a touch more). She has been a force to be reckoned with for her whole life! She kicks butt in everything she takes on. I do not know too many women who are 78 that have as much enthusiasm for life as she does. She also is very well known for certain attributes that can not be denied. Our Dolly is certainly a chip off the ole' block and is an incredibly special lady. She showcases an abundance in certain key areas that are also awfully hard to deny. Her Turnpike dam puts every ounce of her key components into her babies and is also an extremely maternal female with four females under her belt. This is the type of female any operation needs. There is nothing moderate or small about this girl. Her extreme length, vast amount of depth for days, and oh my- all that junk in the trunk cannot be denied. This lady right here is going to produce a dense made set of bulls that will start you off in the right direction.



Hart Starlet 174L, Maternal Sister





Hart Cher 049M

Purebred SM ASA#4364506 Tattoo: 049M Birth: 2/25/24
Act. BW: 85 BW Ratio: 106 Adj. WW: 745

EPDs																
CE	BW	WW	YW	ADG	MCE	MM	MWW	STAY	DOC	CWT	YG	MARB	BF	REA	API	TI
9	3.1	82	120	.23	6	32	73	22	1.2	2.5	-.24	.11	-.044	.55	136	78
Rank																
35						4			10		2					



Hart Lethal 025L, High selling bull that sold in our 2024 Bull Sale to Westway Farms

Cher was a cultural icon, spanning decades in the music industry. She had a stunning unique look, with her long jet black hair and sleek long silhouette. Just when you thought you had heard the last from her, she would reinvent herself and have another parade of #1 songs. Our Cher sports her own sleek long silhouette that showcases a stunning design. Cher's pedigree contains her own #1 history chart topper. Hart 106F, Cher's mother is the grand dam to Hart Lethal 025L, who was our high selling bull of our 24' sale. Our Cher will follow in her illustrious grand dam's and dam's footsteps and could just raise the next rising star in this industry.

- ☒ Homo Black
- ☒ Homo Polled

ES Epic EB94
WHF Epic G804
WHF Miss Thing 804C
WCS El Dorado 5209C
Hart 106F
Hart Ms Royalflush U527

- Dams Ratios - BW - 5@99, WW - 5@101
- Dam is an EL Dorado/Royal Flush female producing machine. 5 females in 5 year is almost never heard of, and these are all natural breeding's, not a donor program or sexed heifer semen. Her Flash daughter 115L- from last year sold to Bickel Brothers, Her Gravity daughter 096K will have a Solid Gold baby soon and her Most Wanted daughter 074J is the impeccable mother to Hart Lethal 025L who was our high selling bull in the 24' sale going to Westway Farms LTD in Canada, and Hart 011H, a Maximum Security daughter has a stupendous Solid Gold daughter in our replacements.



Hart Selena 141M

Purebred SM ASA#4364595 Tattoo: 141M Birth: 3/11/24
Act. BW: 78 Adj. WW: 745

EPDs																
CE	BW	WW	YW	ADG	MCE	MM	MWW	STAY	DOC	CWT	YG	MARB	BF	REA	API	TI
9	2.9	80	117	.23	6	25	65	16	8.4	27.4	-.42	.03	-.054	1.12	120	75
Rank																
35												10				



- ☒ Homo Black
- ☒ Homo Polled

LCDR Impact 134F
CDI Major Impact 280H
CDI Miss Rimrock 55E
HSR Power Plus D206
Hart 428H
Hart Miss 178D

- Dams Ratios - BW - 3@100, WW - 3@103
- Hart 263L, a Flash son, selling to Knecht farms in 24'
- Hart 075K, is a gorgeous Solid Gold heifer in our replacement pen

Selena was known for her exotic look and sultry style that made her an overnight sensation. Our Selena is also very exotic in her extra length and angular dimension. Power Plus on the dam side in an indicator that she could very well produce individuals that will contain maximum outputs. One can appreciate her next level appeal and correct arrow dynamic physique.



Hart Adele 167M

Purebred SM ASA#4364621 Tattoo: 167M Birth: 3/13/24
Act. BW: 78 Adj. WW: 724

EPDs																
CE	BW	WW	YW	ADG	MCE	MM	MWW	STAY	DOC	CWT	YG	MARB	BF	REA	API	TI
12	3.6	85	122	.23	6	20	62	15	11.4	35.0	-.48	.14	-.076	1.24	129	81
Rank	25								25		15	3				

- ✓ **Homo Black**
- ✓ **Homo Polled**

LCDR Impact 134F
CDI Major Impact 280H
CDI Miss Rimrock 55E
W/C Utah 534A
Hart 350F
Hart Miss 036B

- **Dams Ratios - BW - 5@97, WW - 5@97**
- **Hart 183L, an Epic son selling to Knecht Farms in 24' sale**
- **Hart 182K, a Gravity son, selling to Maurie Larsen in 23' sale**
- **Hart 026H, a Bro Dozer son, selling to Maurie Larsen in 21' sale (Maurie and Lynette Larsen love the genetics from this Utah female).**

This is the first female born out of this Utah mother who is known for her dominating powerful male counterparts that she has produced. Adele is best known for powerful voice and the ability to dominate in the powerful ballads she performs. Our Adele also gets all of her power from Major Impact and transforms that into a softness that one immediately sees, she is so stylish, refined and so effortlessly polished. Adele is a firecracker with her sparkling and tasteful physique. The daughters out of her are sure to be very sophisticated and if she gives you some bull calves - well then - LOOK OUT!



Hart Audrey 020M

Purebred SM ASA#4364478 Tattoo: 020M Birth: 2/10/24
Act. BW: 76 BW Ratio: 103 Adj. WW: 821 WW Ratio: 108

EPDs																
CE	BW	WW	YW	ADG	MCE	MM	MWW	STAY	DOC	CWT	YG	MARB	BF	REA	API	TI
8	1.4	100	139	.24	4	31	81	15	1.4	4.5	-.18	.42	-.026	.76	146	98
Rank		2	15			10	1			15		15			30	5

- ✓ **Homo Black**
- ✓ **Homo Polled**

TJ Gold 274G
ES Solid Gold JG157
ES G157
WHF Epic G804
Hart 059K
Hart Miss 010D

- **Top 15% in 7 categories**
- **Top 3% for WW**
- **Top 1% for MWW**
- **Dams Ratio - WW - 7@109**
- **Hart 188J, a Main Force son, sold to Sumption Farms in 22' sale**
- **Hart Quantum 067G, an Equalizer son, selling to Backer Land and Cattle in 20'**
- **Dam has also produced 4 stellar females working in our program- Hart 061L is coming with a Distinction calf anyday and Hart 183H has a superior Need4Speed bull in our 25' offering**

I am not sure if many men would get the reference Hepburn in "Breakfast at Tiffany's" or "My Fair Lady", but everyone should remember her iconic black dress in "Breakfast at Tiffany's", which she is famous for. Our Audrey also has and impeccable, stunning little black dress that accentuates her stately silhouette and her straight as an arrow design. Her elegant head and neck add to her uniqueness and will have you making circles in the pen coming around for more than one or two looks.





Hart Patsy 002M

1/2 SM 1/2 CS ASA#(4364460) Tattoo: 002M Birth: 1/20/24
Act. BW: 80 Adj. WW: 770

EPDs																
CE	BW	WW	YW	ADG	MCE	MM	MWW	STAY	DOC	CWT	YG	MARB	BF	REA	API	TI
9	2.7	106	161	.35	5	27	80	16	10.8	42.6	-.31	.47	-.05	.97	154	101
Rank																
	1	2	4			25	2			10		15			20	3



TJ Gold 274G
ES Solid Gold JG157
ES G157
W/C Need4Speed 1016H
Hart 129K
Hart 072G

☒ Homo Black
☒ Homo Polled

- Top 20% in 8 categories
- Top 1% for WW; Top 2% for YW and MWW; Top 4% for ADG; Top 3% for TI
- Out of a Need4Speed first calf heifer
- Grand dams Ratios- BW-3@1-4 WW-3@103 YW-1@103

Patsy Cline is regarded as one of the most influential vocalists of the 20th century and one of the first country music artists to cross over into pop music. She was quite different in her booming vocalization which was much richer and deeper due to rheumatic fever as a child. Our Patsy is regarded as having the deepest booming barreled mid-section of the entire open heifer group. This trait is what most seedstock breeders venture to say is the most important feature when it comes to making bulls with a commanding rib presence. We love her soft facial features and her extra fuzzy Simmental ears and is the kind of female that Kerry would have wanted 200 just like her. She has a top shelf set of EPD indexes and all of the right equipment to make this lady a leading legend soon one day.



Hart Meryl 205M

Purebred SM ASA#4364662 Tattoo: 205M Birth: 3/22/24
Act. BW: 83 BW Ratio: 103 Adj. WW: 728

EPDs																
CE	BW	WW	YW	ADG	MCE	MM	MWW	STAY	DOC	CWT	YG	MARB	BF	REA	API	TI
12	3.0	88	146	.36	7	22	66	20	12.6	51.2	-.27	.27	-.055	.93	151	87
Rank																
	20	10	3	35			35	10		3		35			25	30



Mr SR 71 Right Now E1538
Raml Right Now 2789
Raml Ms Combustible 789E
CDI Made Right 353B
Hart Miss 348D
Hart Miss 186Z

☒ Homo Black
☒ Homo Polled

- Top 25% in 6 categories
- Top 3% for ADG
- Top 3% for CW
- Dams Ratios - BW - 7@102, WW - 7@100, YW - 4@107
- Hart Wish Upon A Star 244L, a Major Impact daughter
- Hart 067K, also a Major Impact daughter
- Hart 225J, a Gravity daughter
- Hart 396G, a Belmont daughter
- Hart 410H, the only son out of 348D and Flash, sold to Scott Braun in 21' sale
- Hart 007F, a True Justice daughter

Meryl is very well known for her perfectionism, versatility and her ability to adapt to any direction her characters are portrayed. Every role she has played is a totally different persona-what an actress! Our Meryl has very strong ties to Meryl the actress, her CDI Made Right mother is the type of female that can adapt to any breeding choice there is out there and produce the type of individuals that can be used in any avenue and be a very versatile breeding component. If she were a guy we would call her "A Jack Of All Trades". Hart Meryl 205M is tremendously sound made and sits up on a superior four corner balanced skeleton, perfect udder and has every single piece she will need to produce a superstar for the ages-she is just a honey!

Purebred SM ASA#4364591 Tattoo: 137M Birth: 3/10/24
Act. BW: 78 Adj. WW: 784

EPDs																
CE	BW	WW	YW	ADG	MCE	MM	MWW	STAY	DOC	CWT	YG	MARB	BF	REA	API	TI
11	1.3	78	115	.23	6	31	70	14	13.0	32.1	-.32	.16	-.062	.81	128	80
Rank																
						10	20			35	35					

Hart Candy Man 470H
Hart Jaw Breaker 058K
Hart Miss 366D
DJF Trademark D634
Hart 156G
Hart Miss 289E

☒ **Homo Black**
☒ **Homo Polled**

- **Dams Ratios - WW - 3@101**
- **Hart 186L, an Epic son selling privately in 24'**
- **Hart 023K, a twin Candyman son, selling to Maurie Larsen in 23'**
- **Hart 024K, the other Candyman twin, selling to Bickel Brother in 23'**
- **Hart 067J, a Power Plus son, selling to Scott Braun in 22'**

Four sons in 3 years and now Hart Miss 156G throws her hand into the female side of the pool. Bette Davis was very well known for have a no-nonsense persona about her and always portrayed very strong, secure and forceful women. Our Bette carries on that same secure confidence with her bold and dynamic makeup and design. Let's talk about that gorgeous makeup- we just love her sort of diamond shaped star, depending on what way you're looking at it. She just screams class and charisma and captivates your attention from every angle that a female can emulate.



Hart Family named Farm Family of the Year

Every year the Farm Forum presents the Farm Family of the Year award at the Aberdeen Area Chamber of Commerce Ag Appreciation Banquet. The purpose of the award is to recognize a family who best represents farming and ranching and the spirit of agriculture in northeastern South Dakota. To be eligible, the recipients must be actively engaged in farming or ranching, with the majority of income derived from production agriculture.

Our 2017 Farm Family of the Year is the Kerry and Mara Hart family from Frederick.

The Harts began their farming operation in the 1950s as a farming and ranching operation named Hart Farms. The majority of the land was owned and operated by Kerry's father, who farmed through the 1970s. There were seven children in the family, and two of the boys stayed to help at the farm, including Kerry. The Harts had their first bull sale in 1974, selling registered Black Angus and Simmental bulls. After Kerry's father had a life-threatening stroke, Kerry and his brother took over the farm, raising wheat, beans, alfalfa, oats and corn. They also continued ranching, taking cattle to shows all over the U.S., including

Frederick cows receive many ASA Cow Awards

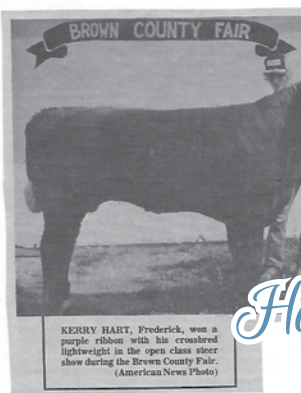
Recently, Simmental cows from the herd of Charles Hart & Sons, Frederick, received 6 Excellent, 3 Superior and 3 Elite Awards. The American Simmental Association maintains a Cow Award Program designed to recognize outstanding Simmental and Simbrah females. Charles Hart & Sons joined the Association in 1975.

The Awards are based on data gathered through ASA's extensive performance testing programs using the cow's lifetime "Most Probable Producing Ability" (MPPA). This formula evaluates the animals within-herd performance as shown by the weaning weights of her calves, compared to the herd average, and projects her probable future production.

To qualify for an ASA Cow Award, a cow must produce outstanding calves at regular intervals. "Excellent" awards are based on two consecutive calves; "Superior" awards result from four consecutive progeny; and an "Elite" cow must produce six consecutive qualifying calves.

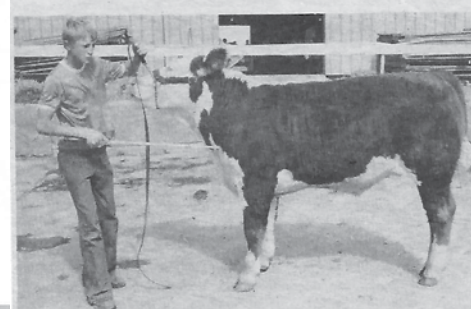
Other criteria requires that

poraries. The American Simmental Association was the first American Beef Breed Association to recognize performance of genetically outstanding females with national productivity awards. Not only do the owner and breeder of award winning cows receive recognition but the award designation is carried on subsequent registration certificates and other reports.



KERRY HART, Frederick, won a purple ribbon with his crossbred lightweight in the open class steer show during the Brown County Fair. (American News Photo)

win at fair



beef at the sale was owned by Teresa Schile, Weonka, which sold for \$70 per hundredweight to Bob Kessler of Aberdeen. A total for 120 cattle were sold for \$27,647.89. There were 164 sheep sold at the sale for a total of \$7,740.10. The high

NEWS
CLIPPINGS
THROUGH
THE YEARS!

Hart=Worthy
News!

Frederick area Simmental cow herd honored

Bozeman, Mont.- Recently, 12 cows from the Simmental herd of Charles Hart and Sons, Frederick, qualified for 1998 National Cow Performance Awards from the American Simmental Association (ASA). These award winning cows were listed in the special Cow Summary (May) issue of the REGISTER, ASA's official publication.

The Cow Award Program was established in 1976 to recognize consistently outstanding females of the breed, based on the animal's individual production records. During the past year, a total of 2,348 cows earned this prestigious honor.

Cows qualify in one of three categories: Excellent for producing two consecutive outstanding calves; Superior, (four consecutive outstanding calves); and Elite, (six consecutive outstanding calves).

Charles Hart and Sons, an ASA member since 1975, received eight Excellent Awards, two Superior Awards, and two Elite Awards. ASA is an organization of more than 12,000 cattle breeders nationwide and maintains herd registries for the Simmental and Simbrah breeds of cattle.

the Denver Stock Show, where they earned many awards.

Kerry, along with his wife Mara, have kept the farm alive and have the honor of working with the third generation — their two sons, Justin and Travis. Although rheumatoid arthritis limits what Kerry can do, he is as active as possible to keep the boys in line. Today, they farm oats, alfalfa, soybeans and corn along with raising an incredible herd of Black Simmental cattle. Their operation's name is now Hart Simmentals, and

2017 marking their 42nd annual bull sale. In addition, the 4th generation Hart boy was welcomed into the family last year.

The Hart family loves to be involved in the community, attending the premium sale at the Brown County Fair each year and purchasing a premium to help out a 4-Her. In addition, Travis is an active member of the Frederick Volunteer Firefighters and First Responders. The family also supports Frederick Forward and the local chapter of the Pink Ladies cancer group.



KERRY HART Frederick, South Dakota, is at the halfter of his grand champion Angus heifer of the Central States Fair in Rapid City, South Dakota. She's intermediate division winner Lady Winton C99624. Willard Wilson, Thermopolis, Wyoming, judge the 37 bulls and 33 females shown.—Photo by American Angus Association.

Stockyards Wednesday, Jan. 18, 1995. Rick Karjalainen, also of Frederick, helps out with the job at the National Fair which is one of the premier livestock exhibitions staged in the United States. RP Photo/David Zinkow CREDIT RP LEAFDESK

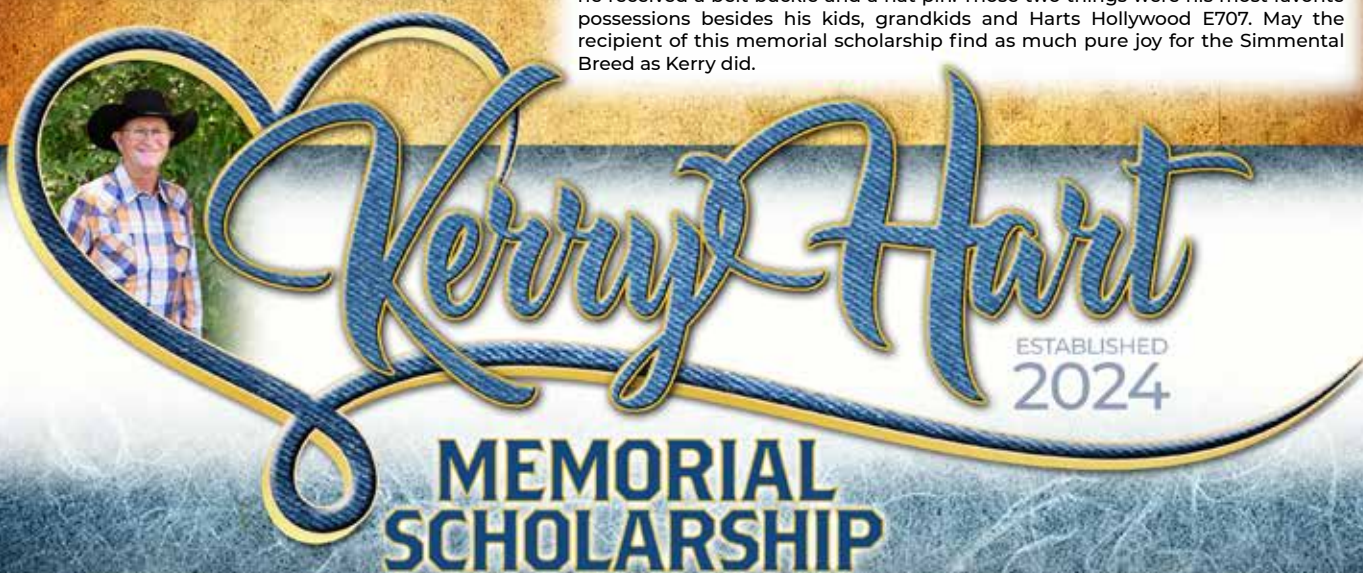




*We wish to congratulate
Jordyn Falkenstine*

**Jordyn is the first recipient of the
KERRY HART MEMORIAL SCHOLARSHIP!**

Kerry was a born cattle man, with Final Bloom in his veins! His passion for Simmental cattle was an obsession (a very good obsession). He had 4 favorite times of the year – not birthdays or anniversaries here! They were the day the first baby calf hit the ground; Denver Stock Shows back in the 80's and 90's; our annual bull sale; and the first day the cows went to pasture! It didn't matter rain or shine, sleet or snow, sick or healthy... he ate and breathed Simmental cattle. When he won National Junior Grand Champion Showmanship at Wichita, Kansas, he received a belt buckle and a hat pin. Those two things were his most favorite possessions besides his kids, grandkids and Harts Hollywood E707. May the recipient of this memorial scholarship find as much pure joy for the Simmental Breed as Kerry did.



In memory of Kerry Hart, the Hart family would like to award one AJSA Member a chance at a scholarship for \$1,500 to any AJSA Member competing in a national level contest.

Submissions due by June 15, 2025

Send resume, two letters of recommendation and a photo to:

Hart Simmentals / Scholarship
10904 387th Avenue, Frederick, SD 57441
or email: 4hooves@nvc.net
Justin 605-216-6469 • Mara 605-380-8087

\$1,500
AJSA MEMBER

Thank you for your Support and Faith in our Breeding Program!

Westway Farms • Gary & Tracy Ulmer • Knecht Farms • Gaston Hornung • Grant Gilchrist • Phillip Currid • Manske Simmentals • McDonald Angus • Stacey Frericks • Greg & Molly Heyne • Marcus & Nicole Beck • Bohr Farms • Thyen Simmentals • Joshua Stentoft • Bryce Rohrbach • Ken Probst • Robert & Janet Bosworth • David Kolb • Brian Neilsen • Jerry Barton • Randy Schultz • Loren Johnson • Jeff Roehr • Jordan & Heather Mehlhaff • Rick & Lisa Rau • Scott Braun • Badger & Terry Koepplin • Traxinger Simmentals • Amber De Rouchey • Harvey & Clayton Henningson • Cole Hokana • Ashton Hokana • Braxton Hokana • Clint Whetstine • Greg Zimbelman • Noah Dickson • Steve & Cathy Eichacker • Matt Domine • Jade Friesz • Dean & Sherry Seifer • Dwight Althoff • Randy Schneling • Cory Reiser • Dale Pitzel • Mike Gorder • Kari Buchholz • Jay Myers • Justin Helland • Jimmy Seiler

Please Join Us Sale Day!

WEDNESDAY, FEBRUARY 19, 2025 SALE TIME 1:00 PM

Sale will be held at the farm 2 miles south of Frederick, SD
VIDEO SALE ONLY - bulls will be penned for viewing
at the farm prior to and on sale day!

ONE OF THE COUNTRY'S LARGEST SELECTIONS OF PUREBRED BULLS!
100% OF OFFERING IS HOMOZYGOUS POLLED!

Selling 70 PB SM Herd Bull Prospects
*Complete performance data & 50K testing
on all bulls offered in the 2025 sale.*
+ 10 Elite Open Heifers

Sale Day Phones:

Justin 605-216-6469 • Val 612-805-7405

SCHEDULE:

Tuesday, February 18th Viewing of Sale Cattle at the Farm
Farm address: 10904 387th Avenue, Frederick, SD 57441

Wednesday, February 19th

8:00 a.m. Viewing of Cattle
11:00 a.m. Complimentary Lunch
1:00 PM. **50th Annual Hart Simmentals Power Bull Sale**

AIR TRANSPORTATION: Delta Airlines serves Aberdeen from all directions.
Please contact Hart Simmentals prior to sale day for assistance with transportation.

AREA MOTELS: Aberdeen, S.D. has several excellent motels

Ramkota Inn, Sale Headquarters 605-229-4040
Hampton Inn, Aberdeen SD 605-262-2600
Holiday Inn Express & Suites 605-725-4000
Harvest Inn, Ellendale, ND (12 miles north of ranch) 701-349-2467

LIVESTOCK PRESS REPRESENTATIVES & MARKETING REPRESENTATIVES:

Val Eberspacher, EE Sales 612-805-7405
Tony Heins, Western Ag Reporter 701-400-4435
Austin Brandt, Lee AgriMedia 712-621-1829
Justin Dikoff, DV Auction 605-290-0635

AUCTIONEER:

Col. Dustin Carter 712-898-9972

FREE DELIVERY ANYWHERE ON ALL BULLS PURCHASED OVER \$5,000!

Delivery starting February 27th. Or, we can keep the bulls until April 30 and the buyer
will be responsible for pick up. \$50 off per head if you haul your bull sale day.

This sale will be
broadcast live
on the internet! **DVAuction**
Broadcasting Real-Time Auctions

For more information on online bidding,
Justin Dikoff 605-290-0635

★ **HART SIMMENTALS** ★
MARA, JUSTIN & JAMIE HART
4hooves@nvc.net
JUSTIN 605-216-6469



General Information

Health: We at Hart Simmental have a complete herd health program which is managed by Dr. Tim Kruse and the Wetonka Vet Clinic. All bulls will be accompanied by health papers for shipment anywhere in the United States. They have been vaccinated for Rednose, P13, BVD, 7-way clostridial, Blackleg, BRSV, Haemophilus, and have had their booster shot at weaning. They have also been dewormed with Safeguard and poured with Ivomec. Dams of all bulls have been tested Johnes free.

Genetic Defects: All bulls selling are Arthrogryposis Multiplex (AM) Free, Neuropathic Hydrocephalus (NH) Free, and Contractural Arachnodyctyly (CA) Free.

Delivery: FREE DELIVERY anywhere on bulls purchased over \$5,000. We will start delivery February 27 or we can keep the bulls until April 30. Any bull left here until April 30 must be picked up by the purchaser by that date. No exceptions. \$50 off per head if you haul your bull sale day.

Performance Information: All performance information will be posted on sale day for your inspection. Yearling Weights and Weight Per Day of Age will be available on all bulls selling sale day, and will be posted on the internet sale site as soon as complete.

Volume Discount: There will be a volume discount given if you purchase 3 bulls, the discount will be 3%. 4 bulls will have a 4% discount and 5 or more bulls will be a 5% discount.

Livestock Insurance: Insurance will be available sale day through Martin-Trudeau Insurance who offers loss of use and mortality, Amy Puepke 605-996-3106 or 800-450-3106. In no case will seller be responsible for more than the purchase price of the bull and details will be available through the agents on sale day. **If you intend on leaving your bulls at the ranch we highly recommend you insure your bull or bulls to better protect your investment.**

EPDs: Please note the EPDs may change from the time the sale catalog is printed until registration paper is transferred. Simmental EPDs are BOLT 1/8/25 numbers.

All bulls have been tested for Genomic Enhanced EPDs.

Announcements: Announcements made sale day and from the auction block during the sale take precedence over printed material in the catalog or other printed material associated with this sale.

Sale Terms & Conditions:

- 1) All cattle will sell under the terms and conditions adopted by the American Simmental Association.
- 2) We guarantee our cattle to be breeders but reserve the right to test any animal that may be returned to us as a non-breeder for one hundred eighty (180) days before making an adjustment. Cattle will be returned at the buyer's expense, and if declared a sound breeder by a competent veterinarian the cattle will be returned to the buyer's ranch at the buyer's expense. In case an adjustment is required, we will provide you with a satisfactory replacement (if available) or issue you a credit equal to the bull's purchase price minus the salvage value of \$1,000.
- 3) Any death or injury after the animal is sold is at the buyer's risk.
- 4) Anyone attending this sale attends at their own risk. The Hart's or any of the sale force will not be held responsible for any personal injury while attending this sale.

Eberspacher
ENTERPRISES INC.

Val & Lori Eberspacher
Office 507-532-6694
Cell 612-805-7405
sales@ebersale.com

Follow our Facebook page for sale updates!



Eberspacher Ent. Inc.

2904 County Road 6
Marshall, MN 56258

FIRST CLASS
MAIL
U.S. POSTAGE
PAID
MN MAIL

First Class Mail: Time Dated Material!

HART 
SIMMENTALS



50th Anniversary

POWER BULL SALE

Wednesday, February 19, 2025

1:00 PM AT THE FARM 2 MILES SOUTH OF FREDERICK, SD